

## PERFORMANCE

### Processor<sup>[1]</sup>

Intel® Core™ i9-13900H, 14C (6P + 8E) / 20T, P-core up to 5.4GHz, E-core up to 4.1GHz, 24MB

### Graphics

Integrated Intel® Iris® Xe Graphics

### Chipset

Intel® SoC Platform

### Memory

16GB Soldered LPDDR5-5600

### Memory Slots

Memory soldered to systemboard, no slots, dual-channel

### Max Memory<sup>[2]</sup>

- 16GB soldered memory, not upgradable
- 32GB soldered memory, not upgradable

### Storage

1TB SSD M.2 2280 PCIe® 4.0x4 NVMe®

### Storage Support<sup>[3]</sup>

One drive, up to 1TB M.2 SSD

### Card Reader

None

### Optical

None

### Audio Chip

High Definition (HD) Audio

### Speakers

2Wx2 tweeter + 5Wx2 woofer, harman/kardon

### Camera

5.0MP + IR

### Microphone

2x, Array

### Power Supply

170W 89% Adapter

## DESIGN

### Display<sup>[4]</sup>

31.5" UHD (3840x2160) IPS 495nits, 97% DCI-P3, 3-side Borderless, DisplayHDR™ 600

### Touchscreen

Non-touch

### Keyboard

Ultraslim Wireless Keyboard, Grey, French

### Mouse

Ultraslim Wireless Mouse, Grey

### Expansion Slots

Two M.2 slots (one for WLAN, one for SSD)

### Case Color

Storm Grey

### Stand

Monitor Stand

### Wireless Charger

Wireless Charger

### Pen

No support

### Form Factor

AIO (31.5 inches)

### Dimensions (WxDxH)<sup>[5]</sup>

724.04 x 253.02 x 543.1 mm (28.5 x 9.96 x 21.38 inches)

### Weight<sup>[6]</sup>

Around 8.5 kg (18.74 lbs)

## CONNECTIVITY

### WLAN + Bluetooth®

Wi-Fi® 6E, 11ax 2x2 + BT5.3

### Rear Ports

- 1x USB-C® 3.2 Gen 2 (support data transfer, DisplayPort™ 1.4, up to 95W)
- 1x USB4® 20Gbps (support data transfer, and DisplayPort™ 1.4)
- 2x USB 3.2 Gen 2
- 1x HDMI® 2.1 TMDS
- 1x headphone / microphone combo jack (3.5mm)
- 1x power connector

## SECURITY & PRIVACY

### Security Chip

Firmware TPM 2.0 integrated in processor

## SERVICE

### Base Warranty

2-year, Courier or Carry-in

### Included Upgrade

CO2 Offset 1 ton (2nd Generation Carbon Offset Projects)

## CERTIFICATIONS

### Green Certifications

- ErP Lot 3 and Lot 7
- GREENGUARD®
- RoHS compliant

### Other Certifications

- TÜV Rheinland® Flicker Free
- TÜV Rheinland® Low Blue Light

## SOFTWARE

### Operating System

Windows® 11 Home, French

### Bundled Software

None

## ACCESSORIES

### Bundled Accessories

None

## MODEL

**Product** : YOGA AIO 9 32IRH8

**TopSeller** : No

**Announce Date** : 2024-03-11

**EAN / UPC / JAN** : 198153498789

**End of Support** : 2029-05-19



Product image is a sample, it may not match the real color of this model  
Note:

<sup>[1]</sup> Intel Max Turbo frequency will vary depending on application workload and the hardware and software configurations, see <http://www.intel.com/technology/turboboost/> for more information.

<sup>[2]</sup> The max memory is based on the test results with current Lenovo memory offerings.

<sup>[3]</sup> The max capacity of each disk type is based on the test results with current Lenovo storage offerings.

<sup>[4]</sup> IPS (in-plane switching) technology may refer to IPS, PLS, ADS, AHVA, AAS.

<sup>[5]</sup> The system dimensions may vary depending on configurations.

<sup>[6]</sup> The system weight is approximate and based on results in Lenovo lab, which varies depending on the source of component, variance of the distribution of each component, and manufacturing process. It may not be the exact weight for each specific model.

· Lenovo reserves the right to change specifications without notice.

To see more note information, please link to <https://psref.lenovo.com/Detail/2275?M=FOHJ003MFR>

## Premium Care - Advanced Support from Real People. Real Fast.



### REAL PERSON

Choose how you want to reach us - through the phone, chat or email - our expert technicians will take care of you.



### REAL FAST

Highly trained technicians will provide you real-time solutions, whatever the issue, on your first contact. If needed, our team will schedule an onsite visit for the next business day.



### HASSLE FREE

'Getting started' and 'how-to' assistance for hardware and software. Easy solutions that are simple to reach - that's how Premium Care delivers you the ideal support experience.



### PC HEALTH CHECK

Free annual PC Health Check that allows our experts to spot issues before you do so they can resolve them quickly and help you avoid PC problems.

## Accidental Damage Protection - Protection of your PC from the unexpected.

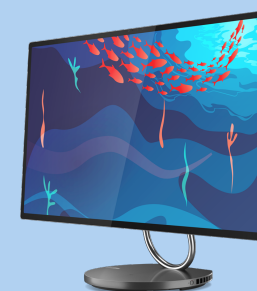
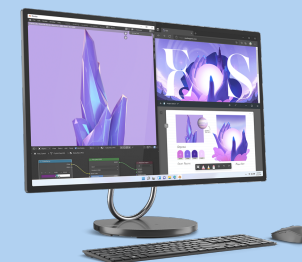
Experience shows that a significant portion of devices may be damaged (and not covered under warranty) in the first three years. Lenovo's Accidental Damage Protection service covers accidents beyond the system warranty such as drops, spills, bumps and even electrical surges. Make sure your new device has maximum protection, avoid unplanned costs and get peace of mind.

## Base Warranty – Included with the systems you purchase, default 1- or 3-year coverage window.

## Warranty Extensions & Upgrades – Service and protection that's right for your circumstances.

- Pick Up & Return Courier
- Onsite Support
- Technician Installed Customer
- Replaceable Unit Service
- International Warranty Upgrade

Lenovo may not offer the products, services or features discussed in this document in all regions. Lenovo may withdraw an offering at any time. Consult your local representative for information on offerings available in your area. Lenovo reserves the right to change specifications or other product information without notice. Lenovo is not responsible for photographic or typographical errors. Lenovo provides this publication "as is" without warranty of any kind, either express or implied, including the implied warranties of merchantability or fitness for a particular purpose.



**Lenovo**

**PSREF**  
Product Specifications  
Reference