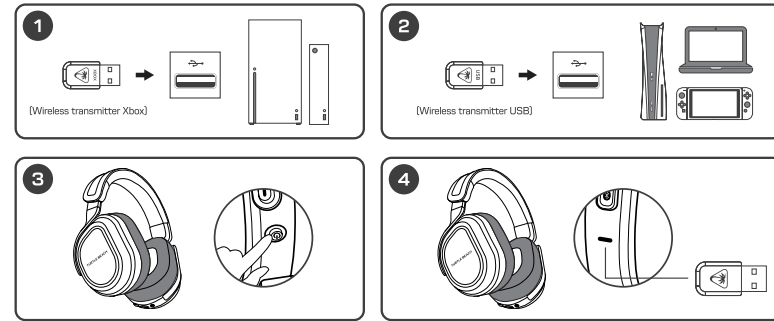


**SETUP FOR XBOX®**  
CONFIGURATION POUR XBOX®



**EN**

- Connect the wireless transmitter labeled "Xbox" to the USB port on Xbox.
- (Optional) Connect the second wireless transmitter labeled "USB" to the USB port on PlayStation®, PC or Nintendo Switch™.
- Power on headset.
- Wait for headset and USB wireless transmitter to pair.

**ES**

- Conecta el transmisor inalámbrico con la etiqueta „Xbox“ al puerto USB de la Xbox.
- (Opcional) Conecta el segundo transmisor inalámbrico con la etiqueta „USB“ al puerto USB de la PlayStation®, el PC o la Nintendo Switch™.
- Enciende los auriculares.
- Espera a que se emparejen los auriculares y el transmisor inalámbrico USB.

**JP**

- Xbox と表記されているワイヤレストランスミッターを Xbox の USB 端子に接続します。
- (オプション) USB と表記されている 2 個目のワイヤレストランスミッターを、PlayStation®、PC、Nintendo Switch™ の USB 端子に接続します。
- ヘッドセットの電源を入れます。
- ヘッドセットと USB ワイヤレストランスミッターがペアリングされるのを待ちます。

**FR**

- Connectez l'émetteur sans-fil identifié comme „Xbox“ au port USB de la Xbox.
- (optionnel) Connectez le deuxième émetteur sans-fil identifié „USB“ au port USB de la PlayStation®, du PC ou de la Nintendo Switch™.
- Alumuez le casque.
- Attendez que le casque et l'émetteur sans-fil USB s'appairent.

**DE**

- Verbinde den Funksender mit der Bezeichnung „Xbox“ mit dem USB-Anschluss der Xbox.
- (Optional) Verbinde den zweiten Funksender mit der Bezeichnung „USB“ mit dem USB-Anschluss von PlayStation®, PC oder Nintendo Switch™.
- Schalte das Headset ein.
- Warte auf die Kopplung von Headset und USB-Funksender.

**KO**

- Xbox의 USB 포트에 „Xbox“로 레이블이 지정된 무선 트랜스미터를 연결합니다.
- (옵션) PlayStation®, PC 또는 Nintendo Switch™의 USB 포트에 „USB“로 레이블이 지정된 두 번째 무선 트랜스미터를 연결합니다.
- 헤드셋 전원을 켭니다.
- 헤드셋과 USB 무선 트랜스미터가 페어링될 때까지 기다립니다.

**CROSSPLAY WIRELESS SYSTEM | SYSTÈME SANS-FIL CROSSPLAY**

The CrossPlay Wireless System allows you to wirelessly switch between two platforms by pressing the **CrossPlay Switch** button on the headset.

Le système sans-fil CrossPlay vous permet de passer sans fil d'une plateforme à l'autre en appuyant sur le bouton CrossPlay du casque.

Note: Both wireless transmitters must be connected and powered on to allow switching. Switching transmitters will not automatically power on the source platform.

Remarque : les deux émetteurs sans-fil doivent être connectés et sous tension pour permettre la commutation. Le fait de changer d'émetteur n'alumera pas automatiquement la plateforme source.

Transmitter Status   Statut de l'émetteur	LED Color   Couleur de la DEL
Paired [Active]   Appairé [actif]	Green   Vert
Paired [Stand-by]   Appairé [veille]	Amber   Orange
Mic is Muted   Micro désactivé	Red   Rouge

**To remove the ear pad and access the regulatory label: Pour changer les coussinets et accéder à la notice réglementaire :**

- Remove the left ear pad by pulling the ear pad straight up using your thumb.
- Once you've released the cloth from the lip on top, pull the ear pad straight back and it should slip right off.



**To replace the ear pad, follow the same process in reverse.**  
Pour remettre le coussinet en place, veuillez suivre la procédure inverse.

**Regulatory Compliance Statements for the STEALTH 700 GEN 3 (Wireless Gaming Headset – Headset Model: HWBBD006 & Dongle Model: HWAAD010)**

**Federal Communications Commission (FCC) Compliance Notices**  
**Class B Interference Statement**  
This equipment has been tested and found to comply with the limits for a Class B digital device, pursuant to Part 15, Subpart B of the FCC Rules. These limits are designed to provide reasonable protection against harmful interference in a residential installation. This equipment generates, uses, and can radiate radio frequency energy and, if not installed and used in accordance with the instructions, may cause harmful interference to radio communications. However, there is no guarantee that interference will not occur in a particular installation. If this equipment does cause harmful interference to radio or television reception, which can be determined by turning the equipment off and on, the user is encouraged to try to correct the interference by one or more of the following measures:

- Reorient or relocate the receiving antenna.
- Increase the separation between the equipment and receiver.
- Connect the equipment into an outlet on a circuit different from that to which the receiver is connected.
- Consult the dealer or an experienced radio/TV technician for help.

**FCC Caution:**  
This device complies with Part 15 of the FCC Rules. Operation is subject to the following two conditions: (1) This device may not cause harmful interference, and (2) this device must accept any interference received, including interference that may cause undesired operation. This product is compliant with the Consumer Product Safety Improvement Act of 2008, Public Law 110-314 (CPSIA).

**FCC RF Radiation Exposure Statement:**  
This equipment complies with FCC radiation exposure limits set forth for an uncontrolled environment. End users must follow the specific operating instructions for satisfying RF exposure compliance. This transmitter must not co-located or operating in conjunction with any other antenna or transmitter.

**CANADA-statement**  
This device complies with Innovation, Science and Economic Development Canada's licence-exempt RSS(s). Operation is subject to the following two conditions:  
(1) This device may not cause interference; and  
(2) This device must accept any interference, including interference that may cause undesired operation of the device.

Le présent appareil est conforme aux CNR d'Innovation, Sciences et Développement économique Canada exemptés de licence. L'exploitation est autorisée aux deux conditions suivantes:  
(1) L'appareil ne doit pas produire de brouillage;  
(2) L'utilisateur de l'appareil doit accepter tout brouillage radioélectrique subi, même si le brouillage est susceptible d'en compromettre le fonctionnement.

**Radiation Exposure Statement:**  
The product complies with Canada portable RF exposure limits set forth for an uncontrolled environment and are safe for intended operation as described in this manual. The further RF exposure reduction can be achieved if the product can be kept as far as possible from the user body or set the device to lower output power if such function is available.

Le produit est conforme aux limites d'exposition pour les appareils portables RF pour les États-Unis et le Canada établies pour un environnement non contrôlé. Le produit est sûr pour un fonctionnement tel que décrit dans ce manuel. La réduction aux limites d'exposition RF peut être augmentée si l'appareil peut être conservé aussi loin que possible du corps de l'utilisateur ou que le dispositif est réglé sur la puissance de sortie la plus faible si une telle fonction est disponible.

**Battery Caution:**

- Do not disassemble, impact, squeeze or throw into fire.
- Do not continue to use if aware swelling.
- Do not place in a high temperature environment;
- Do not use after the battery is flooded.
- Do not use any charger other than that specifically provided for use with the equipment;
- Dispose of used batteries according to the instructions.

For warranty information and service, please visit [www.turtlebeach.com/warranty](http://www.turtlebeach.com/warranty)  
**WARRANTY SERVICE FOR PURCHASES IN AUSTRALIA**  
Our goods come with guarantees that cannot be excluded under the Australian Consumer Law. For complete details please visit [www.turtlebeach.com/warranty](http://www.turtlebeach.com/warranty).

**European Union and European Fair Trade Association (EFTA) Regulatory Compliance**  
**Declaration of Conformity**  
Marking by this symbol:

Hereby, Voyetra Turtle Beach Inc. declares that **Stealth 700 Gen 3** Headset Model: HWBBD006 & Dongle Model: HWAAD010 is in compliance with Directive 2014/53/EU (EMC), 2014/53/EU (RED), 2014/26/EC (Safety), 2015/863 amending Annex II to 2011/65/EC (RoHS), 2011/65/EC (WEEE), 2006/100/EC (REACH), 94/62/EC (PACKAGING), 2006/66/EC (Batteries), Electromagnetic Compatibility Regulations 2016(EMC), Radio Equipment Regulations 2017(Radio), Electrical Equipment Regulations 2016(Safety), The Restriction of the Use of Certain Hazardous Substances in Electrical and Electronic Equipment Regulations 2012.

The full text of the EU/UK declaration of conformity is available at the following internet address: <http://www.turtlebeach.com/homologation>  
Radio frequency: 2400MHz  
Operating frequency: 2400-2483.5MHz  
Max. Output power: 4 dBm

This symbol on the product or its packaging indicates that this product must not be disposed of with your other household waste. Instead, it is your responsibility to dispose of your waste equipment by handing it over to a designated collection point for the recycling of waste electrical and electronic equipment. The separate collection and recycling of your waste equipment at the time of disposal will help conserve natural resources and ensure that it is recycled in a manner that protects human health and the environment. For more information about where you can drop off your waste for recycling, please contact your local authority, or where you purchased your product.

Turtle Beach Europe Ltd is obligated as a producer with a main activity of selling under the Producer Responsibility Obligations (Packaging Waste) Regulations 2007. To fulfill our obligation we are registered with Comply Direct and their Recycling Room. Here you will find advice and information on packaging waste management, recycling symbols and the waste hierarchy principles of reduce, reuse and recycle.  
<https://www.complydirect.com/the-recycling-room/> For instructions in other languages, please visit <http://www.turtlebeach.com/homologation>

Copyright © 2024, Voyetra Turtle Beach, Inc. All rights reserved. No part of this document may be reproduced without permission. Any product names mentioned in this manual may be trademarks or registered trademarks and are the property of their respective owners.

**Warning:** To prevent possible hearing damage, do not listen at high volume levels for long periods.

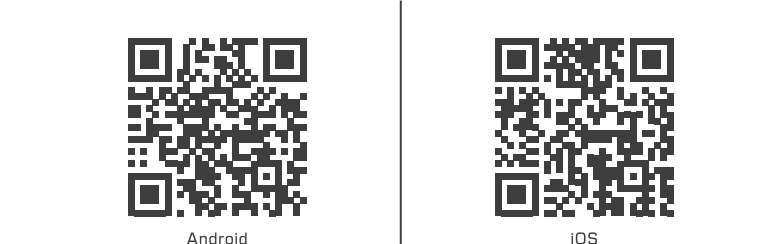
**Do not dispose of this product in the environment.**

この装置は、クラスB機器です。この装置は、住居環境で使用することを目的としていますが、この装置がラジオやテレビジョン受信機に近接して使用されると、受信機性能に悪影響を及ぼすことがあります。  
取扱説明書に従って正しい取り扱いをして下さい。  
VCCI-B

P/N: 426-255-005-500 RC

**IMPORTANT | IMPORTANT**

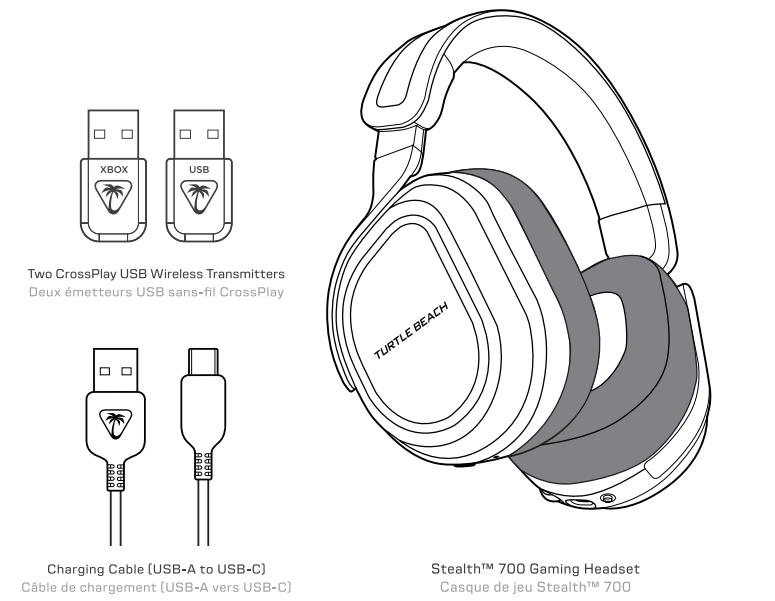
**PLEASE MAKE SURE YOUR HEADSET IS UPDATED WITH THE LATEST FIRMWARE.**  
VEUILLEZ VOUS ASSURER QUE VOTRE CASQUE DOPOSE DE LA DERNIÈRE VERSION DU MICROLOGICIEL.



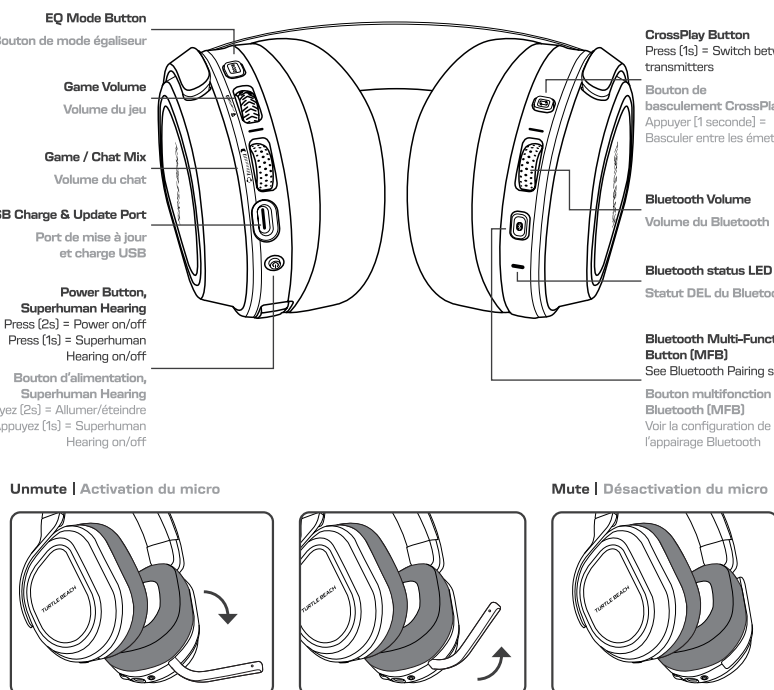
Download the Swarm™ II mobile app for Android or iOS to update your headset to the latest firmware and customize settings.  
Alternatively, you can use the Swarm™ II desktop software for Windows available at [turtlebeach.com/swarm2](http://turtlebeach.com/swarm2)

Téléchargez l'application mobile Swarm™ II pour Android ou iOS afin de mettre votre casque à jour avec la dernière version du micrologiciel et de personnaliser les paramètres.  
Vous pouvez également utiliser le logiciel Swarm™ II pour Windows, disponible sur [turtlebeach.com/swarm2](http://turtlebeach.com/swarm2)

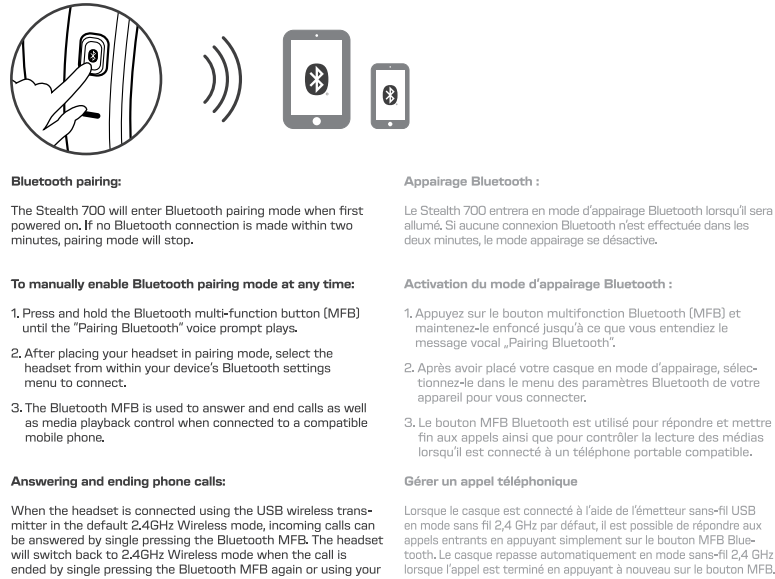
**PACKAGE CONTENTS | CONTENU**



**HEADSET CONTROLS | COMMANDES DU CASQUE**



**BLUETOOTH SETUP | CONFIGURATION BLUETOOTH**



**QUICK START GUIDE**  
**GUIDE DE DÉMARRAGE RAPIDE**

XBOX® VERSION

**IMPORTANT**  
**READ BEFORE USING**

**IMPORTANT**  
**LIRE AVANT UTILISATION**

STEALTH 700 GEN 3  
CERTIFICATION MODEL:  
HEADSET: HWBBD006  
DONGLE: HWAAD010

Any questions? Des questions?  
[www.turtlebeach.com/support](http://www.turtlebeach.com/support)

Please register your product to receive important updates.  
Enregistrez votre produit pour recevoir les mises à jour importantes.  
[www.turtlebeach.com/productregistration](http://www.turtlebeach.com/productregistration)

For warranty, visit:  
Concernant la garantie, visitez :  
[www.turtlebeach.com/warranty](http://www.turtlebeach.com/warranty)