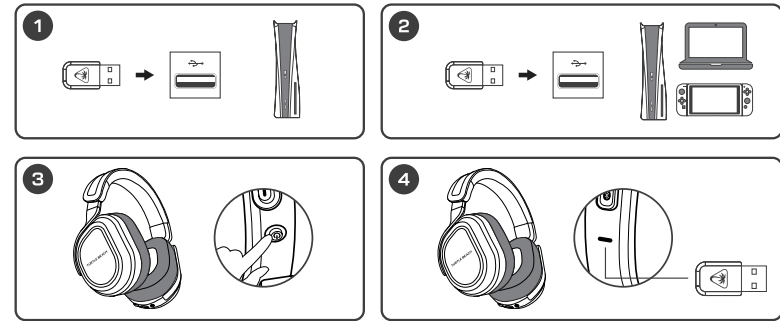


**SETUP FOR PLAYSTATION®, PC AND NINTENDO SWITCH™**  
**CONFIGURATION POUR PLAYSTATION®, PC ET NINTENDO SWITCH™**



- EN**
1. Connect the wireless transmitter to the USB port on PlayStation®.
  2. (optional) Connect the second wireless transmitter to the USB port on PC or Nintendo Switch™.
  3. Power on headset.
  4. Wait for headset and USB wireless transmitter to pair.
- ES**
1. Conecta el transmisor inalámbrico al puerto USB del PlayStation®.
  2. (Optional) Conecta el segundo transmisor inalámbrico al puerto USB del PC o la Nintendo Switch™.
  3. Enciende los auriculares.
  4. Espera a que se emparejen los auriculares y el transmisor inalámbrico USB.
- JP**
1. ワイヤレストランスミッターを PlayStation® の USB 端子に接続します。
  2. オプション 2 個目のワイヤレストランスミッターを PC または Nintendo Switch™ の USB 端子に接続します。
  3. ヘッドセットの電源を入れます。
  4. ヘッドセットと USB ワイヤレストランスミッターがペアリングされるのを待ちます。
- FR**
1. Connectez l'émetteur sans-fil au port USB de la PlayStation®.
  2. (optionnel) Connectez le second émetteur sans-fil au port USB du PC ou de la Nintendo Switch™.
  3. Allumez le casque.
  4. Attendez que le casque et l'émetteur sans-fil USB s'appairent.
- DE**
1. Verbinde den Funksender mit dem USB-Anschluss der PlayStation®.
  2. (optional) Verbinde den zweiten Funksender mit dem USB-Anschluss von PC oder Nintendo Switch™.
  3. Schalte das Headset ein.
  4. Warte auf die Kopplung von Headset und USB-Funksender.
- KO**
1. PlayStation®의 USB 포트에 무선 트랜스미터를 연결합니다.
  2. 선택 사항 PC 또는 Nintendo Switch™의 USB 포트에 두 번째 무선 트랜스미터를 연결합니다.
  3. 헤드셋의 전원을 켭니다.
  4. 헤드셋과 USB 무선 트랜스미터가 페어링될 때까지 기다립니다.

**CROSSPLAY WIRELESS SYSTEM | SYSTÈME SANS-FIL CROSSPLAY**

The CrossPlay Wireless System allows you to wirelessly switch between two platforms by pressing the CrossPlay Switch button on the headset.

Le système sans-fil CrossPlay vous permet de passer sans fil d'une plateforme à l'autre en appuyant sur le bouton CrossPlay du casque.

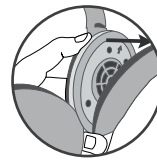
Note: Both wireless transmitters must be connected and powered on to allow switching. Switching transmitters will not automatically power on the source platform.

Remarque : les deux émetteurs sans-fil doivent être connectés et sous tension pour permettre la commutation. Le fait de changer d'émetteur n'alumera pas automatiquement la plateforme source.

| Transmitter Status   Statut de l'émetteur | LED Color   Couleur de la DEL |
|---|-------------------------------|
| Paired (Active)   Appairé (actif)         | Green   Vert                  |
| Paired (Stand-by)   Appairé (veille)      | Amber   Orange                |
| Mic is Muted   Micro désactivé            | Red   Rouge                   |

**To remove the ear pad and access the regulatory label:**  
**Pour changer les coussinets et accéder à la notice réglementaire :**

1. Remove the left ear pad by pulling the ear pad straight up using your thumb.
2. Once you've released the cloth from the lip on top, pull the ear pad straight back and it should slip right off.



To replace the ear pad, follow the same process in reverse. Pour remettre le coussinet en place, veuillez suivre la procédure inverse.

**Regulatory Compliance Statements for the STEALTH 700 GEN 3 (Wireless Gaming Headset – Headset Model: HWBBD006 & Dongle Model: HWAAD010)**

**Federal Communications Commission (FCC) Compliance Notices**

**Class B Interference Statement**  
 This equipment has been tested and found to comply with the limits for a Class B digital device, pursuant to Part 15, Subpart B of the FCC Rules. These limits are designed to provide reasonable protection against harmful interference in a residential installation. This equipment generates, uses, and can radiate radio frequency energy and, if not installed and used in accordance with the instructions, may cause harmful interference to radio communications. However, there is no guarantee that interference will not occur in a particular installation. If this equipment does cause harmful interference to radio or television reception, which can be determined by turning the equipment off and on, the user is encouraged to try to correct the interference by one or more of the following measures:

- Reorient or relocate the receiving antenna.
- Increase the separation between the equipment and receiver.
- Connect the equipment into an outlet on a circuit different from that to which the receiver is connected.
- Consult the dealer or an experienced radio/TV technician for help.

**FCC Caution:**

This device complies with Part 15 of the FCC Rules. Operation is subject to the following two conditions: (1) This device may not cause harmful interference, and (2) this device must accept any interference received, including interference that may cause undesired operation. This product is compliant with the Consumer Product Safety Improvement Act of 2008, Public Law 110-314 (CPSIA).

**FCC RF Radiation Exposure Statement:**

This equipment complies with FCC radiation exposure limits set forth for an uncontrolled environment. End users must follow the specific operating instructions for satisfying RF exposure compliance. This transmitter must not co-located or operating in conjunction with any other antenna or transmitter.

**CANADA-statement**  
 This device complies with Innovation, Science and Economic Development Canada's licence-exempt RSS(s). Operation is subject to the following two conditions :

- (1) This device may not cause interference; and
- (2) This device must accept any interference, including interference that may cause undesired operation of the device.

Le présent appareil est conforme aux CNR d'Innovation, Sciences et Développement économique Canada exemptés de licence(s) applicables aux appareils radio exempts de licence. L'exploitation est autorisée aux deux conditions suivantes :

- (1) l'appareil ne doit pas produire de brouillage;
- (2) l'utilisateur de l'appareil doit accepter tout brouillage radioélectrique subi, même si le brouillage est susceptible d'en compromettre le fonctionnement.

**Radiation Exposure Statement:**

The product complies with Canada portable RF exposure limits set forth for an uncontrolled environment and are safe for intended operation as described in this manual. The further RF exposure reduction can be achieved if the product can be kept as far as possible from the user body or set the device to lower output power if such function is available.

Le produit est conforme aux limites d'exposition pour les appareils portables RF pour les Etats-Unis et le Canada établies pour un environnement non contrôlé. Le produit est sûr pour un fonctionnement tel que décrit dans ce manuel. La réduction aux expositions RF peut être augmentée si l'appareil peut être conservé aussi loin que possible du corps de l'utilisateur ou que le dispositif est réglé sur la puissance de sortie la plus faible si une telle fonction est disponible.

**Battery Caution:**

- Do not disassemble, impact, squeeze or throw into fire;
- Do not continue to use if severe swelling;
- Do not place in a high temperature environment;
- Do not use after the battery is flooded;
- Do not use any charger other than that specifically provided for use with the equipment;
- Dispose of used batteries according to the instructions.

**IMPORTANT | IMPORTANT**

**PLEASE MAKE SURE YOUR HEADSET IS UPDATED WITH THE LATEST FIRMWARE.**  
**VEUILLEZ VOUS ASSURER QUE VOTRE CASQUE DISPOSE DE LA DERNIÈRE VERSION DU MICROLOGICIEL.**



Android



iOS

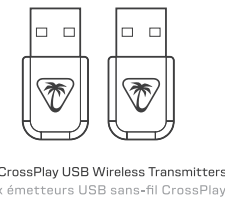
Download the Swarm™ II mobile app for Android or iOS to update your headset to the latest firmware and customize settings.

Alternatively, you can use the Swarm™ II desktop software for Windows available at [turtlebeach.com/swarm2](http://turtlebeach.com/swarm2)

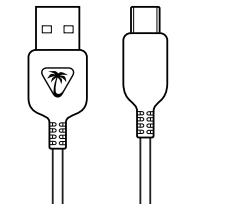
Téléchargez l'application mobile Swarm™ II pour Android ou iOS afin de mettre votre casque à jour avec la dernière version du micrologiciel et de personnaliser les paramètres.

Vous pouvez également utiliser le logiciel Swarm™ II pour Windows, disponible sur [turtlebeach.com/swarm2](http://turtlebeach.com/swarm2)

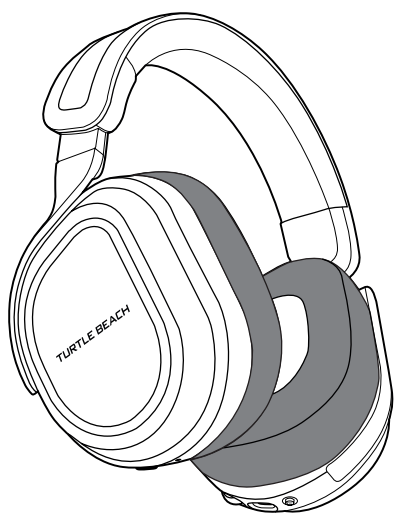
**PACKAGE CONTENTS | CONTENU**



Two CrossPlay USB Wireless Transmitters  
 Deux émetteurs USB sans-fil CrossPlay

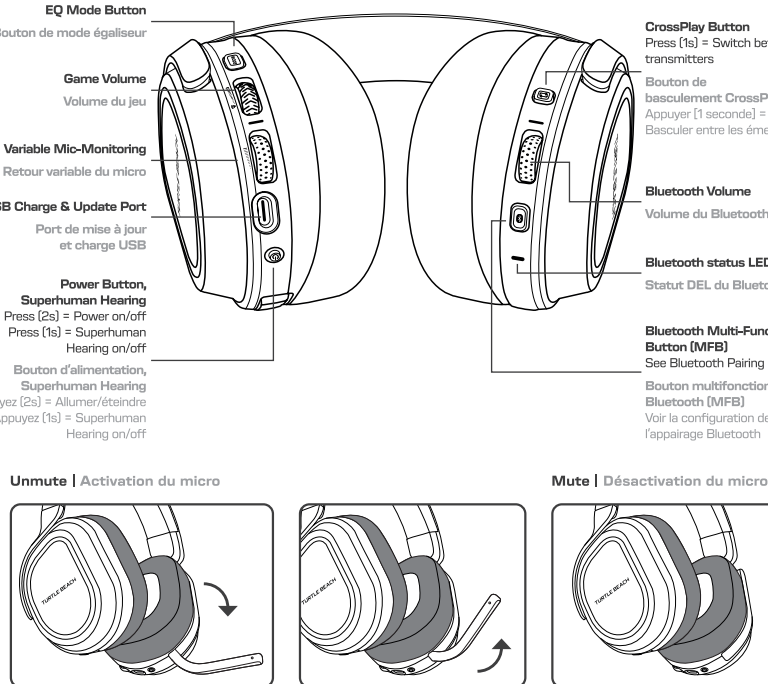


Charging Cable (USB-A to USB-C)  
 Câble de chargement (USB-A vers USB-C)



Stealth™ 700 Gaming Headset  
 Casque de jeu Stealth™ 700

**HEADSET CONTROLS | COMMANDES DU CASQUE**



**IMPORTANT | IMPORTANT**

**PLEASE MAKE SURE YOUR HEADSET IS UPDATED WITH THE LATEST FIRMWARE.**  
**VEUILLEZ VOUS ASSURER QUE VOTRE CASQUE DISPOSE DE LA DERNIÈRE VERSION DU MICROLOGICIEL.**

Download the Swarm™ II mobile app for Android or iOS to update your headset to the latest firmware and customize settings.

Alternatively, you can use the Swarm™ II desktop software for Windows available at [turtlebeach.com/swarm2](http://turtlebeach.com/swarm2)

Téléchargez l'application mobile Swarm™ II pour Android ou iOS afin de mettre votre casque à jour avec la dernière version du micrologiciel et de personnaliser les paramètres.

Vous pouvez également utiliser le logiciel Swarm™ II pour Windows, disponible sur [turtlebeach.com/swarm2](http://turtlebeach.com/swarm2)

For warranty information and service, please visit [www.turtlebeach.com/warranty](http://www.turtlebeach.com/warranty)

**WARRANTY SERVICE FOR PURCHASES IN AUSTRALIA**

Our goods come with guarantees that cannot be excluded under the Australian Consumer Law. For complete details please visit [www.turtlebeach.com/warranty](http://www.turtlebeach.com/warranty).

To make a warranty claim in Australia during the Warranty Period, Purchaser should contact the VTB repair centre: Tevewks International Pty Ltd, TD Distribution Place, Seven Hills NSW 2147, Tel: 1800 074 512

**European Union and European Free Trade Association (EFTA) Regulatory Compliance**

Declaration of Conformity

Hereby, Voyetra Turtle Beach Inc, declares that **Stealth 700 Gen 3** Headset Model: HWBBD006 & Dongle Model: HWAAD010 is in compliance with Directive 2014/30/EU (EMC), 2014/53/EU (RED), 2014/35/EU (Safety), 2015/863 amending Annex II to 2011/65/EC (RoHS), 2011/65/EU (WEEE), 2006/90/EC (REACH), 94/62/EC (PACKAGING), 2006/66/EC (Batteries), Electromagnetic Compatibility Regulations 2016(EMC), Radio Equipment Regulations 2017(Radio), Electrical Equipment Regulations 2016(Safety), The Restriction of the Use of Certain Hazardous Substances in Electrical and Electronic Equipment Regulations 2012.

The full text of the EU/UK declaration of conformity is available at the following internet address: <http://www.turtlebeach.com/homologation>

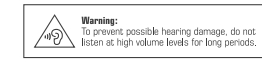
Radio frequency: 2400MHz  
 Operating frequency: 2400-2483.5MHz  
 Max. Output power: 4 dBm



This symbol on the product or its packaging indicates that this product must not be disposed of with your other household waste. Instead, it is your responsibility to dispose of your waste equipment by handing it over to a designated collection point for the recycling of waste electrical and electronic equipment. The separate collection and recycling of your waste equipment at the time of disposal will help conserve natural resources and ensure that it is recycled in a manner that protects human health and the environment. For more information about where you can drop off your waste for recycling, please contact your local authority, or where you purchased your product.

Turtle Beach Europe Ltd is obligated as a producer with a main activity of selling under The Producer Responsibility Obligations (Packaging Waste) Regulations 2007. To fulfil our obligation we are registered with Comply Direct and their Recycling Room. Here you will find advice and information on packaging waste management, recycling symbols and the waste hierarchy principles of Reduce, reuse and recycle. <https://www.complydirect.com/the-recycling-room/> For instructions in other languages, please visit <http://www.turtlebeach.com/homologation>

Copyright © 2024, Voyetra Turtle Beach, Inc. All rights reserved. No part of this document may be reproduced without permission. Any product names mentioned in this manual may be trademarks or registered trademarks and are the property of their respective owners.



この装置は、クランプ機器です。この機器は、住宅環境で使用することを目的としていますが、この装置がラジオやテレビジョン受信機に近接して使用されると、受信障害を引き起こすことがあります。取扱説明書に従って正しい取り扱いをして下さい。

VCCI-B



P/N: 426-206-005-500 RD

**IMPORTANT | IMPORTANT**

**PLEASE MAKE SURE YOUR HEADSET IS UPDATED WITH THE LATEST FIRMWARE.**  
**VEUILLEZ VOUS ASSURER QUE VOTRE CASQUE DISPOSE DE LA DERNIÈRE VERSION DU MICROLOGICIEL.**

Download the Swarm™ II mobile app for Android or iOS to update your headset to the latest firmware and customize settings.

Alternatively, you can use the Swarm™ II desktop software for Windows available at [turtlebeach.com/swarm2](http://turtlebeach.com/swarm2)

Téléchargez l'application mobile Swarm™ II pour Android ou iOS afin de mettre votre casque à jour avec la dernière version du micrologiciel et de personnaliser les paramètres.

Vous pouvez également utiliser le logiciel Swarm™ II pour Windows, disponible sur [turtlebeach.com/swarm2](http://turtlebeach.com/swarm2)

**QUICK START GUIDE**  
**GUIDE DE DÉMARRAGE RAPIDE**  
**PLAYSTATION® VERSION**

**IMPORTANT**  
**READ BEFORE USING**

**IMPORTANT**  
**LIRE AVANT UTILISATION**

**STEALTH™ 700 GEN 3**  
**CERTIFICATION MODEL:**  
**HEADSET: HWBBD006**  
**DONGLE: HWAAD010**

**TURTLE BEACH™**

Any questions? Des questions?  
[www.turtlebeach.com/support](http://www.turtlebeach.com/support)

Please register your product to receive important updates.  
 Enregistrez votre produit pour recevoir les mises à jour importantes.  
[www.turtlebeach.com/productregistration](http://www.turtlebeach.com/productregistration)

For warranty, visit:  
 Concernant la garantie, visitez :  
[www.turtlebeach.com/warranty](http://www.turtlebeach.com/warranty)