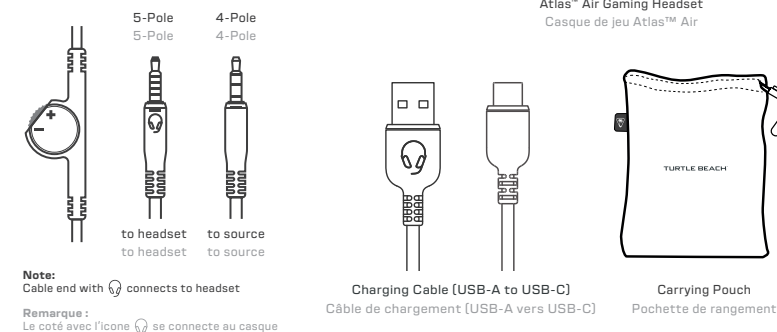
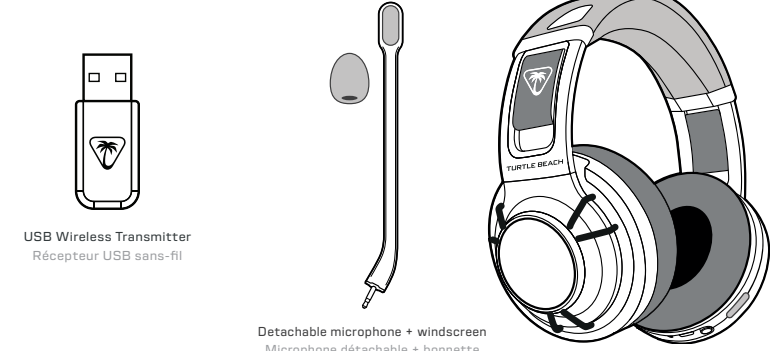


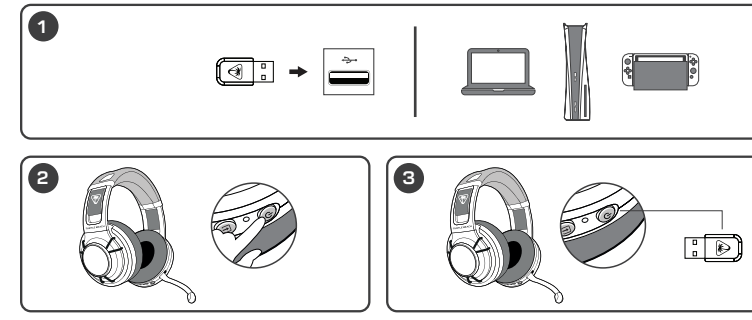
# FRONT

### PACKAGE CONTENTS | CONTENU



Note: Cable end with [symbol] connects to headset. Remarque: Le côté avec l'icône [symbol] se connecte au casque.

### SETUP FOR PC, PLAYSTATION® AND NINTENDO SWITCH™ CONFIGURATION POUR PC, PLAYSTATION® ET NINTENDO SWITCH™



- EN 1. Connect wireless transmitter to the USB-A port on PC, PlayStation® or Nintendo Switch™. 2. Power on headset. 3. Wait for headset and USB transmitter to pair.
FR 1. Connectez l'émetteur sans-fil au port USB-A du PC, de la PlayStation® ou de la Nintendo Switch™. 2. Allumez le casque. 3. Attendez que le casque et l'émetteur USB s'appairent.
DE 1. Schließen Sie den Funksender an den USB-A-Anschluss von PC, PlayStation® oder Nintendo Switch™ an. 2. Schalten das Headset ein. 3. Warte, bis Headset und USB Sender gekoppelt sind.
JP 1. ワイヤレストランスミッターを PC、PlayStation®, Nintendo Switch™ の USB-A 端子に接続します。 2. ヘッドセットの電源を入れます。 3. ヘッドセットと USB トランスミッターがペアリングされるのを待ちます。

### Regulatory Compliance Statements for the ATLAS AIR (Wireless Gaming Headset – Headset Model: HWBB0004 & Dongle Model: HWAAD004)

Federal Communications Commission (FCC) Compliance Notices. Class B Interference Statement. FCC Caution. FCC RF Radiation Exposure Statement. CANADA-statement. BATTERY CAUTION. Includes safety warnings and technical specifications.

### For warranty information and service, please visit: www.turtlebeach.com/warranty

WARRANTY SERVICE FOR PURCHASES IN AUSTRALIA. Our goods come with guarantees that cannot be excluded under the Australian Consumer Law. Declaration of Conformity. Includes CE, UKCA, and FCC logos. Pin: 426-248-005-500 RE



### QUICK START GUIDE GUIDE DE DÉMARRAGE RAPIDE

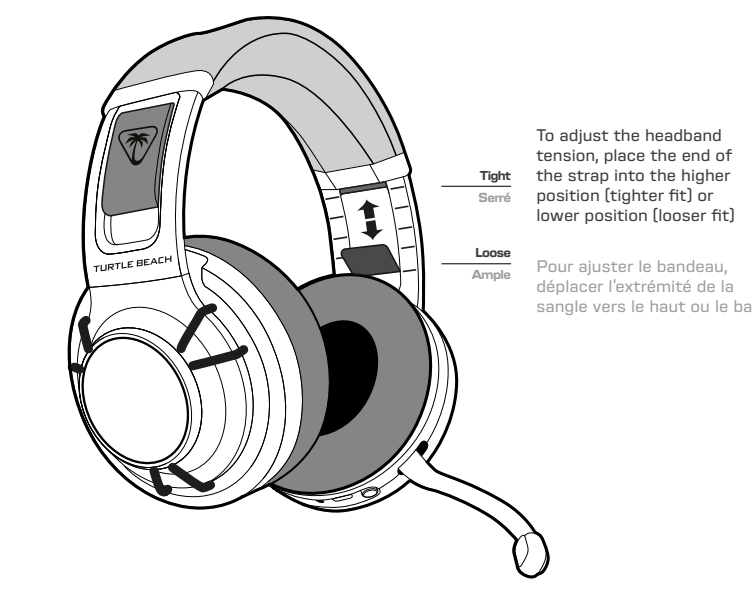
IMPORTANT READ BEFORE USING IMPORTANT LIRE AVANT UTILISATION. Includes certification model: HWBB0004, Dongle: HWAAD004.

# BACK

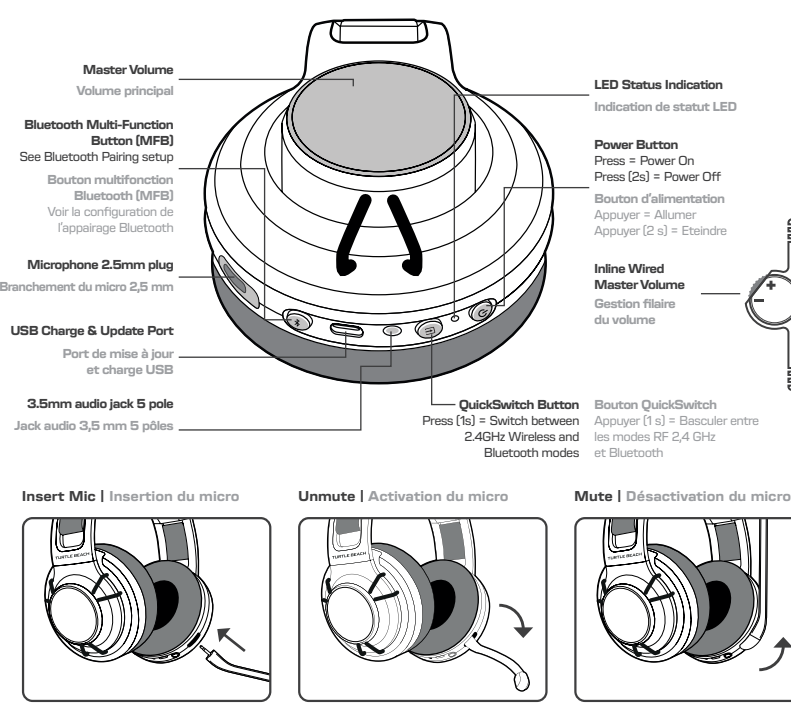
### IMPORTANT | IMPORTANT PLEASE MAKE SURE YOUR HEADSET IS UPDATED WITH THE LATEST FIRMWARE.

Download the SWARM™ II desktop software for Windows available at: turtlebeach.com/swarm2. Includes QR codes for Android and iOS app download.

### HEADBAND ADJUSTMENT | RÉGLAGE DU BANDEAU



### HEADSET CONTROLS | COMMANDES DU CASQUE



### BLUETOOTH SETUP | CONFIGURATION BLUETOOTH

Instructions for Bluetooth pairing. Includes steps: 1. Press and hold the Bluetooth multi-function button (MFB) until the 'Pairing Bluetooth' voice prompt plays. 2. After placing your headset in pairing mode, select the headset from within your device's Bluetooth settings menu to connect. 3. The Bluetooth MFB is used to answer and end calls as well as media playback control when connected to a compatible mobile phone.

### QUICKSWITCH BUTTON | BOUTON QUICKSWITCH

The QuickSwitch button allows you to quickly switch between low-latency 2.4GHz Wireless and Bluetooth modes based on your preference. Use Bluetooth mode to make calls, listen to music or connect to other compatible Bluetooth devices. Includes diagrams for Insert Mic, Unmute, and Mute.



Any questions? Des questions? www.turtlebeach.com/support. Please register your product to receive important updates. Enregistrez votre produit pour recevoir les mises à jour importantes. www.turtlebeach.com/productregistration. For warranty, visit: www.turtlebeach.com/warranty.