


essentiel 	LAVE-LINGE ELF914DD4_8005184	Bulletin no	Rev no	Date
	TECHNICAL EXPLANATION OF THE MODIFICATION	2020-16	0	1.04.2020

		<b>Technical Bulletin No</b>
<b>Subject</b>	SHEET FLAME BARRIER CHANGE	
<b>Key Words</b>	SHEET FLAME BARRIER	

**Problem description / Reason of the modification:**

Within the scope of product reliability, 2858780100 coded sheet flame barrier will be used instead of 2843030200 PC abs Flame barrier

<b>Affected period:</b> 1.05.2020	<b>Application Date:</b> 1.05.2020
--------------------------------------	---------------------------------------

**Content of the modification (Which items are modified?):**

The 2843030200 pc flame barrier will be removed from the products to which it is attached, and a flame barrier with a stock code of 2858780100 will be added instead

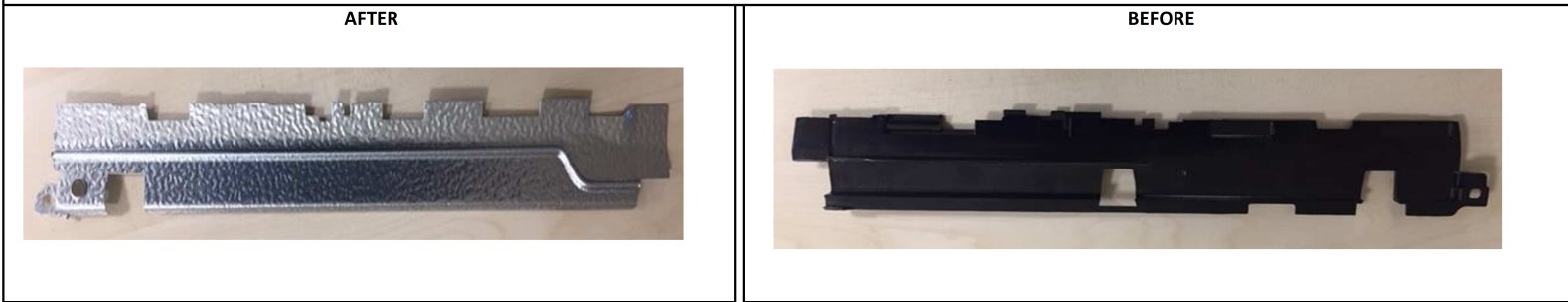
**APPLICATION IN THE FIELD:**

**Needed equipment:**

It can also be used in place of old products

**How will be the application of the modification in the field?:**

In case of problems in old products, new sheet metal flame barrier can be used.



INFORMATION ABOUT THE PART CHANGES											
Ser. Ref	New part(s) / Group(s)				Code	Ser. Ref	Old part(s) / Group(s)				Code
	Stock number	Part / group name	#				Stock number	Part / group name	#		
1537	2858780100	FLAME BARRIER	1	A3		1537	2843030200	FLAME BARRIER	1	A3	

**New Part(s) / Group(s)**

Parts are added to BOM of the product.  Part datas are completed by Production Planning department.

Parts will not be added to BOM, It is only for service.

**CODE EXPLANATION :**

**A**-Old stocks can be used; Old & new parts are fully interchangeable  
**B**-Old stocks can be used; Old parts are interchangeable with old productions & new parts are interchangeable with new productions  
**C**-Old stocks can not be used. New parts are interchangeable with old & new productions  
**D**-Old stocks can not be used. New parts are interchangeable with new productions  
**E**-Old stocks can be used in old productions. New parts are interchangeable with old & new productions

1-Performance / 2-Production improvement / 3-Safety / 4-Material or dimension change / 5-Additional part / 6-Part cancellation / 7-Alternative use

RELATED PRODUCTS						
No	Modification Date	Brand	Model	Started from	Finished at	Signature

	<b>LAVE-LINGE ELF914DD4_8005184</b>			<b>Bulletin no</b>	<b>Rev no</b>	<b>Date</b>
				2020_37	0	1.08.2020

**TECHNICAL EXPLANATION OF THE MODIFICATION**

<b>Subject</b>	L14 & XL14 atlas 32/kingclean motor product front counterweight and spring change	<b>Technical Bulletin No</b>
----------------	---	------------------------------

<b>Key Words</b>	L14 spring and front counterweight change
------------------	---

**Problem description / Reason of the modification:**

Front counterweight and spring change is made to improve the orbit profile of the dynamic system

<b>Affected period:</b> 1.08.2020	<b>Application Date:</b> 1.08.2020
--------------------------------------	---------------------------------------

**Content of the modification (Which items are modified?):**

Suspension spring  
Front Counterweight

**APPLICATION IN THE FIELD:**

**Needed equipment:**

No new equipment is needed

**How will be the application of the modification in the field?:**

The old parts will be relaced with the below specified new parts

AFTER													BEFORE																																																												
<div style="border: 1px solid black; padding: 2px;">YAY</div> <table border="1"> <tr> <th>TIP</th><th>L</th><th>F0</th><th>F1</th><th>F2</th><th>D</th><th>A</th><th>B</th><th>Ø f</th><th>YAY KATSAYISI (+0,15/-0,2)</th><th>RENK</th><th>GOSTERIMI /COLOR</th> </tr> <tr> <td>03-10</td><td>172</td><td>46 N</td><td>196 N</td><td>346 N</td><td>33,2</td><td>217</td><td>31,3</td><td>3,8</td><td>7,5 N/mm</td><td>BEYAZ</td><td>WHITE</td> </tr> </table> <div style="border: 1px solid black; padding: 2px; margin-top: 10px;">ADA: 12,2 Kg</div>													TIP	L	F0	F1	F2	D	A	B	Ø f	YAY KATSAYISI (+0,15/-0,2)	RENK	GOSTERIMI /COLOR	03-10	172	46 N	196 N	346 N	33,2	217	31,3	3,8	7,5 N/mm	BEYAZ	WHITE	<div style="border: 1px solid black; padding: 2px;">YAY</div> <table border="1"> <tr> <th>TIP</th><th>L</th><th>F0</th><th>F1</th><th>F2</th><th>D</th><th>A</th><th>B</th><th>Ø f</th><th>YAY KATSAYISI (+0,15/-0,2)</th><th>RENK</th><th>GOSTERIMI /COLOR</th> </tr> <tr> <td>04-11</td><td>172</td><td>70 N</td><td>220 N</td><td>371 N</td><td>33,2</td><td>217</td><td>31,3</td><td>3,8</td><td>7,5 N/mm</td><td>MAVI</td><td>BLU</td> </tr> </table> <div style="border: 2px solid black; padding: 2px; margin-top: 10px;">ADA : 13,5Kg</div>													TIP	L	F0	F1	F2	D	A	B	Ø f	YAY KATSAYISI (+0,15/-0,2)	RENK	GOSTERIMI /COLOR	04-11	172	70 N	220 N	371 N	33,2	217	31,3	3,8	7,5 N/mm	MAVI	BLU
TIP	L	F0	F1	F2	D	A	B	Ø f	YAY KATSAYISI (+0,15/-0,2)	RENK	GOSTERIMI /COLOR																																																														
03-10	172	46 N	196 N	346 N	33,2	217	31,3	3,8	7,5 N/mm	BEYAZ	WHITE																																																														
TIP	L	F0	F1	F2	D	A	B	Ø f	YAY KATSAYISI (+0,15/-0,2)	RENK	GOSTERIMI /COLOR																																																														
04-11	172	70 N	220 N	371 N	33,2	217	31,3	3,8	7,5 N/mm	MAVI	BLU																																																														

**INFORMATION ABOUT THE PART CHANGES**

Ser. Ref	New part(s) / Group(s)				Code	Ser. Ref	Old part(s) / Group(s)				Code
	Stock number	Part / group name	#				Stock number	Part / group name	#		
53	2820360300	SUSPENSION SPRING	2		C1	53	2820360400	SUSPENSION SPRING	2		C1
149	2831720900	LOWER COUNTER WEIGHT	1		C1	149	2831720700	LOWER COUNTER WEIGHT	1		C1
149	2841180700	COUNTERWEIGHT-LOWER				149	2841180900	COUNTERWEIGHT-LOWER	1		C1

**New Part(s) / Group(s)**

Parts are added to BOM of the product.

Parts will not be added to BOM, It is only for service.


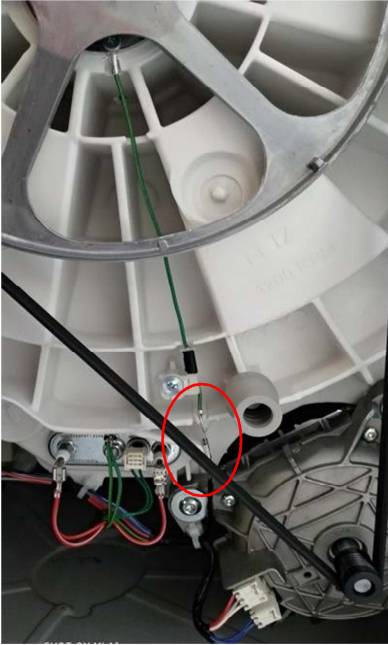


Part datas are completed by Production Planning department.


**CODE EXPLANATION :**

- A-Old stocks can be used; Old & new parts are fully interchangeable
  - B-Old stocks can be used; Old parts are interchangeable with old productions & new parts are interchangeable with new productions
  - C-Old stocks can not be used. New parts are interchangeable with old & new productions
  - D-Old stocks can not be used. New parts are interchangeable with new productions
  - E-Old stocks can be used in old productions. New parts are interchangeable with old & new productions
- 1-Performance / 2-Production improvement / 3-Safety / 4-Material or dimension change / 5-Additional part / 6-Part cancellation / 7-Alternative use

**RELATED PRODUCTS**

No	Modification Date	Brand	Model	Started from	Finished at	Signature	

essentiel 		LAVE-LINGE ELF914DD4_8005184	Bulletin no	Rev no	Date						
			CMI_2020_06	0	1.01.2020						
<b>TECHNICAL EXPLANATION OF THE MODIFICATION</b>					<b>Technical Bulletin No</b>						
<b>Subject</b>	<b>Production of Large, Brushless Washing Machines on Production Line M1</b>										
<b>Key Words</b>											
<b>Problem description / Reason of the modification:</b>											
Two parted drum earth connection was defined instead of direct connection to BOM list of washing machines with LARGE dynamic system and brushless motor, in order to produce these products on production line M1.											
<b>Affected period:</b>					<b>Application Date:</b>						
1.01.2020					1.01.2020						
<b>Content of the modification (Which items are modified?):</b>											
The drum earthing was a direct connection with a single earthing cable on main cable harness. The length of earthing cable on main cable harness was shortened and 2714801700 part numbered interconnection cable was defined to BOM.											
<b>APPLICATION IN THE FIELD:</b>											
<b>Needed equipment:</b>											
None											
<b>How will be the application of the modification in the field?:</b>											
Cable harness which are already in stock can be used on both new and old washing machines. But from 01.01.2020 "1821-2714801700 RAST CONNECTOR ADAPTER CABLE" have to be demanded with main cable harness demands.											
<b>After</b>			<b>Before</b>								
											
			SER.REF.1821								
											
<b>INFORMATION ABOUT THE PART CHANGES</b>											
Ser. Ref	New part(s) / Group(s)				Code	Ser. Ref	Old part(s) / Group(s)				Code
	Stock number	Part / group name		#			Stock number	Part / group name		#	
1821	2714801700	RAST CONNECTOR ADAPTER CABLE		1	A2						
<b>New Part(s) / Group(s)</b>											
<input type="checkbox"/> Parts are added to BOM of the product.						<input type="checkbox"/> Part datas are completed by Production Planning department.					
<input type="checkbox"/> Parts will not be added to BOM, It is only for service.											
<b>CODE EXPLANATION :</b>											
A-Old stocks can be used; Old & new parts are fully interchangeable											
B-Old stocks can be used; Old parts are interchangeable with old productions & new parts are interchangeable with new productions											
C-Old stocks can not be used. New parts are interchangeable with old & new productions											
D-Old stocks can not be used. New parts are interchangeable with new productions											
E-Old stocks can be used in old productions. New parts are interchangeable with old & new productions											
1-Performance / 2-Production improvement / 3-Safety / 4-Material or dimension change / 5-Additional part / 6-Part cancellation / 7-Alternative use											
<b>RELATED PRODUCTS</b>											
No	Modification Date	Brand	Model	Started from	Finished at	Signature					

essentiel 	LAVE-LINGE ELF914DD4_8005184			Bulletin no	Rev no	Date
				CMI_2020_24	0	1.06.2020
	TECHNICAL EXPLANATION OF THE MODIFICATION					

		Technical Bulletin No
Subject	Suspension spring change	
Key Words	Spring	

**Problem description / Reason of the modification:**

For better performance of the dynamic group, the static equilibrium length of the system has been brought to a more optimised position by changing the Suspension springs

Affected period:	Application Date:
1.06.2020	1.06.2020

**Content of the modification (Which items are modified?):**

Suspension Spring

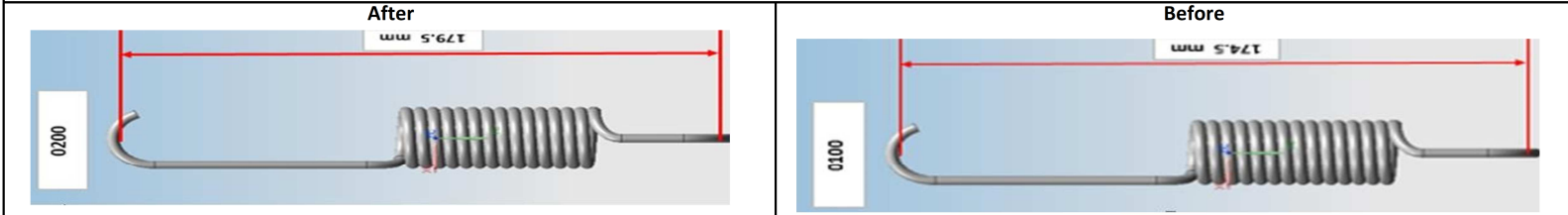
**APPLICATION IN THE FIELD:**

**Needed equipment:**

Standard equipment

**How will be the application of the modification in the field?:**

The current connected springs must be replaced with the below specified (new) springs.



INFORMATION ABOUT THE PART CHANGES											
Ser. Ref	New part(s) / Group(s)				Code	Ser. Ref	Old part(s) / Group(s)				Code
	Stock number	Part / group name	#				Stock number	Part / group name	#		
53	2443500200	SUSPENSION SPRING	2		C2	53	2443500100	SUSPENSION SPRING	2		C2

**New Part(s) / Group(s)**

Parts are added to BOM of the product.

Part datas are completed by Production Planning department.

Parts will not be added to BOM, It is only for service.

**CODE EXPLANATION :**

A-Old stocks can be used; Old & new parts are fully interchangeable

B-Old stocks can be used; Old parts are interchangeable with old productions & new parts are interchangeable with new productions

C-Old stocks can not be used. New parts are interchangeable with old & new productions

D-Old stocks can not be used. New parts are interchangeable with new productions

E-Old stocks can be used in old productions. New parts are interchangeable with old & new productions

1-Performance / 2-Production improvement / 3-Safety / 4-Material or dimension change / 5-Additional part / 6-Part cancellation / 7-Alternative use

RELATED PRODUCTS						
No	Modification Date	Brand	Model	Started from	Finished at	Signature

essentiel <b>b</b>		LAVE-LINGE ELF914DD4_8005184		Bulletin no	Rev no	Date					
				CMI_2020_39	0	21.10.2020					
TECHNICAL EXPLANATION OF THE MODIFICATION						Technical Bulletin No					
Subject	Door Lock Problem Due To Ntc Defect										
Key Words	NTC, Door										
<b>Problem description / Reason of the modification:</b>											
<p>In the <b>4.8 kohm NTCs with TKS logo belonging to Thinking company with stock code 2804980200</b> located on the water heaters with stock code 2882601600 and 2882601700 1950W (long) and with stock code 2882602500 and 2882602600 1450W (short), there were cases where the NTC resistance values were out of tolerance. Due to the defect, the temperature value in the machine is read higher than the actual temperature. For this reason, when the machine is plugged in, since the temperature inside appears to be at a high value, the security algorithm is activated and the machine usually <b>does not open the door</b> at the end of the program.</p>											
<b>Affected period:</b>						<b>Application Date:</b>					
May - September 2020 machine production month/year code						21.10.2020					
<b>Content of the modification (Which items are modified?):</b>											
As the first step in complaints of not opening the door in the field, the resistance value of the NTC on the water heater in the machine should be measured. If the resistance value of the NTC measured at room temperature is lower than 1300 ohms, it is necessary to replace the NTC <b>with the same stock 2804980200 Epcos 4.8 kohm NTC or 2806720200 Elth 4.8 kohm NTC</b> and re-check.											
<b>APPLICATION IN THE FIELD:</b>											
<b>Needed equipment:</b>											
Multimeter (for measuring the resistance of the NTCs)											
<b>How will be the application of the modification in the field?:</b>											
The resistance value of the NTC on the heater should be measured.											
<b>After</b> <b>EPCOS</b>				<b>Before</b> <b>TKS - THINKING</b>							
											
<b>ELTH</b>											
											
INFORMATION ABOUT THE PART CHANGES											
Ser. Ref	New part(s) / Group(s)				Ser. Ref	Old part(s) / Group(s)					
	Stock number	Part / group name	#	Code		Stock number	Part / group name	#	Code		
171	2804980200	NTC (Epcos - 4,8kohm)	1	A2	171	2804980200	NTC (TKS - Thinking)	1	C2		
171	2806720200	NTC (Elth - 4,8kohm)	1	A2							
<b>New Part(s) / Group(s)</b>											
<input checked="" type="checkbox"/>		Parts are added to BOM of the product.				<input type="checkbox"/>				Part datas are completed by Production Planning department.	
<input type="checkbox"/>		Parts will not be added to BOM, It is only for service.									
<b>CODE EXPLANATION :</b>											
A-Old stocks can be used; Old & new parts are fully interchangeable											
B-Old stocks can be used; Old parts are interchangeable with old productions & new parts are interchangeable with new productions											
C-Old stocks can not be used. New parts are interchangeable with old & new productions											
D-Old stocks can not be used. New parts are interchangeable with new productions											
E-Old stocks can be used in old productions. New parts are interchangeable with old & new productions											
1-Performance / 2-Production improvement / 3-Safety / 4-Material or dimension change / 5-Additional part / 6-Part cancellation / 7-Alternative use											
RELATED PRODUCTS											
No	Modification Date	Brand	Model	Started from	Finished at	Signature					

essentiel	LAVE-LINGE ELF914DD4_8005184			Bulletin no	Rev no	Date
				CMI_2020_20	0	1.05.2020

**TECHNICAL EXPLANATION OF THE MODIFICATION**

**Technical Bulletin No**

<b>Subject</b>	New alternative EMI filter (Iskra) transition with new terminal plate
<b>Key Words</b>	EMI Filter

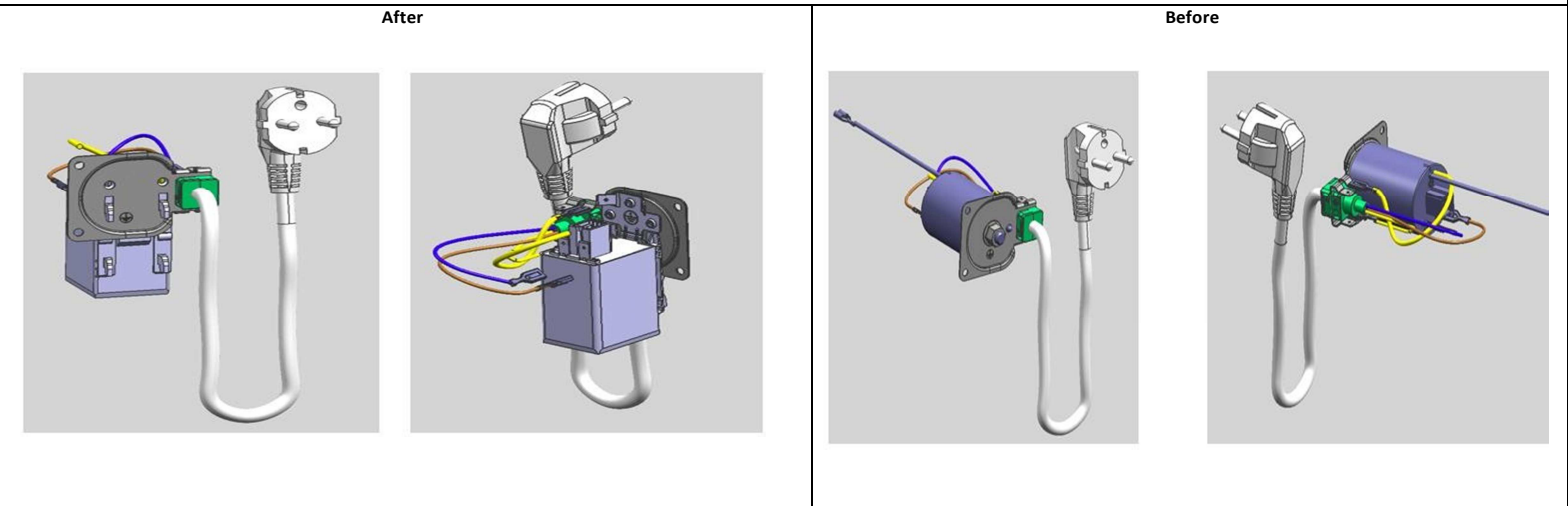
**Problem description / Reason of the modification:**  
 Assembling method of new alternative EMI filter was defined.

<b>Affected period:</b> All products that have 2827980700-2834310100 / 2827981200-2834310400 part numbered EMI filters.	<b>Application Date:</b> 1.05.2020
--	---------------------------------------

**Content of the modification (Which items are modified?):**  
 2003721300 part numbered hooked type EMI filter was defined as an alternative to 2827980700-2834310100 part numbered cylindrical type EMI filters.  
 2003721600 part numbered hooked type EMI filter was defined as an alternative to 2827981200-2834310400 part numbered cylindrical type EMI filters.

**APPLICATION IN THE FIELD:**  
**Needed equipment:**  
 None

**How will be the application of the modification in the field?:**  
 In all products produced since from 01.05.2020, new hooked type EMI filter can be used.  
 2003721300 part numbered hooked type EMI filter was defined as an alternative to 2827980700-2834310100 part numbered cylindrical type EMI filters.  
 2003721600 part numbered hooked type EMI filter was defined as an alternative to 2827981200-2834310400 part numbered cylindrical type EMI filters.  
 When new alternative EMI filters (2003721300 and 2003721600) are used, 2858560300 part numbered terminal plate also must be used.



**INFORMATION ABOUT THE PART CHANGES**

Ser. Ref	New part(s) / Group(s)			Code	Ser. Ref	Old part(s) / Group(s)			Code
	Stock number	Part / group name	#			Stock number	Part / group name	#	
162	2003721300	INTERFERENCE SUPPRESSOR	1	B7					
162	2003721600	INTERFERENCE SUPPRESSOR	1	B7					
1575	2858560300	TERMINAK SHEET	1	B7					
1467	9003860200	SCREW	2	B7					

**New Part(s) / Group(s)**

Parts are added to BOM of the product.

Part datas are completed by Production Planning department.

Parts will not be added to BOM, It is only for service.

**CODE EXPLANATION :**

A-Old stocks can be used; Old & new parts are fully interchangeable  
 B-Old stocks can be used; Old parts are interchangeable with old productions & new parts are interchangeable with new productions  
 C-Old stocks can not be used. New parts are interchangeable with old & new productions  
 D-Old stocks can not be used. New parts are interchangeable with new productions  
 E-Old stocks can be used in old productions. New parts are interchangeable with old & new productions

1-Performance / 2-Production improvement / 3-Safety / 4-Material or dimension change / 5-Additional part / 6-Part cancellation / 7-Alternative use

**RELATED PRODUCTS**

No	Modification Date	Brand	Model	Started from	Finished at	Signature