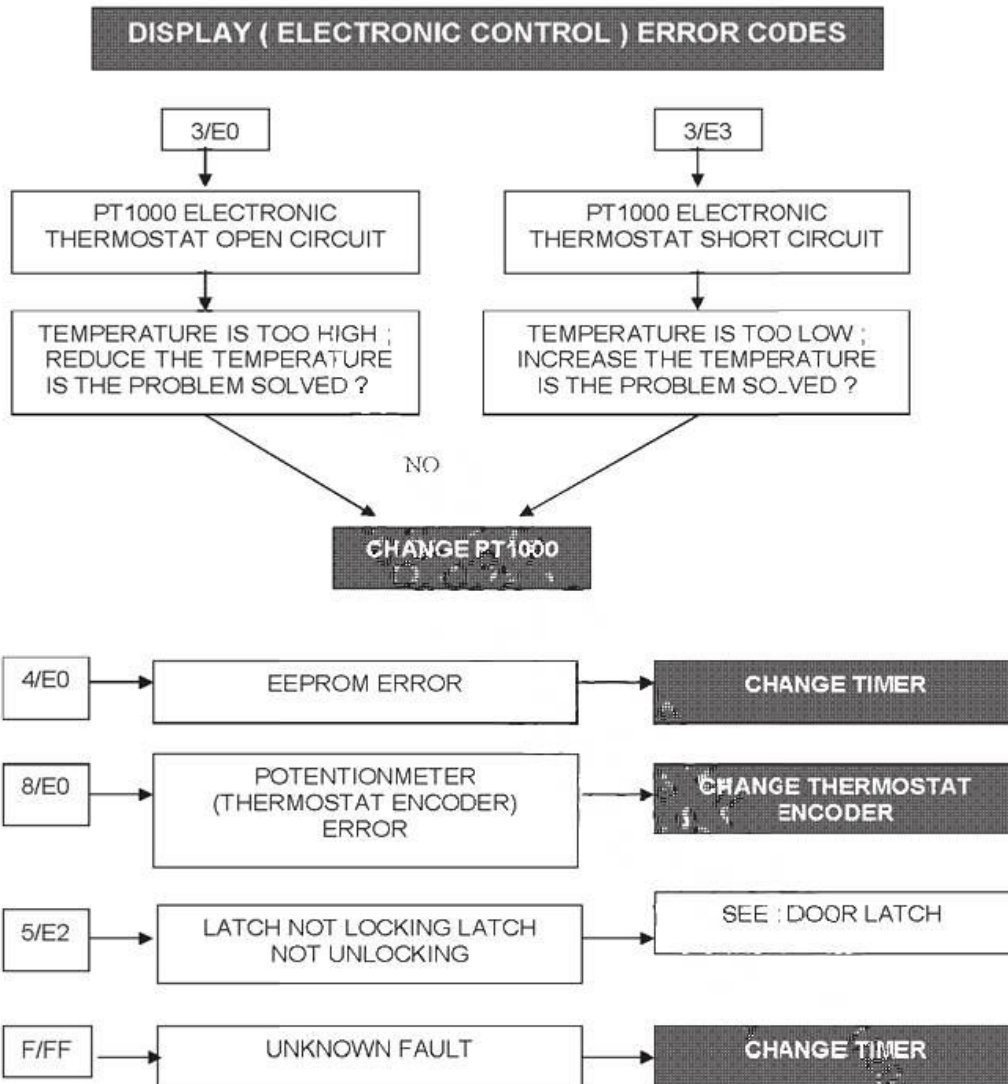




MANUEL DE SERVICE DU FOUR PYROLYTIQUE

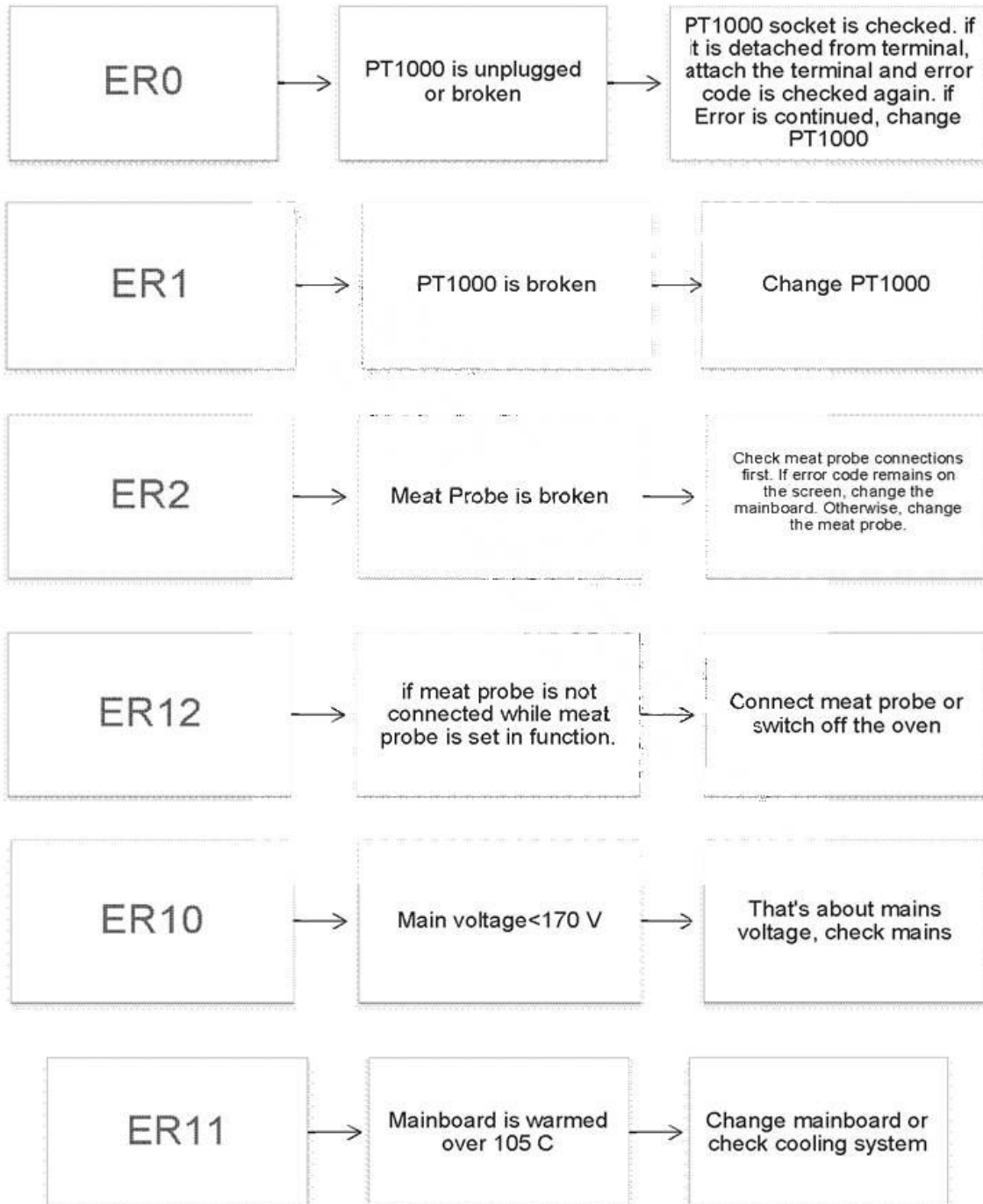


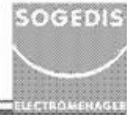
## MANUEL DE SERVICE DU FOUR PYROLYTIQUE



If product use vestel mainboard;

### OVEN ERROR CODES:

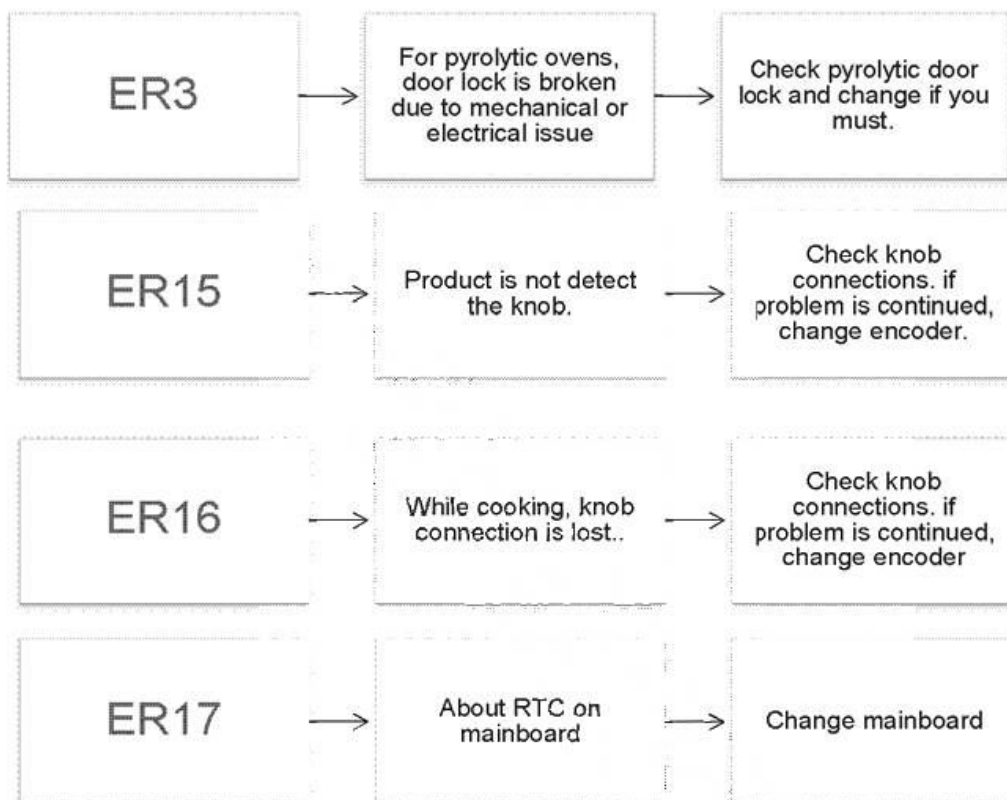




MANUEL DE SERVICE DU FOUR PYROLYTIQUE

ER7	Product center temperature is not reached less than 200 C or thermostat is configured less than 200 C while cooking continuously for 60 minutes	Check heaters and connections.
ER8	Product is used much energy from normal.	Change mainboard.
ER9	While cooking, product center temperature is reached over 340 C. Overheating.	Check heaters and mainboard.
ER4	Communication error about mainboard and Display	Check connections between mainboard and display. if problem is continued, change mainboard
ER5	Electrical issue.	Check wiring according to wiring diagram.
ER6	Product is working continuously during 6 hours.	When product is used again, error code is erased.
DOOR	For pyrolytic ovens, give warning about door. "Close the door"	When product is used again, warning is erased.

## MANUEL DE SERVICE DU FOUR PYROLYTIQUE



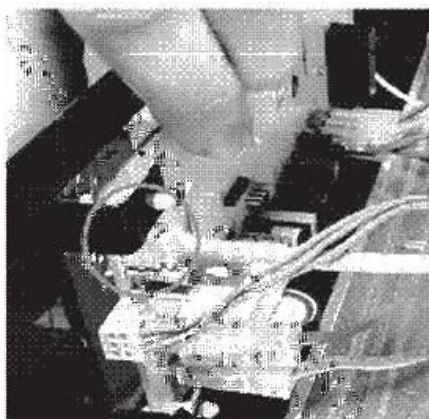
## MANUEL DE SERVICE DU FOUR PYROLYTIQUE



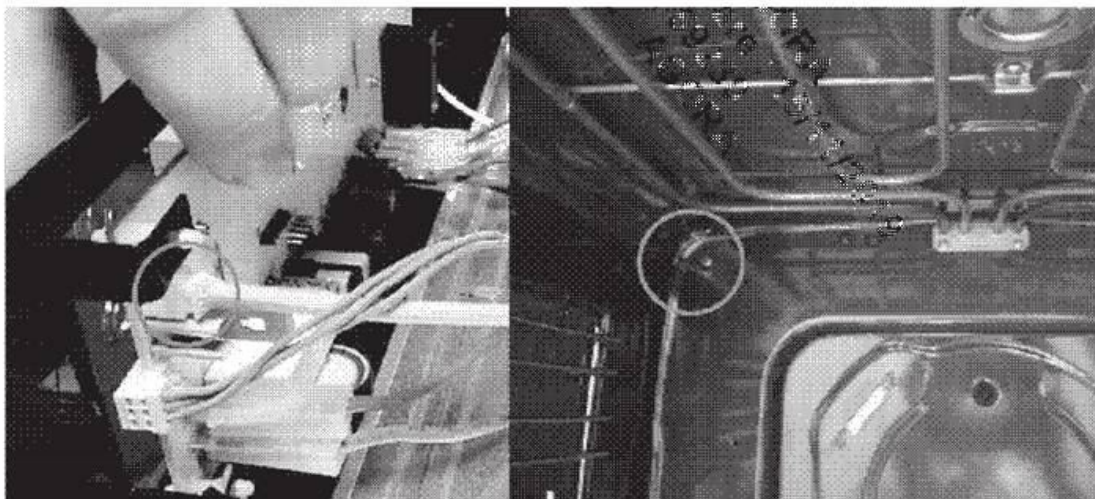
### Changing Visio Touch Control Panels / Visio Touch Error Codes

**ERI:** There is a fault with the pt1000 sensor (circuit, sensor or cable) that detects the internal temperature of the oven.

1. Check PT1000 connections at display.



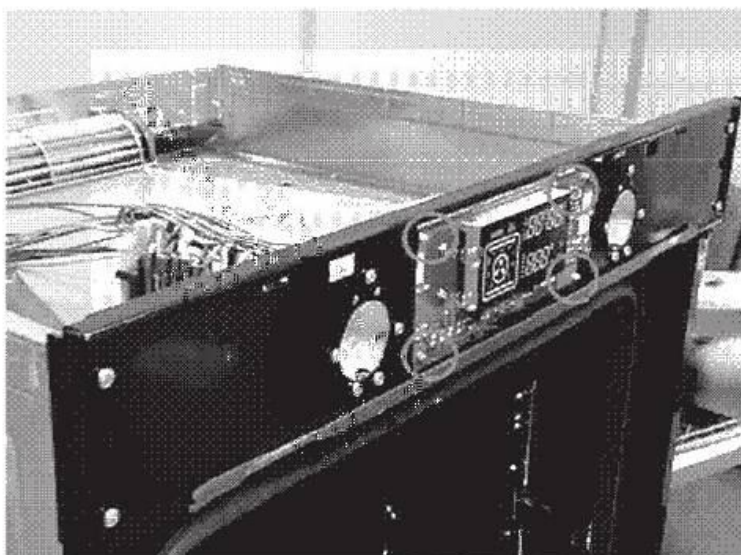
2. Remove PT1000 from Visio touch and unscrew the bulb from cavity as below.



## MANUEL DE SERVICE DU FOUR PYROLYTIQUE

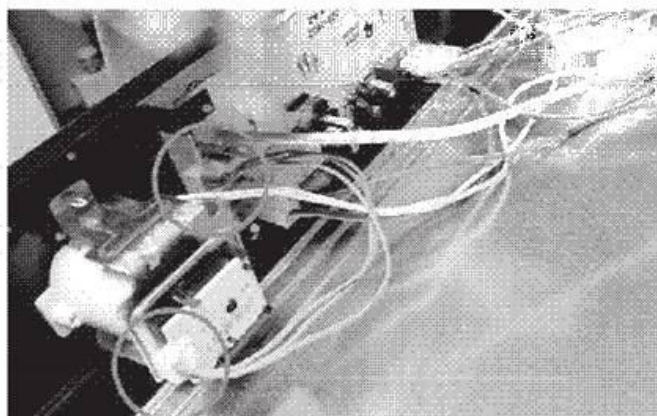


3- If problem is not solved, change visio touch: Remove the visio touch by using nippers



ER2: Error about encoder of thermostat

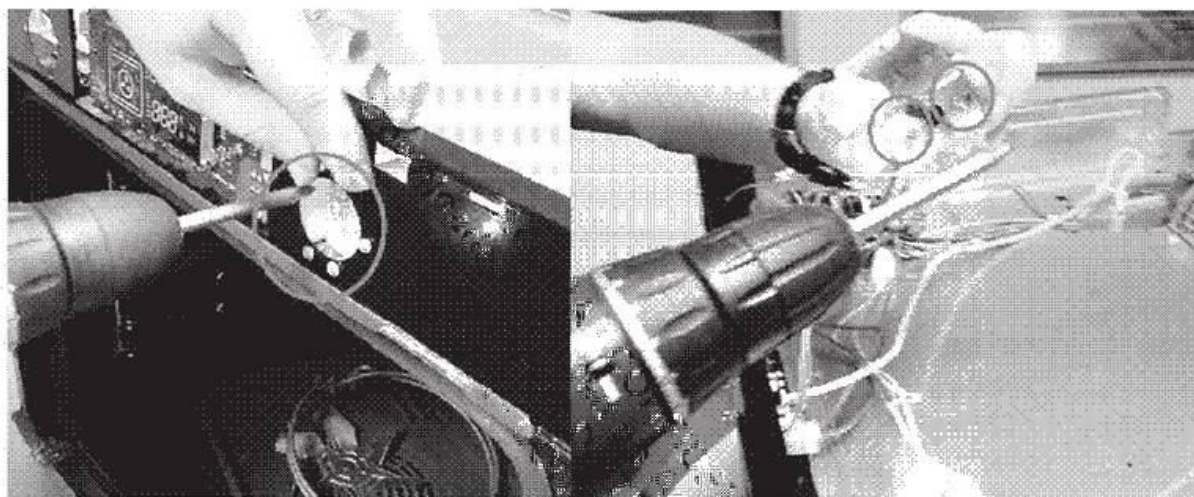
Check encoder wiring



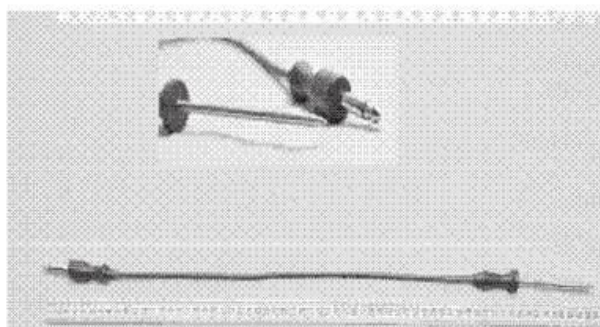
## MANUEL DE SERVICE DU FOUR PYROLYTIQUE



Change encoder cable . if problem not solved, change encoder itself.

**ER3: Error about Meat Probe**

Check wiring of meat probe or encoder connections. if problem not solved, change meat probe. if error still continues, change encoder.



## MANUEL DE SERVICE DU FOUR PYROLYTIQUE

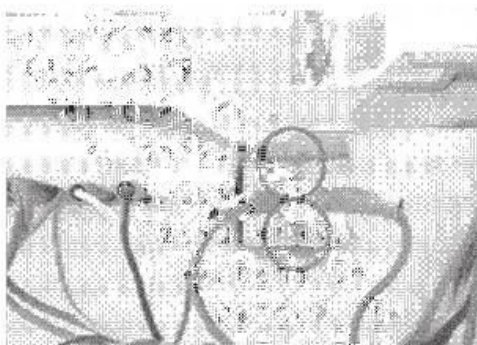


If there is a temporary disconnection when Er 1, Er 2 or Er 3 occurs, the "-" and "+" keys can be pressed together to bring the oven to ready status. If the fault is not temporary, the electronic circuit must be repaired.

**ER4:** Oven temperature is higher than 350 degrees.

When Er 4 is formed, the oven can be used again by pressing the "-" and "+" keys together when the oven temperature falls below 260 °C.

If temperature is not decreased, change limit thermostat.



If limit thermostat is active, check PT1000 and encoder of thermostat, if you find a problem change the part.

**ER5:** While manual cooking and cooking with meat probe, there is a maximum cooking time. If function is not changed for 3 hours, heaters will be stopped and error code is shown on display.

When Er 5 is formed, the oven can be ready to use again by pressing the "-" and "-" keys together

**ER6:** If door lock is not detected when the door is locked, the resistances are disabled and the error condition is indicated.

Check door lock connections, change door lock or cables, if the problem not solved, change Visio Touch