



SECHE LINGE

SLC 6L2

Aide au Diagnostic

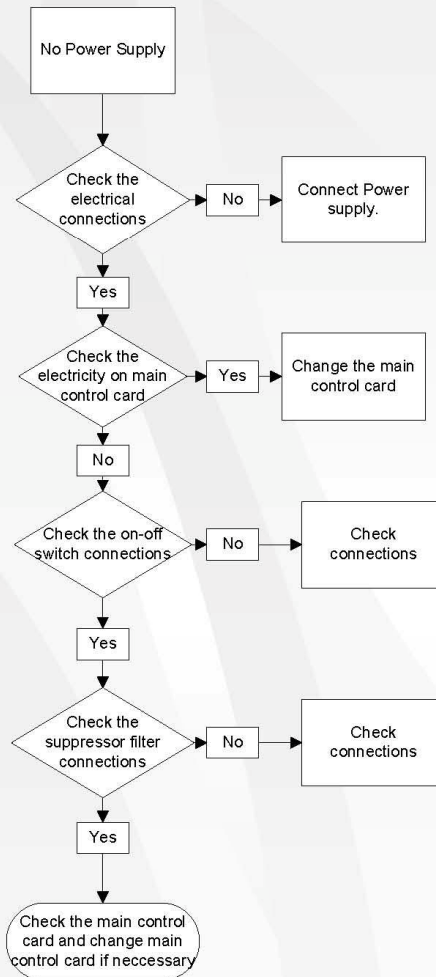
- Diagrammes Dysfonctionnements

- Programme Test

LISTO

SECHE LINGE

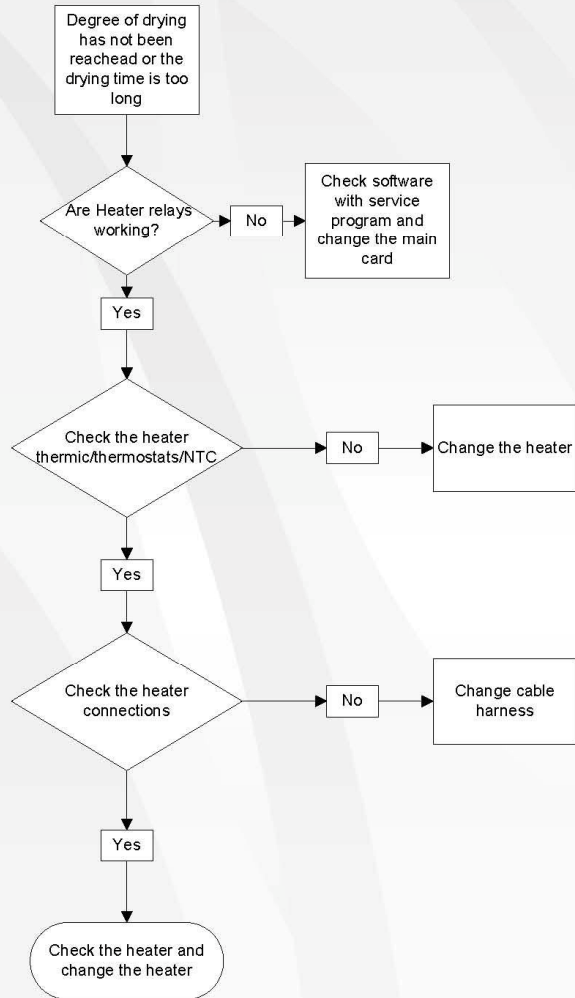
SLC 6L2



LISTO

SECHE LINGE

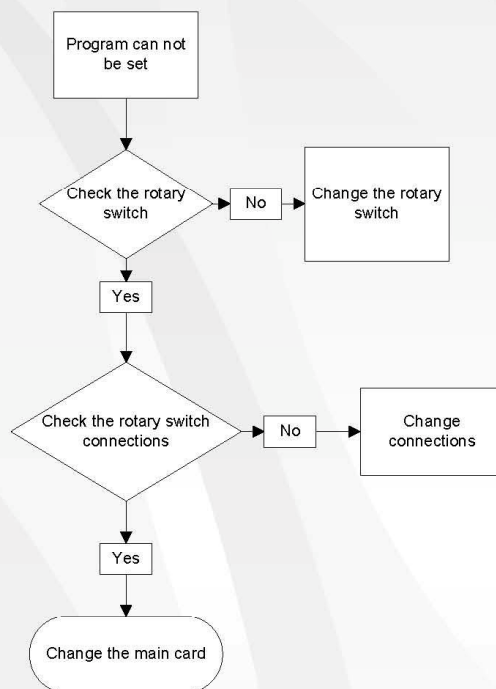
SLC 6L2



LISTO

SECHE LINGE

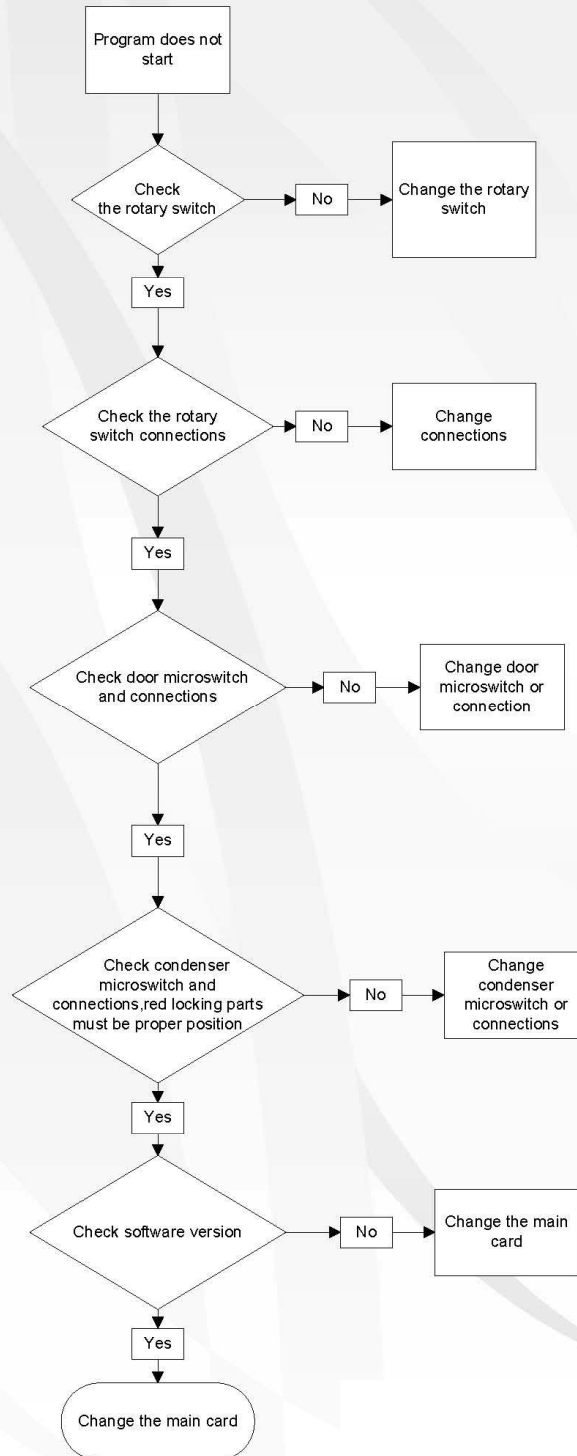
SLC 6L2



LISTO

SECHE LINGE

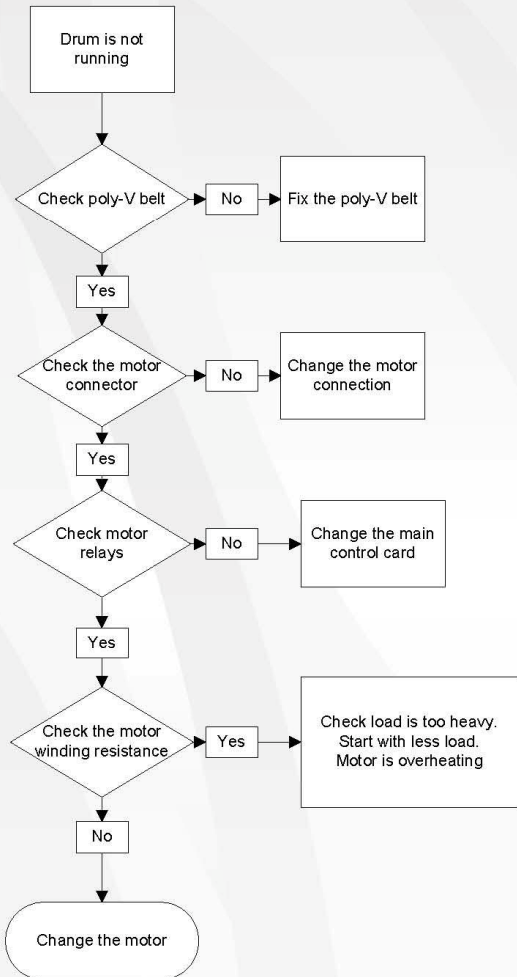
SLC 6L2



LISTO

SECHE LINGE

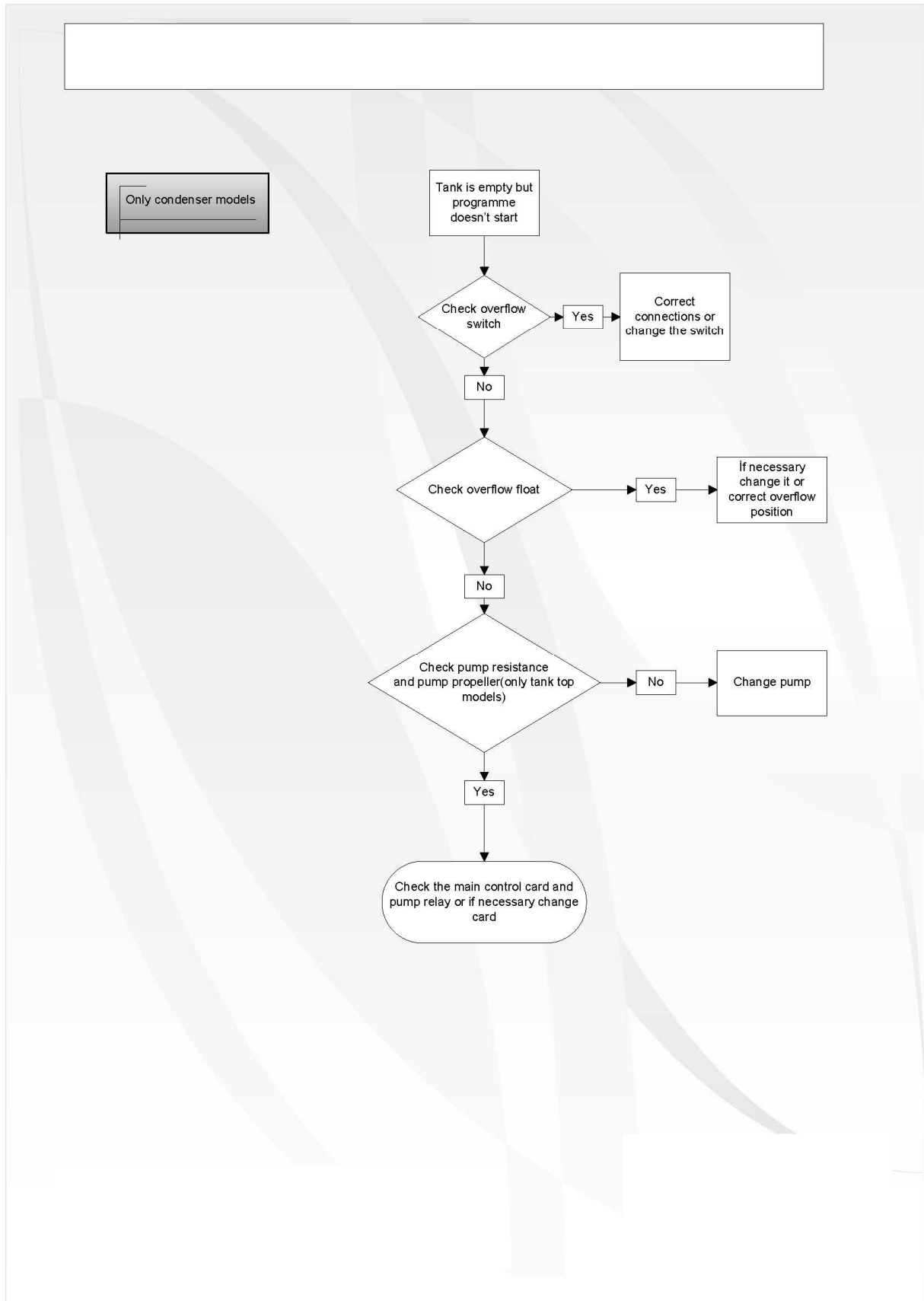
SLC 6L2



LISTO

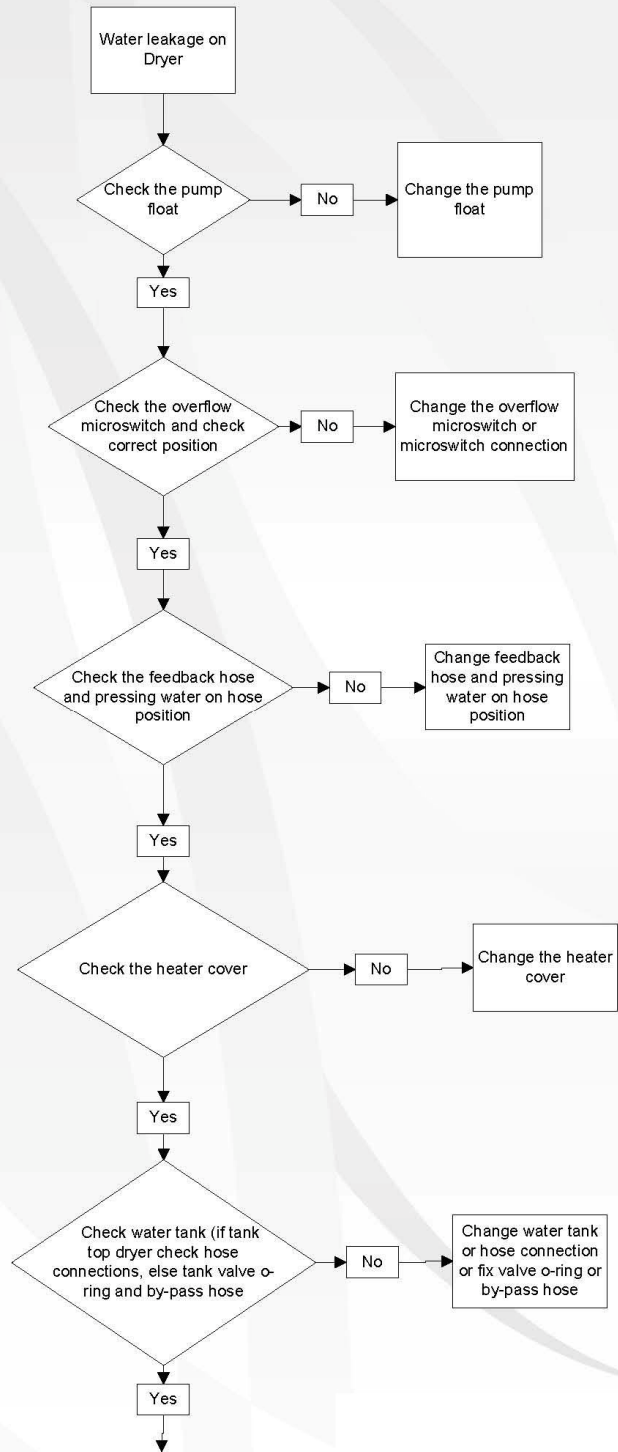
SECHE LINGE

SLC 6L2





1/2

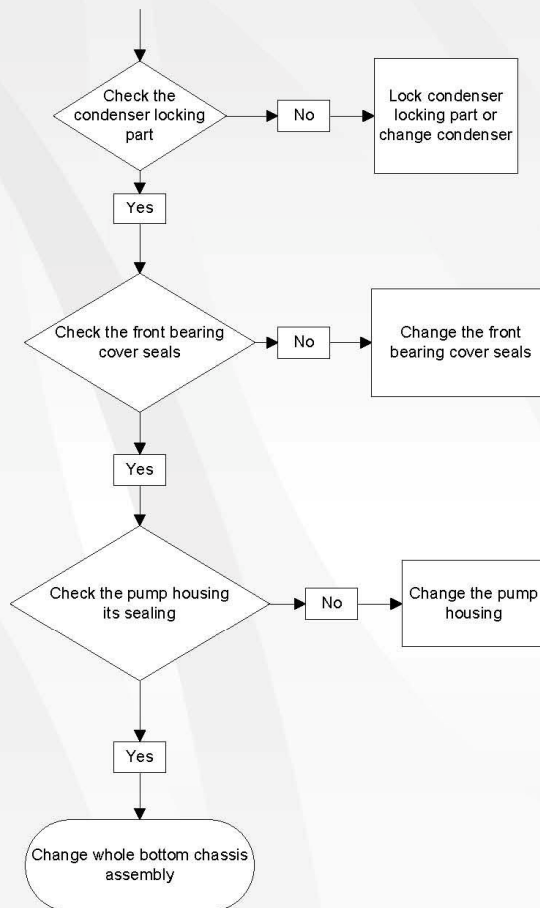


LISTO

SECHE LINGE

SLC 6L2

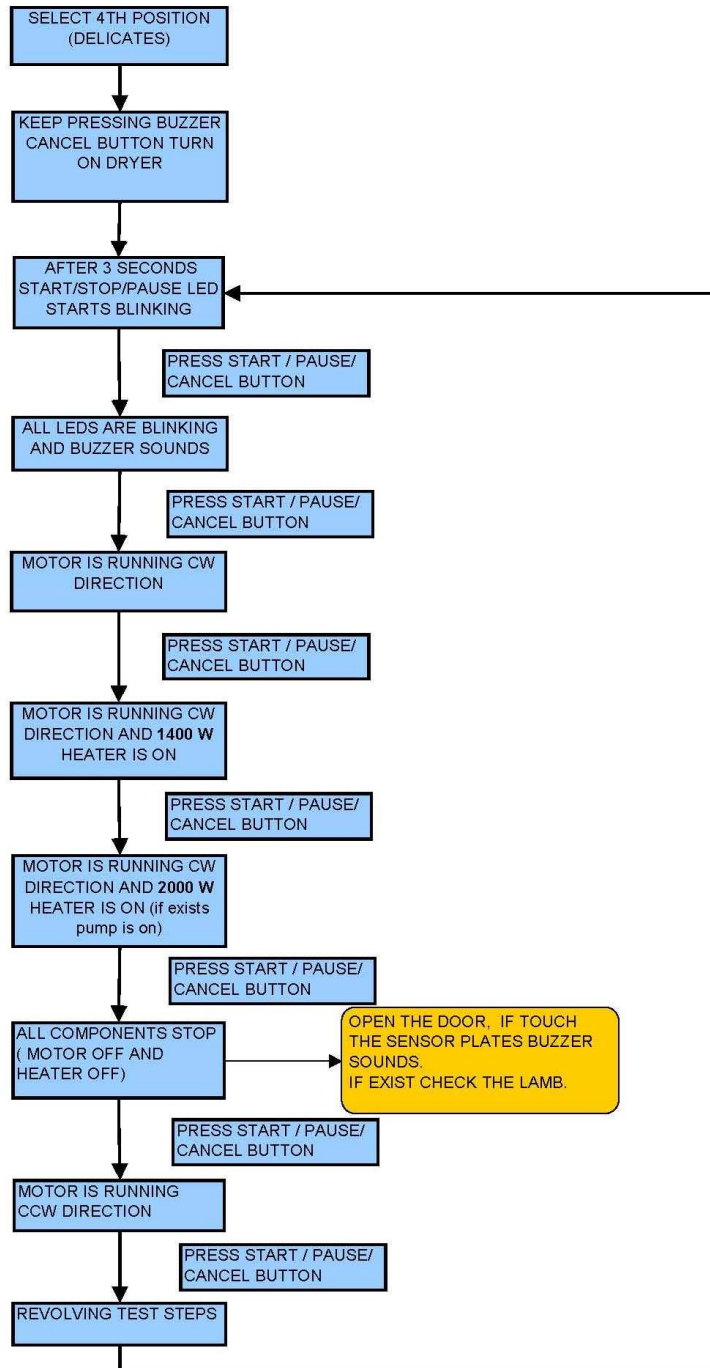
2/2



LISTO

SECHE LINGE

SLC 6L2



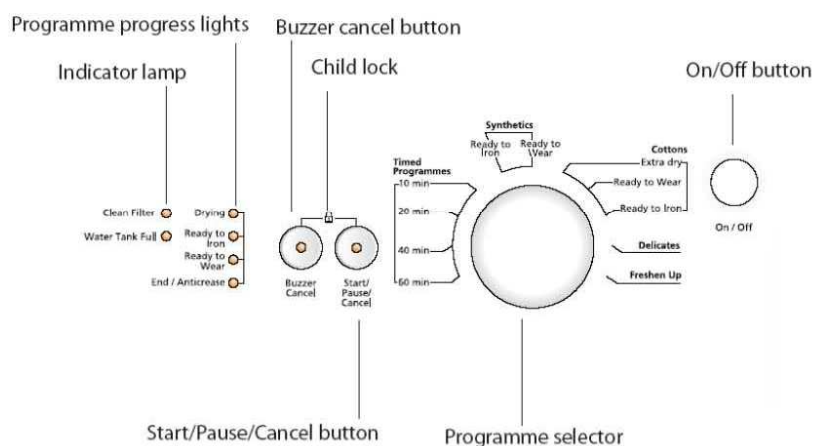


SECHE LINGE

SLC 6L2

Terra Vented&Condenser Sensor Controlled Dryers

1. Plug the electrical connection and be sure dryer is working properly. Turn on dryer. Press **"Start / Stop"** button for a while and restart program. Then cancel the programme by pressing **"Start / Stop"** button 3 sec. Turn off dryer.



2. Adjust the rotary switch to the Delicate program clockwise direction after Cottons programmes.
3. By pressing Buzzer Cancel function button turn on dryer. Wait until **"Start / Stop"** led is blinking.
4. Press **"Start / Stop"** button to follow steps of service program:
 1. All led is blinking.
 2. Controlling leds. All the leds are on and blinking.
 3. Motor is turning anti-clockwise direction.
 4. While motor is turning first level of heater is on. 1400 W (7 A) and pump is on, if exist.
 5. While motor is turning second level of heater is on. 2000 W (9,6 A) and pump is on, if exist.
 6. Motor is stopping. Heaters are off.
 7. Motor is turning clockwise direction.

Continuing pressing **"Start / Stop"** repeats steps 1 to 7.