

65mm

### SOFT GEL 3-DEVICES WIRELESS MOUSE

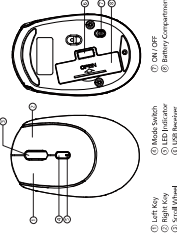
U  
S  
M  
R  
M  
A  
N  
U  
A  
L

#### Warnings

Read this manual and warnings before using this device. Inappropriate use of this device may cause damage to the product or void the warranty.

- Do not expose this product to rain or wet conditions.
- Do not disassemble, repair or modify this product.
- Do not use the product if you are experiencing any of the following symptoms:
  - Overheating
  - Unusual sounds
  - Unusual odors
- Do not drop, to avoid falling product damage.
- Unauthorized disassembly will invalidate the warranty.

#### Overview



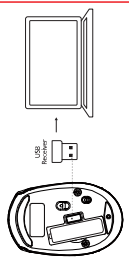
#### Features

- Soft touch, comfortable feeling.
- Low power consumption, longer use time.
- High resolution.
- Anti-rolling, quiet and comfortable.

#### Use Instruction

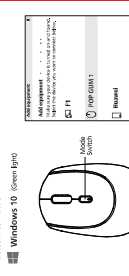
Open the mouse battery cover, put recharge AA battery, toggle the power switch to "ON", the mouse indicator light on "LED".

- Turn on the receiver and connect to the computer or other USB interface device.



#### EN

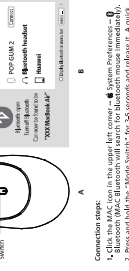
2. Press the "Mode Switching" button to switch to 2.4G mode (the red indicator flashes), and the connection is successful.



#### EN

**Connection steps:**

- Click the "Setup" button in the lower right corner of the computer - Setup window to enter the mouse connection at this point will be successful.
- Press the "Mode Switching" button to switch to Bluetooth mode, the red indicator light flashes, indicating that the Bluetooth mouse has been successfully started.
- Click the "Bluetooth" button in the system tray to search for the Bluetooth mouse, "mouse" will be displayed, click the mouse to automatically pair and connect.



#### EN

**2.4G wireless/bluetooth switching:**  
After connecting 2.4G wireless mode and Bluetooth mode (BT and BT2), you can switch between 2.4G wireless mode and Bluetooth mode by pressing the "Mode Switching" button. Press the mode switch to select the device you want.

**OFF Switching:**  
Press the "Left Key" and "Scroll" at the same time for 5 seconds to switch, there are three speeds: 600 DPI, 1000 DPI and 1600 DPI can switch.



**Frequently Asked Questions**

<b>Flash</b>	<b>Solution</b>
The flashlight is not on	Select the battery, and replace the battery if the battery is incorrect.
Cursor delay	Check the connection between the mouse and the computer, and reconnect it with power and low latency.
Mouse not working	Reset the receiver, or plug in another USB port to test the connection. If the connection is not successful, please connect accordingly. If not, follow the connection steps to reconnect.

#### EN

**Specification**

Wireless technology: RF 2.4G + Bluetooth  
 Resolution: 600/1000/1600 DPI  
 Sensor: Optical sensor  
 Buttons: 3 (Left Key, Right Key, Wheel)  
 Battery type: 1 AA battery  
 Battery life: 12 months (continuous use)  
 Dimensions: 104 x 65 x 41mm

#### EN

**System requirements:** Windows Vista/Windows 7/Windows 8/Windows 10/Windows 11, Mac OS X, or for Linux

**Box Includes**

- Wireless Mouse
- USB Receiver
- User Manual