



BenQ DLP Projector

W2720 (i)

Feature Highlight

- * True 4K UHD (3840 x 2160) 8.3M Pixel resolution
- * 2500lm Brightness 4LED
- * AI PQ for ambient condition
- * BenQ CinematicColor™ 95% DCI-P3 Wide Color Gamut
- * HDR10/HLG/HDR10+
- * HDR Pro™
- * Factory Calibrated Report
- * 1.3X big zoom lens and Vertical lens shift
- * Google certificated android TV dongle with Netflix – Q502



Display

Projection System	DLP
DMD type	0.47"
Native Resolution	4K UHD (3840 x 2160) Resolution
Brightness	2500 ANSI Lumens
Contrast Ratio*	Native 760:1, Infinity (w/ Dynamic Dimming)
Display Color	30 Bits (1.07 billion colors)
Aspect Ratio	Native 16:9 (3 aspect ratio selectable)
Light Source	4LED
Light Source life**	Normal 20000 hrs Economic 30000 hrs SmartEco 20000 hrs

Optical

Throw Ratio	1.15 ~ 1.50 (100° @ 2.5m)
Zoom Ratio	1.3X
Lens	F/# 1.8 - 1.85 mm, f 10.6 (Wide)~13.7(Tele)
Keystone Correction	2D, Auto Vertical & Manual Horizontal ± 30 degree
Projection Offset	100%
LenShift	Vertical ±5%
Projection Size (Clear Focus / Maximum)	40" ~ 120" / 30" ~ 300"

Audio

Built-in Speaker	5W*2
------------------	------

Picture

Picture Mode	*** ISF Disabled: Bright / AI Cinema / Cinema / FILMMAKER MODE / 3D / User / HDR AI Cinema / HDR10 / HDR10+ / HLG **** ISF Enabled: Bright / AI Cinema / Cinema / FILMMAKER MODE / ISF Night / ISF Day
DCI-P3 Coverage (WCG On)	95%

Special Feature

Motion Enhancer	Yes
Local Contrast Enhancer	Yes
ISF	Yes
Fast Mode	Yes (17.9ms @4K 60Hz, 1080p 60Hz, 8.7ms @1080p240Hz, 21ms@1080p120Hz)

Compatibility

Resolution Support	VGA (640 x 480) to 4K UHD (3840 x 2160)
Horizontal Frequency	15K-135KHz
Vertical Scan Rate	23-240Hz
HDTV Compatibility	480i, 480p, 576i, 576p, 720p, 1080i, 1080p, 2160p
Video Compatibility	N/A

Power

Power Consumption(Max/Normal/Eco)	Max 290W, Normal 260W, Eco 220W
Standby Power Consumption	0.5W Max. at 100 ~ 240VAC
Power Supply	VAC 100 ~ 240 (50/60Hz)

Interface

HDMI-1 (HDCP 2.3)	x 1
HDMI-2 (Audio Return+) (HDCP 2.3, CEC/ARC/eARC)	x 1 (5.1/7.1/Dolby Atmos audio pass through)
HDMI-3 (HDCP 2.3)	x 1 (FRL: 4k@120Hz input/1080P@120Hz output)
USB 2.0 Type-A port (Media Reader/Scalar Firmware upgrade)	x 1
USB 2.0 Type-A port (5V/2.5A power supply)	x 1
USB 2.0 Type Mini B (TI Firmware upgrade)	x 1
Audio Out (3.5mm mini jack)	x1
I2V Trigger (3.5mm Jack)	x1
RS232 In (D-sub 9pin, male)	x1
Audio Out (SPDIF)	x1 (5.1 channel audio pass through)
Hidden Space for Q502 ATV dongle	
- HDMI Mini Male cable (HDCP2.2)	x 1
- USB Micro-B Male cable (5V/1.5A Power supply)	x 1
IR Receiver (Front/Top)	x 2

Dimension and Weight

Product Dimensions (WxHxD)	420 x 143 x 305 mm
Product Weight	6.5 kg

Operation Condition

Noise Level(Normal/Eco) 28/26 dBA

Operating Temperature 0~40 degrees (Celcius)

Accessories

Accessories (Standard) Remote Control
- VV2720i (RCI074: 5JJR406.001)
Android TV Dongle Q502 (5AJH328.01A)
Power Cord (by region) x 1 (1.8m)
User Manual E-edition (27L)
Quick Start Guide (21L)
Color Calibration Report
Warranty Card (by region)
Regulatory Statements
Service QR Code Sticker
Lens cover x 1

Accessories (Optional) Universal Wall Mount (T/R 0.3)

OSD

On Screen Display Language Arabic/Bulgarian/ Croatian/ Czech/ Danish/ Dutch/ English/ Finnish/ French/ German/ Greek/ Hindi/ Hungarian/ Italian/ Indonesian/ Japanese/ Korean/ Norwegian/ Polish/ Portuguese/ Romanian/ Russian/ Simplified Chinese/Spanish/ Swedish/ Turkish/ Thai/ Traditional Chinese (28 Languages)

Environment Notice

* The Contrast is measure by Full On Full Off standard.

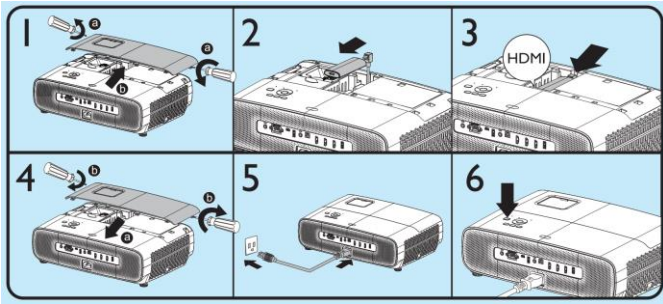
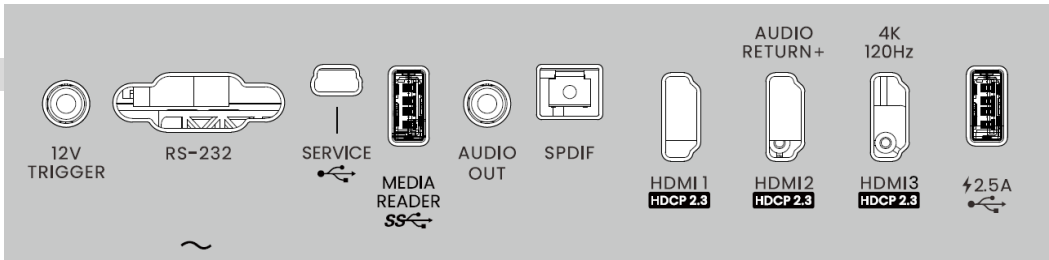
** Light life results will vary depending on environmental conditions and usage. Actual product's features and specifications are subject to change without notice.

*** Default picture mode is **AI Cinema**

**** When ISF is enable, default picture mode is **ISF Night**.



Connectivity

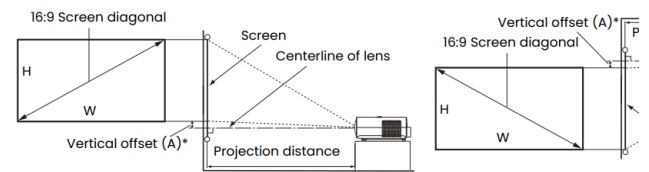


No	I/O
1	SPDIF audio output (5.1 channel audio pass through)
2	Audio Out (3.5mm jack)
3	USB Type-A (Media Reader/Scalar Firmware upgrade)
4	HDMI-1 (HDCP2.3)
5	HDMI-2 (HDCP2.3) (Audio Return+) (5.1/7.1/Dolby Atmos audio pass through)
6	HDMI-3 (HDCP2.3) (FRL: 4k@120Hz input/1080P@120Hz output)
7	USB Type-A (2.5A power supply)
8	USB (Type Mini B)
9	RS232 In (D-sub 9pin, male)
10	DC 12V Trigger
11	Hidden Space for ATV dongle
	- HDMI Male cable (2.0b, HDCP2.2)
	- Micro USB Male cable (Power supply 5V/1.5A)

Installation

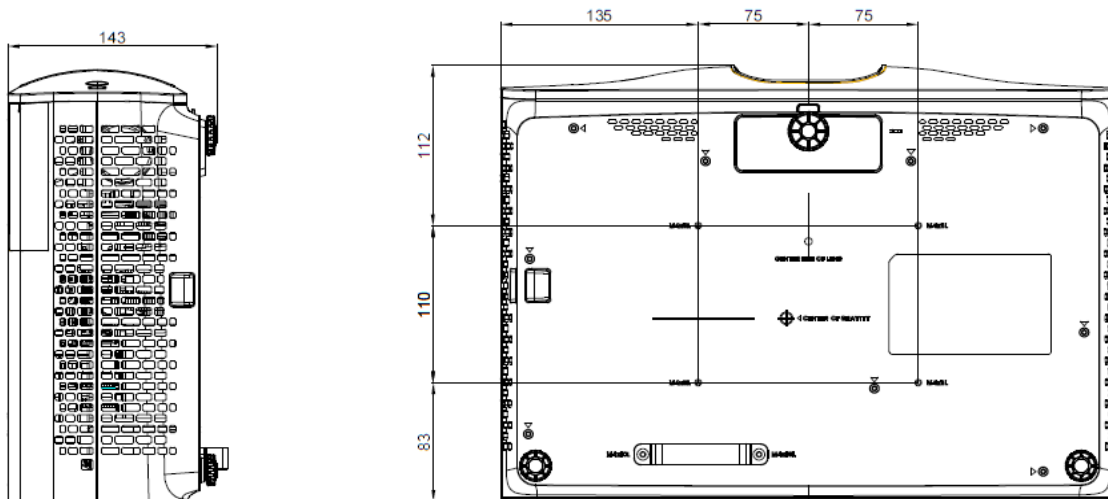
Screen size				Distance from screen (mm)			*Vertical offset (A) (Lowest/highest lens position) (mm)
Diagonal		H (mm)	W (mm)	Min length (max. zoom)	Average	Max length (min. zoom)	
Inch	mm						
30	762	374	664	744	860	977	37
40	1016	498	886	999	1154	1309	50
50	1270	623	1107	1253	1447	1641	62
60	1524	747	1328	1508	1740	1973	75
80	2032	996	1771	2017	2327	2637	100
95	2413	1183	2103	2399	2767	3135	118
100	2540	1245	2214	2526	2914	3301	125
110	2794	1370	2435	2781	3207	3633	137
120	3048	1494	2657	3035	3500	3965	149
130	3302	1619	2878	3290	3794	4297	162
140	3556	1743	3099	3545	4087	4629	174
150	3810	1868	3321	3799	4380	4961	187
160	4064	1992	3542	4054	4674	5293	199
170	4318	2117	3763	4308	4967	5626	212
180	4572	2241	3985	4563	5260	5958	224
190	4826	2366	4206	4817	5554	6290	237
200	5080	2491	4428	5072	5847	6622	249
250	6350	3113	5535	6345	7314	8282	311
300	7620	3736	6641	7618	8780	9942	374

The screen aspect ratio is 16:9 and the projected picture is in a 16:9 as



- *The vertical offset value is the vertical distance from the bottom edge of the projector (when placed on a table, diagram on the left), or top edge of the image (when the projector is mounted, diagram on the right) to the centerline of lens.
- Due to the lens optical characteristics, every projector has its vertical offset value normally gets larger while the projection distance increases.

Dimensions/Ceiling/Wall mount installation diagram



Feature icons



Color Depth

Display format (refresh rate)	Chroma subsampling	8 Bit	10 Bit
4K/60p (60 Hz)	04:04:04	V	
	04:02:02	V	
	04:02:00	V	
4K/60p (50 Hz)	04:04:04	V	
	04:02:02	V	
	04:02:00	V	
4K/30p (30 Hz)	04:04:04	V	
	04:02:02	V	
	04:02:00	V	
4K/24p (24 Hz)	04:04:04	V	
	04:02:02	V	
	04:02:00	V	

