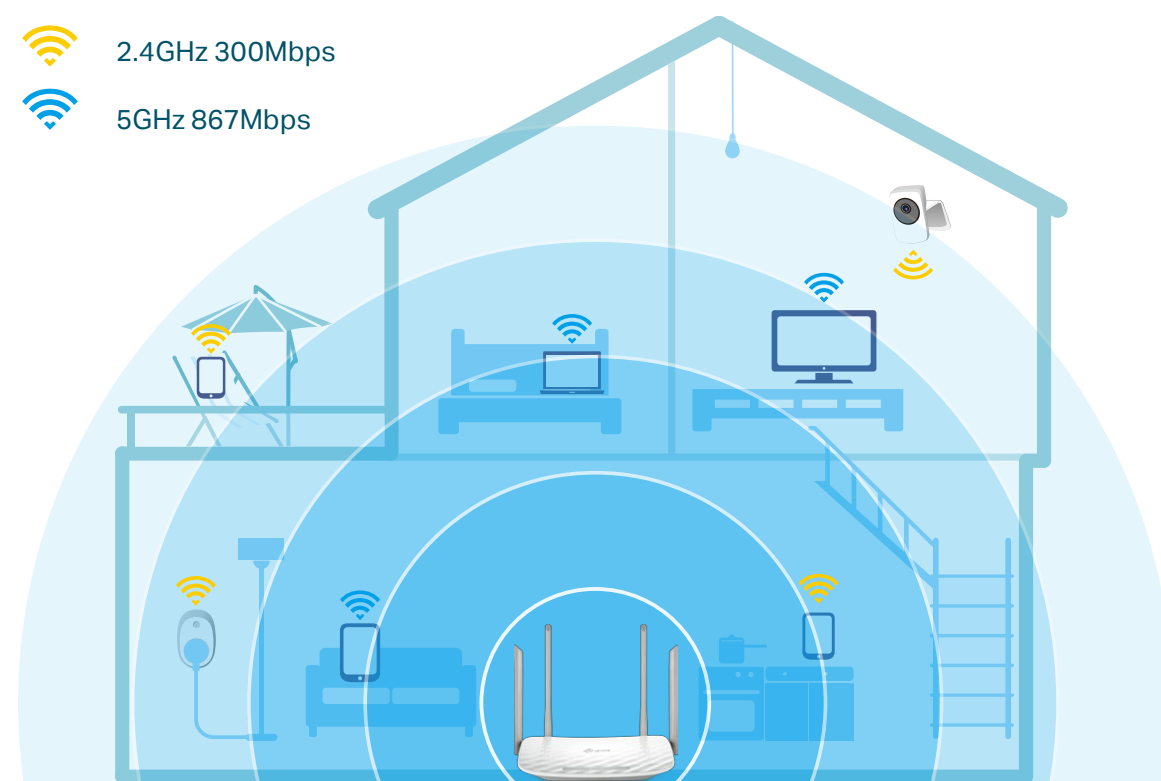




# Points clés

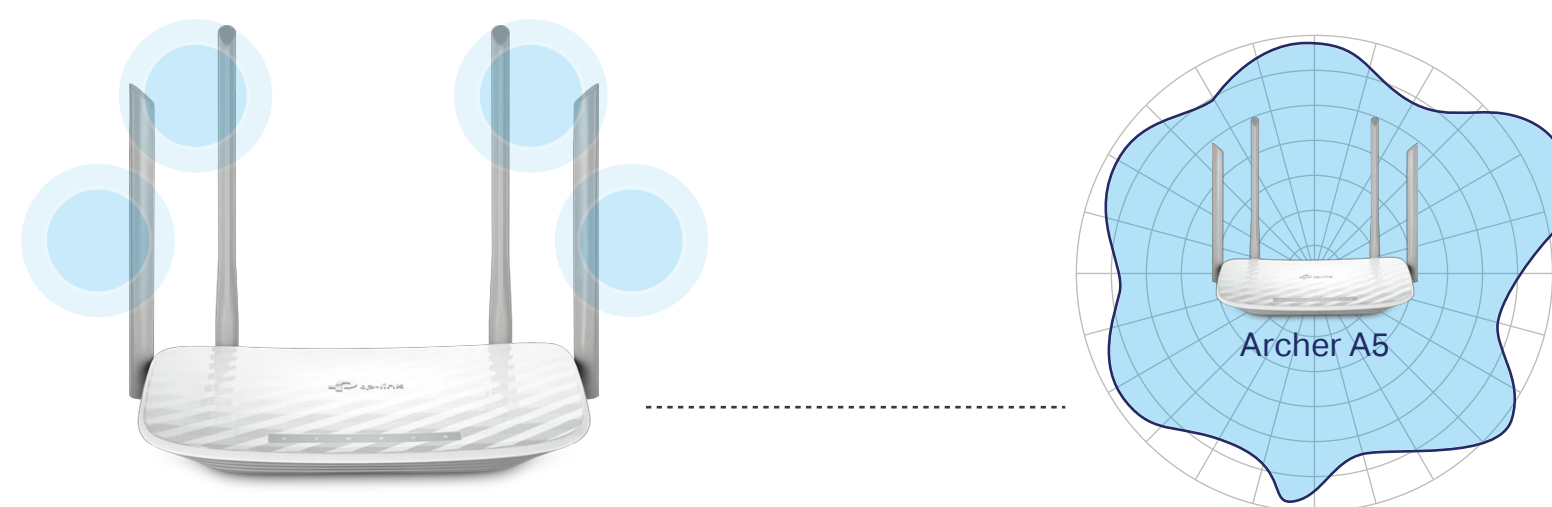
## Household Wi-Fi at Streaming Speeds

Press play and forget about buffering with the Archer A5. The Wireless AC router creates high-speed AC1200 Wi-Fi so you can game online and watch movies in HD at the same time. Thanks to dual Wi-Fi bands, you can run more of your devices at the same time without interruption. The strong 2.4GHz (300Mbps) Wi-Fi band is perfect for sending emails, browsing the web, and listening to music. The crystal 5GHz Wi-Fi band reaches 867Mbps so you can game online and stream in HD simultaneously.



## Innovative Antenna Design for Maximum Coverage

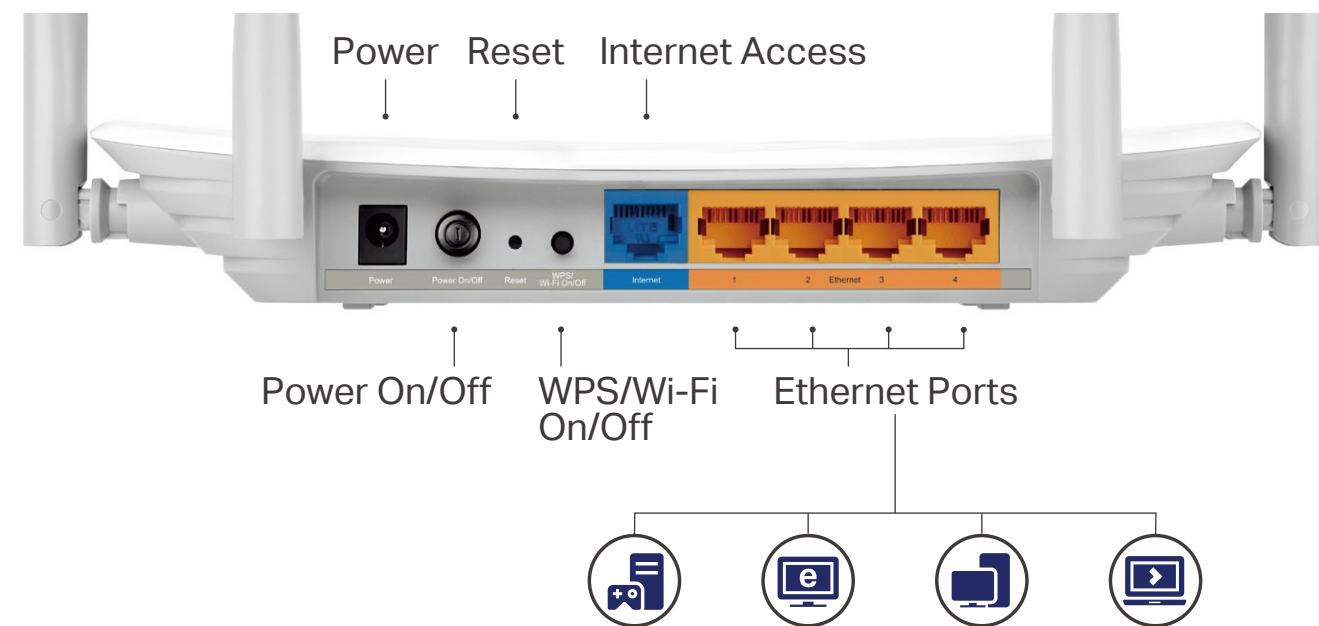
Four antennas make all of your connections more efficient and stable. Advanced antenna technology increases the receiving sensitivity to enlarge Wi-Fi coverage for your home.



# Points clés

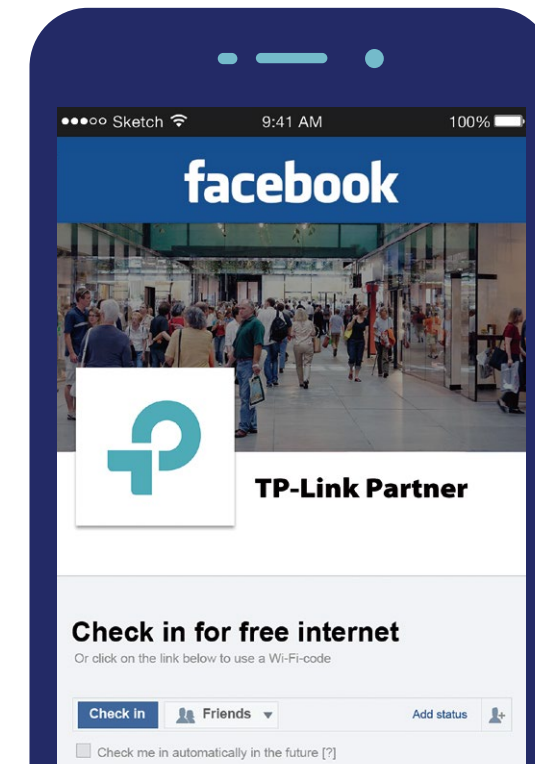
## Fast Ethernet

Enjoy fast, reliable wired connections for gaming and streaming in the best quality.



## Facebook Wi-Fi: Efficient Guest Authentication

Captive portal presents devices with a convenient, user-friendly authentication method to grant Wi-Fi access. Easily share your facebook page to anyone who connects to your network.

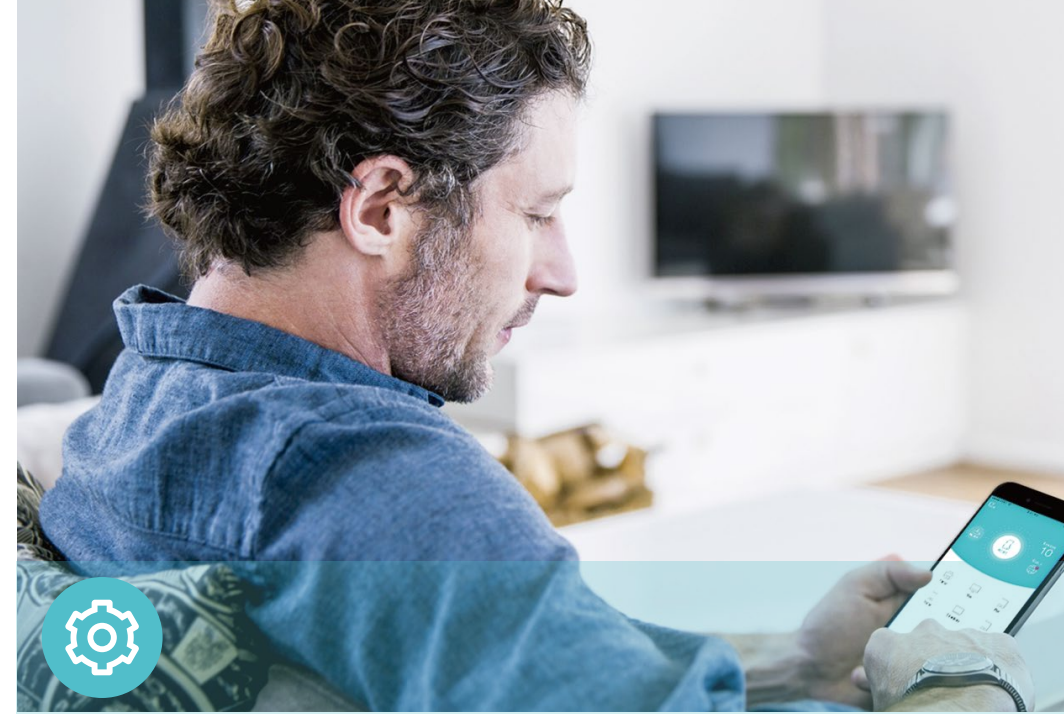


# Fonctions



## Reliability

- Ultimate Wireless Speed – 300Mbps Wi-Fi speed on 2.4GHz and 867Mbps Wi-Fi speed on 5GHz meet your daily internet needs
- Support 802.11 ac – Provide a data transfer rate 3 times faster than 802.11n for each stream
- Bandwidth Control – Assign your preferred devices with more bandwidth
- IPTV – Support IGMP Proxy/Snooping, Bridge and Tag VLAN to optimize IPTV streaming



## Ease of Use

- Intuitive Web UI – Ensure quick and simple installation without hassle
- Fast Encryption – Make secure wireless connection quickly and easily with the push of a WPS button
- Hassle-free Management with Tether App – Let you manage your network settings with your smartphone
- Facebook Wi-Fi – Provide efficient guest authentication and share your Facebook page to anyone who connects to your Wi-Fi.



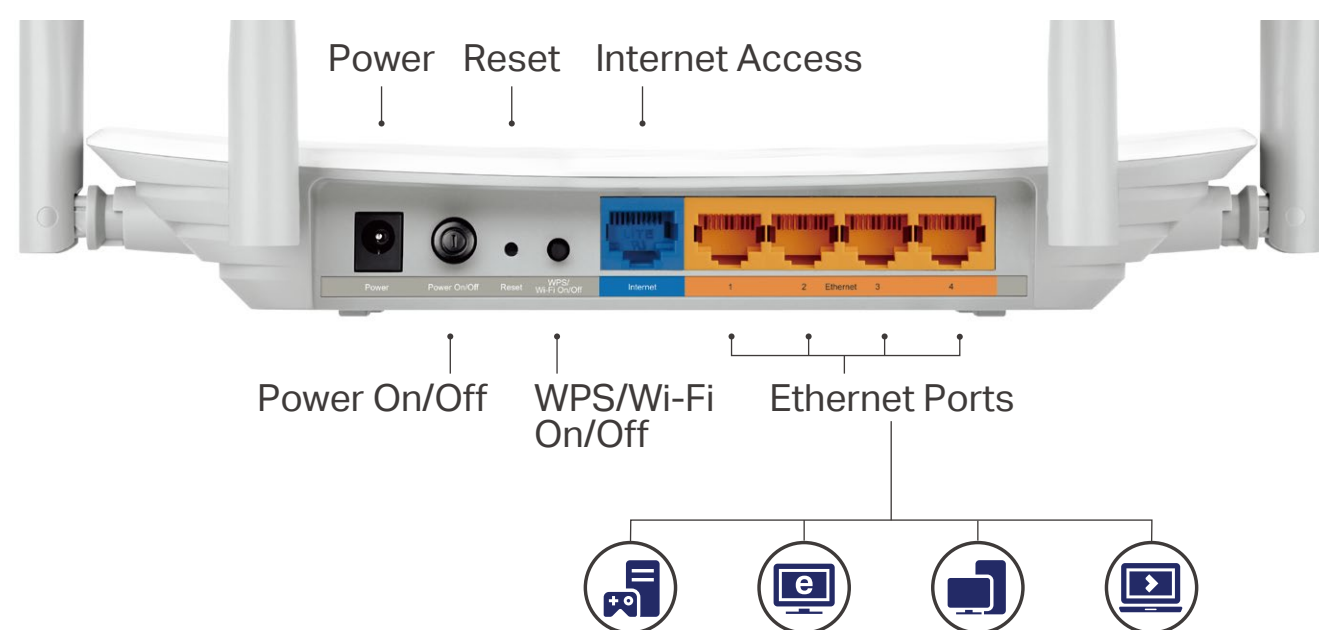
## Security

- Active Defense – WPA-PSK/WPA2- PSK encryptions provide active protection against security threats
- Guest Network – Provide separate access for guests while securing the home network
- Access Control – Establish a whitelist or blacklist to allow or block certain devices from accessing the internet
- Parental Controls – Manage when and how connected devices can access the internet

# Caractéristiques

## Matériel

- Ports Ethernet : 4\*ports LAN 10/100 Mbps,1\*10/100Mbps WAN Port
- Buttons: Reset Button, Power On/Off Button, WPS/Wi-Fi On/Off Button
- Antennas: 4 Fixed Omni Directional Antennas
- External Power Supply: 9VDC/0.85A
- Dimensions (W x D x H): 9.1 x 5.7 x 1.4 in. (230 x 144 x 35mm)



## WiFi

- Wireless Standards: IEEE 802.11ac/n/a 5GHz, IEEE 802.11b/g/n 2.4GHz
- Fréquence: 2.4 GHz et 5 GHz
- Signal Rate:
  - 5 GHz: jusqu'à 867 Mbps
  - 2.4 GHz: jusqu'à 300 Mbps
- Reception Sensitivity:
  - 5 GHz:
    - 11a 54M:-77dBm;
    - 11ac VHT20 MCS8:-72dBm;
    - 11ac VHT40 MCS9:-68 dBm;
    - 11ac VHT80 MCS9:-63 dBm;
  - 2.4 GHz:
    - 11g 54M:-76 dBm;
    - 11n HT20 MCS7:-74 dBm;
    - 11n HT40 MCS7:-71 dBm;
- Wireless Function: Enable/Disable Wireless Radio, WDS Bridge, WMM, Wireless Schedule, Wireless Statistics
- Wireless Security: 64/128-bit WEP,WPA / WPA2,WPA-PSK/ WPA2-PSK encryption

# Caractéristiques

## Logiciel

- WAN Type: Dynamic IP, Static IP, PPPoE, IPTV, PPTP (Dual Access), L2TP (Dual Access), Bigpond
- DHCP: Server, DHCP Client List, Address Reservation
- Quality of Service: WMM, Bandwidth Control
- Port Forwarding: Virtual Server, Port Triggering, UPnP, DMZ
- Dynamic DNS: DynDns, NO-IP, Comexe
- Access Control: Parental Controls, Local Management Control, Host List, White List, Black List
- Firewall Security: DoS, SPI Firewall, IP Address Filter/MAC Address Filter, IP and MAC Address Binding
- Protocols: IPv4, IPv6
- Management: Access Control, Local Management, Remote Management
- Guest Network: 2.4GHz guest network, 5GHz guest network, Facebook Wi-Fi

## Autres

- Certification  
CE, RoHS
- System Requirements  
Microsoft Windows 10/8.1/8/7/Vista/XP/2000/NT/98SE, MAC OS, NetWare, UNIX or Linux  
Internet Explorer 11, Firefox 12.0, Chrome 20.0, Safari 4.0, or other Java-enabled browser  
Cable or DSL Modem  
Subscription with an internet service provider (for internet access)
- Environment  
Operating Temperature: 0°C~40°C (32°F ~104°F)  
Storage Temperature: -40°C~70°C (-40°F ~158°F)  
Operating Humidity: 10%~90% non-condensing  
Storage Humidity: 5%~90% non-condensing
- Package Contents  
Wireless Router Archer A5  
Power Adapter  
RJ45 Ethernet Cable  
Quick Installation Guide



For more information, please visit

<http://www.tp-link.com/en/products/details/Archer-A5.html>

or scan the QR code left

Specifications are subject to change without notice. TP-Link is a registered trademark of TP-Link Technologies Co., Ltd. Other brands and product names are trademarks or registered trademarks of their respective holders. No part of the specifications may be reproduced in any form or by any means or used to make any derivative such as translation, transformation, or adaptation without permission from TP-Link Technologies Co., Ltd. Copyright ©2018 TP-Link Technologies Co., Ltd. All rights reserved.

\*Maximum wireless signal rates are the physical rates derived from IEEE Standard 802.11 specifications. Actual wireless data throughput and wireless coverage are not guaranteed and will vary as a result of 1) environmental factors, including building materials, physical objects, and obstacles, 2) network conditions, including local interference, volume and density of traffic, product location, network complexity, and network overhead, and 3) client limitations, including rated performance, location, connection, quality, and client condition.

[www.tp-link.com/fr](http://www.tp-link.com/fr)

TP-Link AC1200 Wireless Dual Band Router Archer A5