



300 Mbps Wi-Fi 4G LTE Router

Wi-Fi Where You Need It



TL-MR100

4G 4G(TDD&FDD)/
3G Compatible

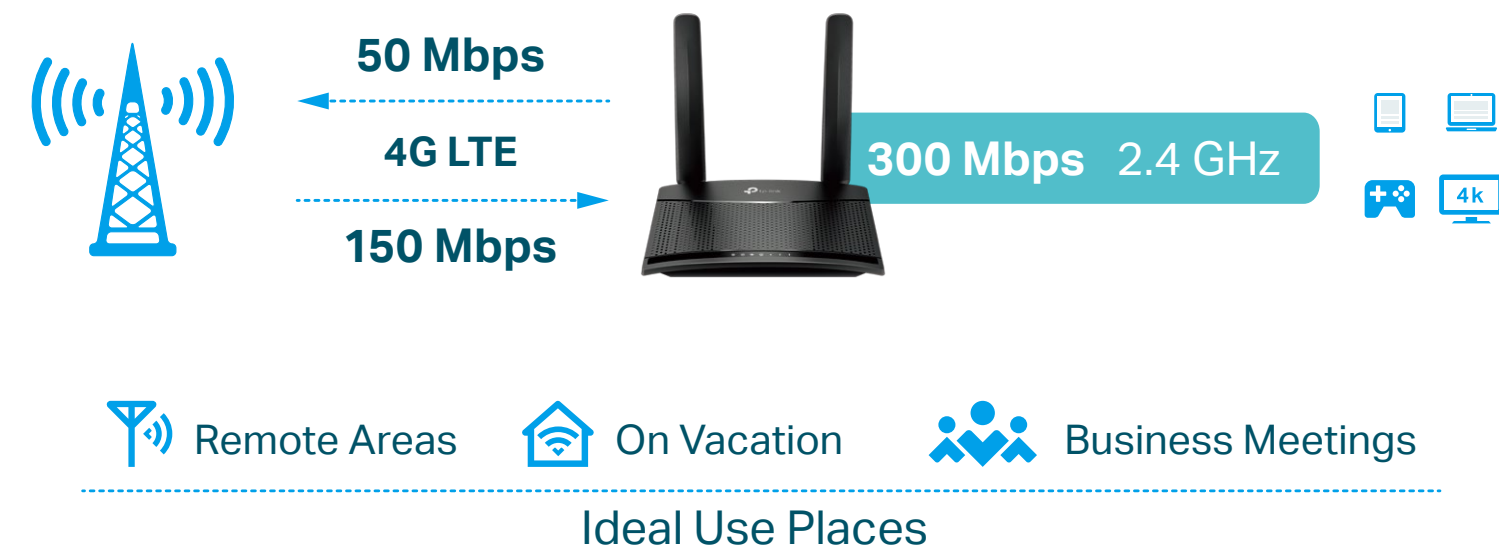
300 Mbps
Wi-Fi Speed

Supports Up to
32 Devices

Highlights

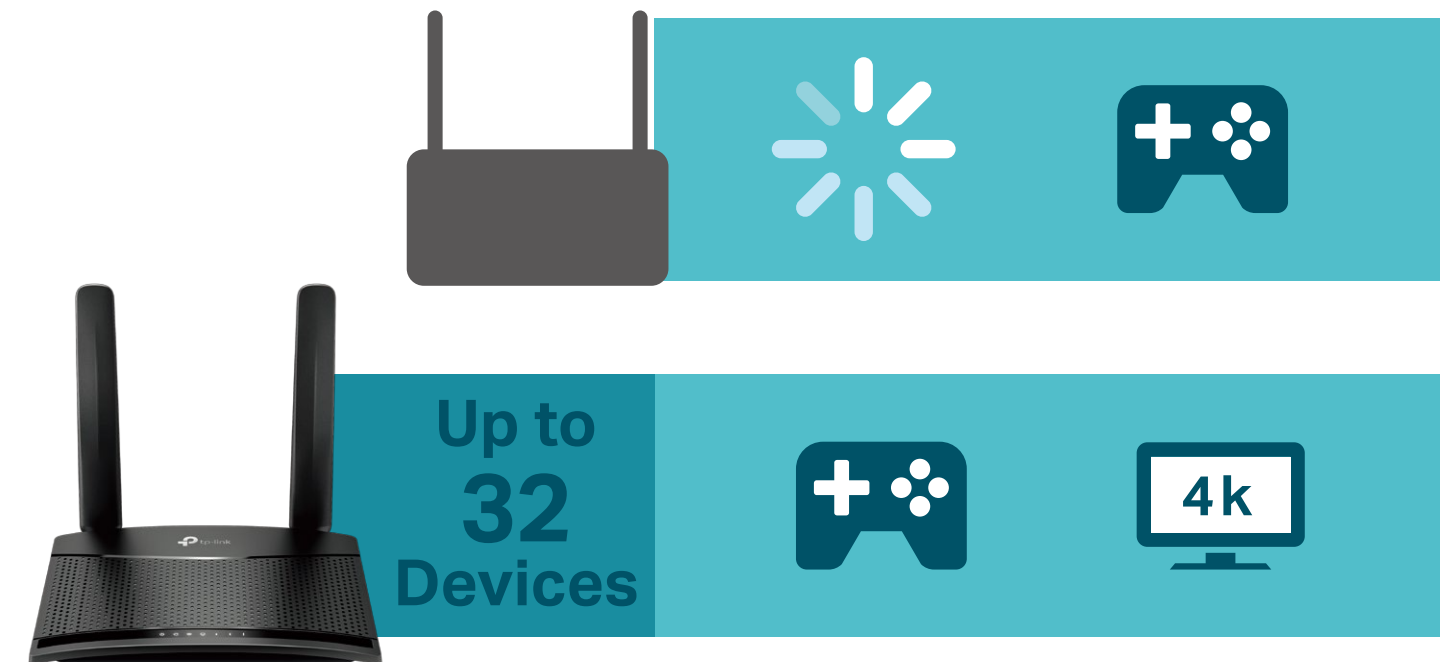
Superfast 4G LTE Speed for Reliable Wi-Fi

The TL-MR100 uses 4G LTE technology to achieve speeds of up to 150 Mbps download and 50 Mbps upload. It also shares a Wi-Fi network with maximum speed of 300 Mbps on 2.4 GHz for gaming, streaming, and more.



Supports Up to 32 Devices

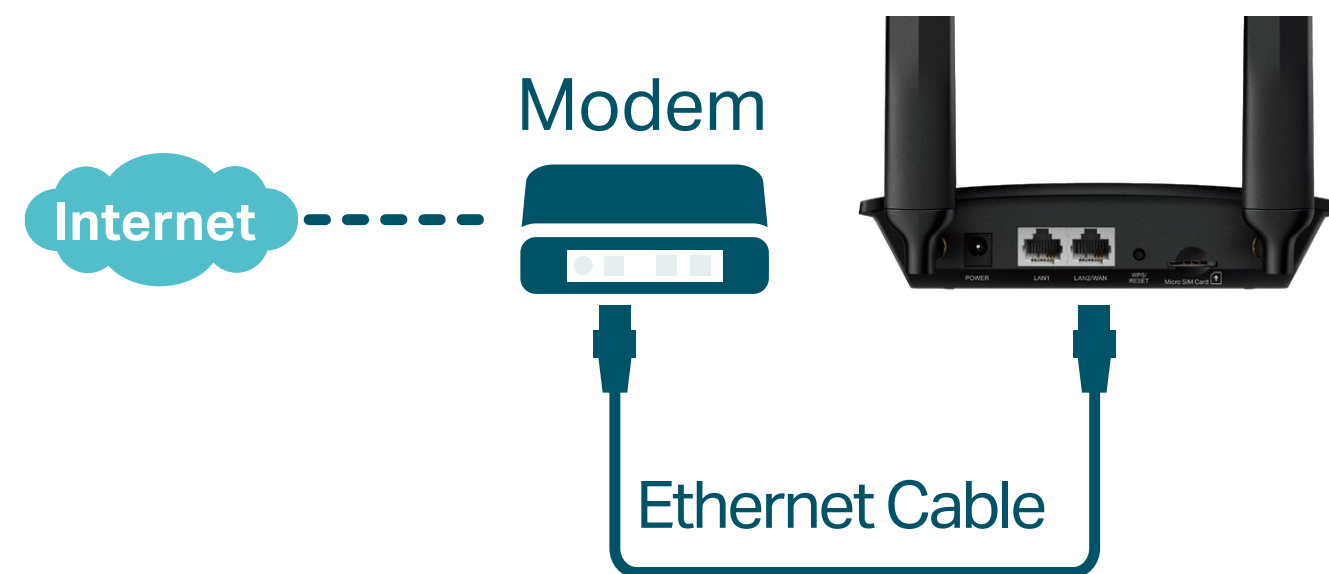
Easily share a 3G/4G connection. Connect up to 32 wireless devices with ease while ensuring dependable network stability.



Highlights

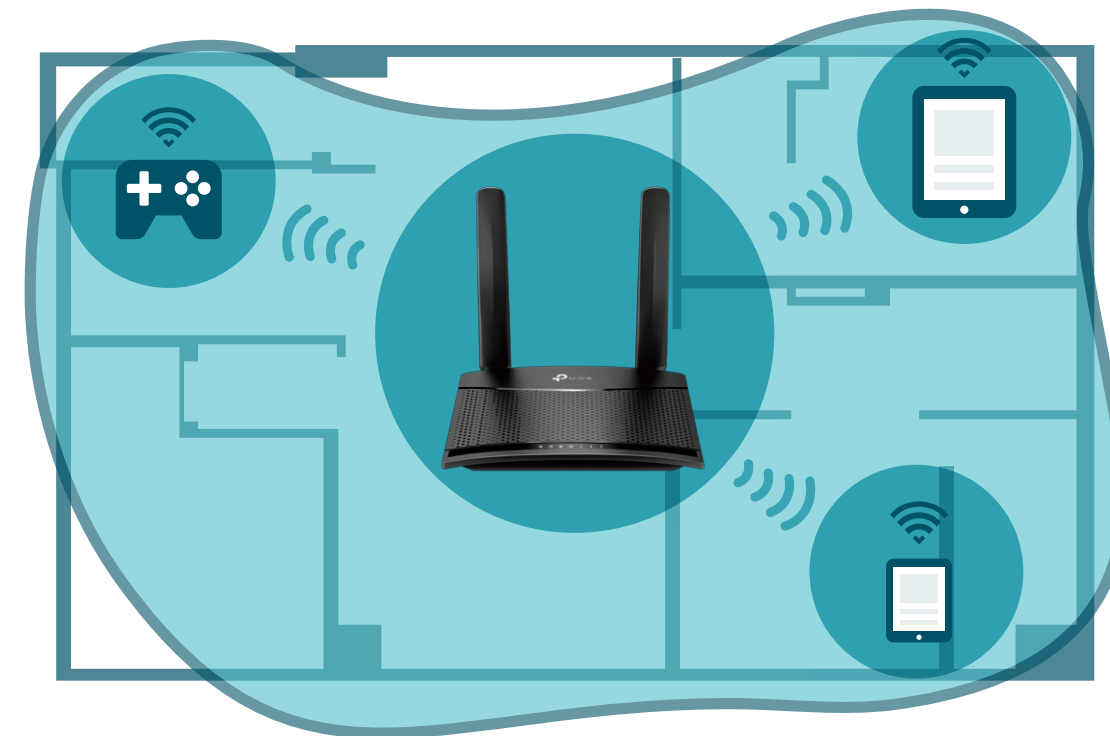
Available WAN Connection Backup

With a fully functional WAN/LAN port, TL-MR100 can work as a router which is compatible with cable, fiber, and DSL modems.

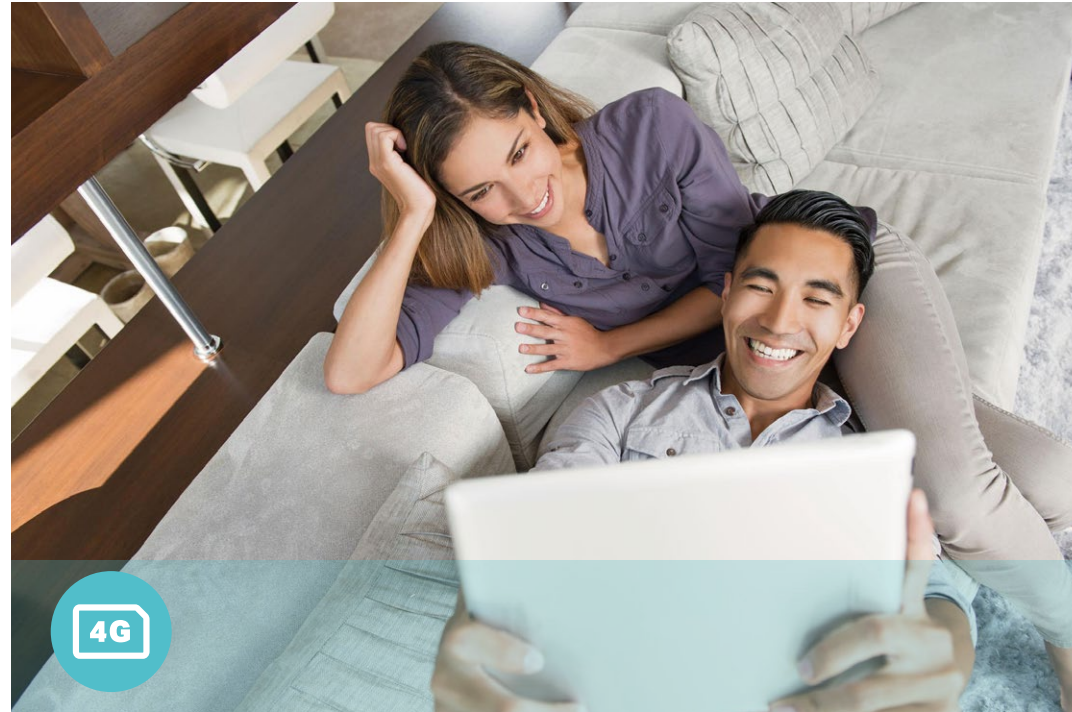


Design for Maximum Network Coverage

Advanced LTE antennas make efficient and stable connections to every device. Power Amplifier and Low Noise Amplifier boost sending and receiving capabilities, creating a wide-coverage Wi-Fi network for your home.



Features



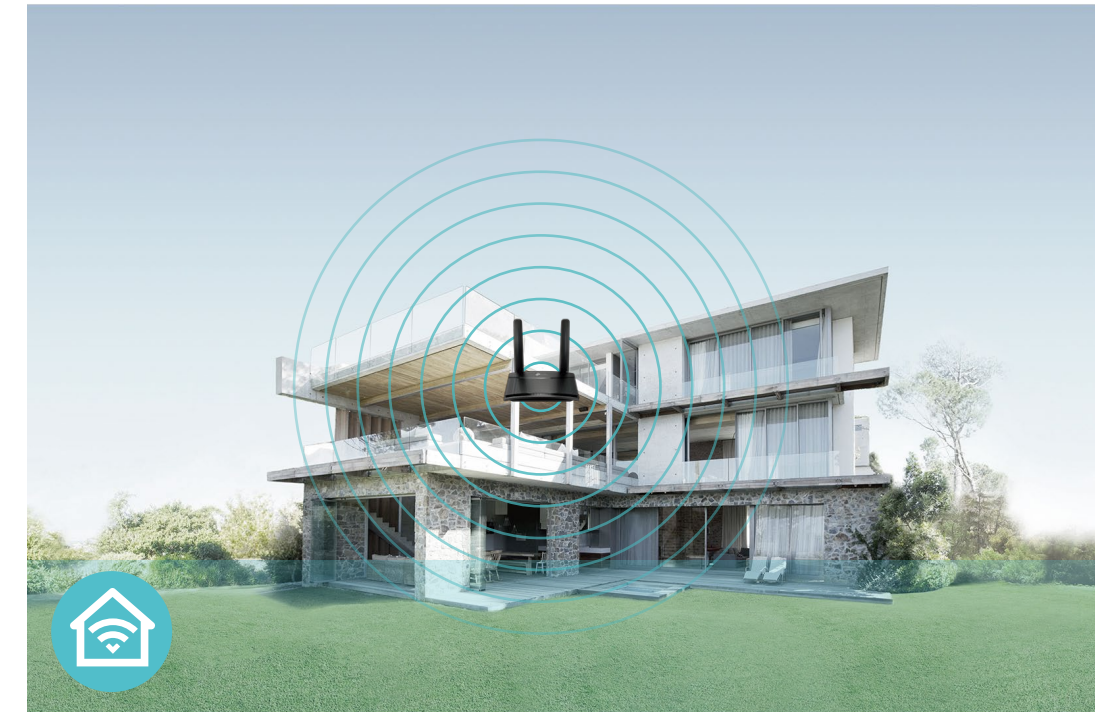
4G LTE

- 4G LTE – Ideal for cutting-edge 4G LTE network
- Faster Connection – Download Speed 150 Mbps + Upload Speed 50 Mbps
- Backward Compatible – Compatible with 3G/4G network



Wi-Fi Speed

- 300 Mbps Wireless Speed – 300 Mbps Wi-Fi allows stable speed for wireless activities, such as streaming, browsing and posting social media



Wi-Fi Range

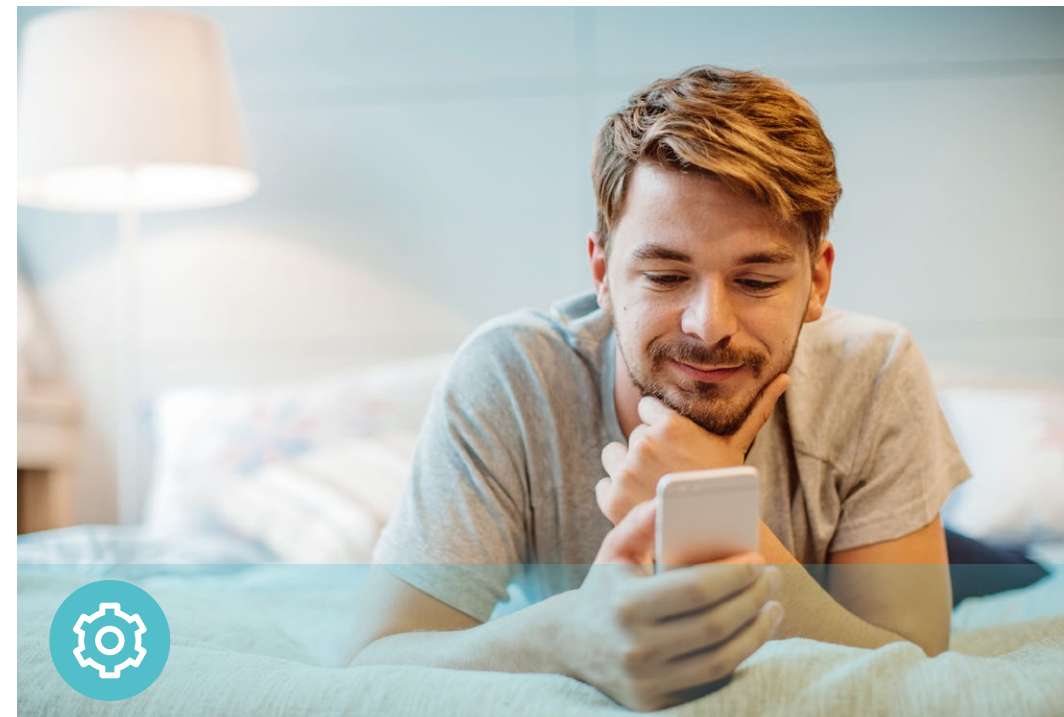
- Great Coverage – Better coverage with advanced LTE antennas

Features



Reliability

- Superior Stability – Powerful processor enables you to connect up to 32 wireless devices with ease
- WAN Connection Backup – Works as a router to provide backup internet connection



Ease of Use

- Intuitive Web UI – Ensures quick and simple installation without hassle
- Fast Encryption – One-touch WPA wireless security encryption with the WPS button



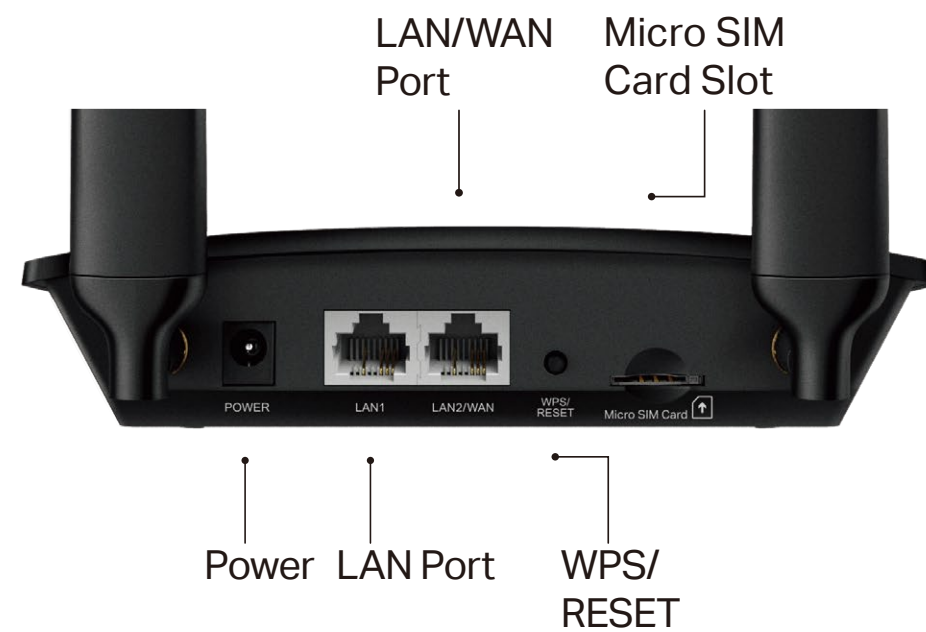
Security

- Guest Network – Keeps your main network secure by creating a separate network for friends and visitors
- Access Control – Establishes a whitelist or blacklist to allow or restrict certain devices to access the internet
- Encryptions for Secure Network – WPA-PSK and WPA2-PSK encryptions provide active protection against security threats

Specifications

Hardware

- LTE: Download Speed 150 Mbps + Upload Speed 50 Mbps
- Antennas: 2 Detachable External 4G LTE Antennas
- Ports: 1 10/100 Mbps LAN/WAN + 1 10/100 Mbps LAN
- Dimensions: 6.06×4.49×1.42 in (154×114×36 mm)
- External Power Supply: 9V/0.85A



Wireless

- Network Type
 - 4G: FDD-LTE: B1/B3/B5/B7/B8/B20 (2100/1800/850/2600/900/800 MHz)
 - TDD-LTE: B38/B40/B41 (2600/2300/2500 MHz)
 - 3G: DC-HSPA+/HSPA/UMTS: B1/B5/B8 (2100/850/900 MHz)
- Wireless Standards: IEEE 802.11b/g/n
- Frequency: 2.4 GHz
- Signal Rate: 300 Mbps
- EIRP (CE): < 20 dBm (2.4 GHz)
- Reception Sensitivity:
 - 11g 54M: -74 dBm
 - 11n HT20: -71 dBm
 - 11n HT40: -68 dBm
- Wireless Function: Enable/Disable Wireless Radio, Wireless Schedule, WMM, Wireless Statistics
- Wireless Security: 64/128-bit WEP, WPA/WPA2, WPA-PSK/WPA2-PSK encryptions

Specifications

Software

- Operating Modes: 3G/4G Router, Wireless Router
- WAN Type: Dynamic IP/Static IP/PPPoE/PPTP(Dual Access)/L2TP(Dual Access)
- DHCP: Server, DHCP Client List, Address Reservation
- Port Forwarding: ALG, Virtual Server, Port Triggering, UPnP, DMZ
- Dynamic DNS: DynDns, NO-IP
- Security: IPv4 SPI Firewall, IP and MAC Address Binding
- Protocols: IPv4, IPv6
- Management: Local Management, Remote Management
- Administration: Upgrade Firmware, Factory Default, System Log, Diagnostic Tools
- Guest Network: 2.4 GHz Guest Network

Others

- Certification:
CE, RoHS
- Requirements:
Microsoft Windows 98SE/NT/2000/XP/Vista™/7/8/8.1/10, MAC OS, NetWare, UNIX or Linux

Internet Explorer 11, Firefox 12.0, Chrome 20.0, Safari 4.0, or other Java-enabled browser

Micro SIM Card
- Environment:
Operating Temperature: 0°C~40°C (32°F ~104°F)
Storage Temperature: -40°C~70°C (-40°F ~158°F)

Operating Humidity: 10%~90% non-condensing
Storage Humidity: 5%~90% non-condensing
- Package Contents
300 Mbps Wireless N 4G LTE TL-MR100

Power Adapter

RJ45 Ethernet Cable

Quick Installation Guide



For more information, please visit

https://www.tp-link.com/products/details/?model=TL-MR100_V1

or scan the QR code left

Attention: This device may only be used indoors in all EU member states and EFTA countries.

Specifications are subject to change without notice. TP-Link is a registered trademark of TP-Link Technologies Co., Ltd. Other brands and product names are trademarks or registered trademarks of their respective holders. Copyright ©2019 TP-Link Technologies Co., Ltd. All rights reserved.

*Maximum wireless signal rates are the physical rates derived from IEEE Standard 802.11 specifications. Actual wireless data throughput and wireless coverage, and number of connected devices are not guaranteed and will vary as a result of network conditions, AP limitations, and environmental factors, including building materials, obstacles, volume and density of traffic, and AP location.