

Quick Start Guide

Download the **full user manual** at:
www.philips.com/support and register your product for further support



Screeno Innovation SA
 1131 - Tolochenaz - Switzerland
www.philips.com/welcome
philips.projector.eu@screeno.com

Euro Repair Center, Europa-Allee-77,
 54343 Föhren, Germany

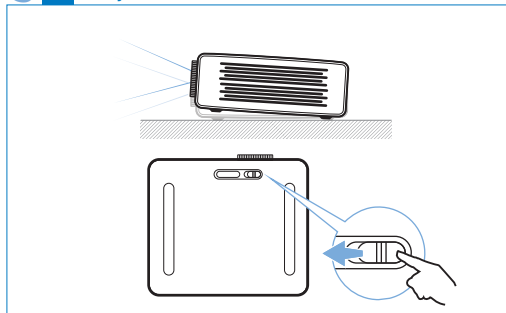
Cooper General Global Services, Inc.
 Attn: Screeno Operation
 8501 NW 17th Street, Suite 102 (Docks 32 - 33)
 Doral, FL 33126, USA

Philips and the Philips Shield Emblem are registered trademarks of Koninklijke Philips N.V. and are used under license. Screeno Innovation SA is the warrantor in relation to the product with which this booklet was packaged.
 2022 © Screeno Innovation SA

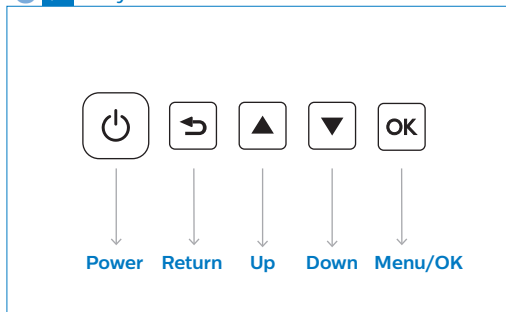


FCC ID: 2ASRT-NPX643
 This device complies with part 15 of the FCC Rules. Operation is subject to the following two conditions: (1) This device may not cause harmful interference, and (2) this device must accept any interference received, including interference that may cause undesired operation.

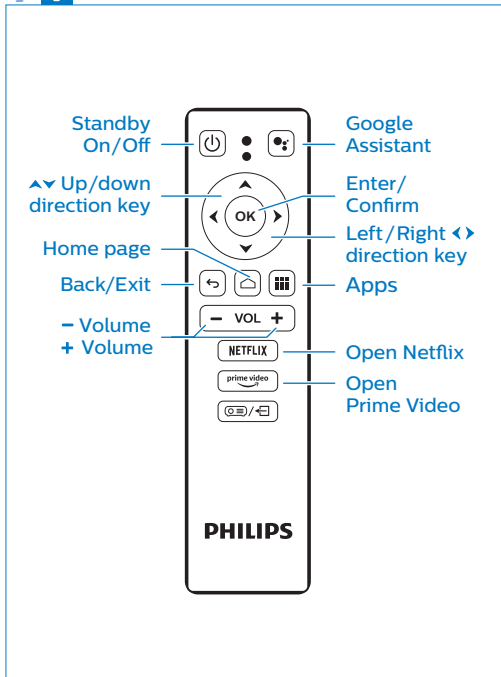
5 ▶ Adjustment knob



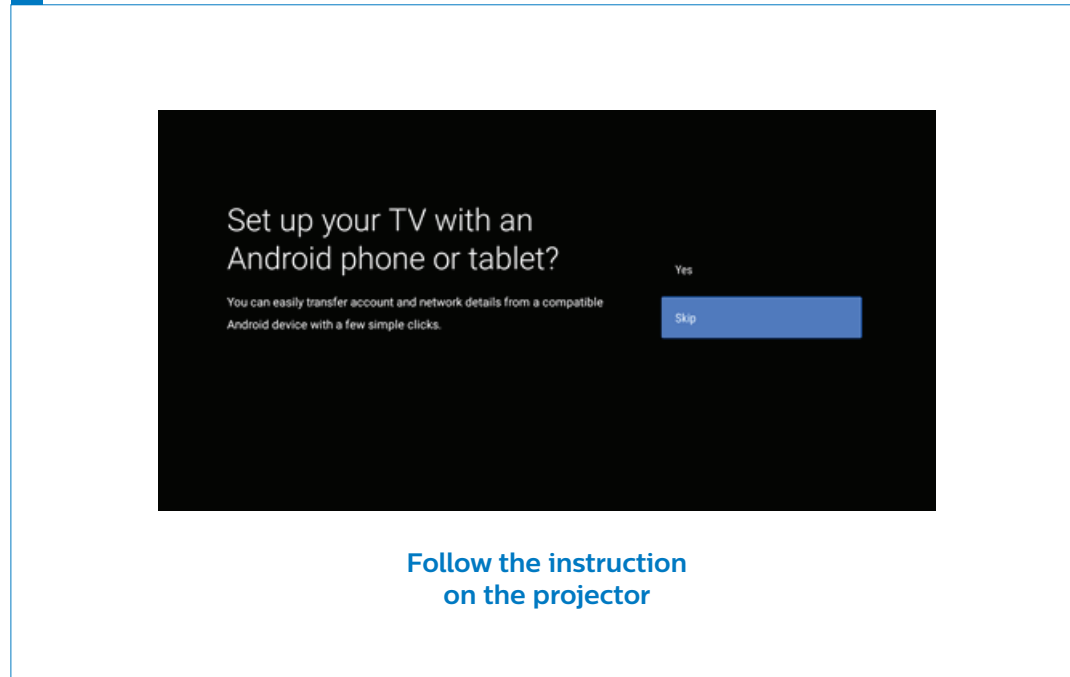
6 ▶ Keys



7 ▶ Remote control



▶ Android TV easy set up



▶ Switch function

