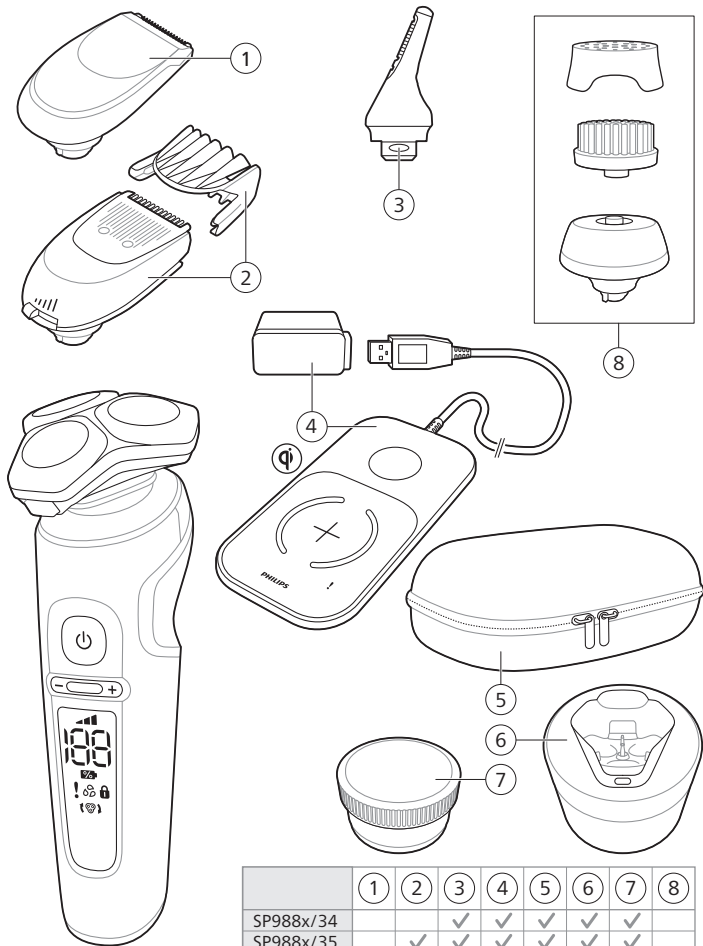


PHILIPS

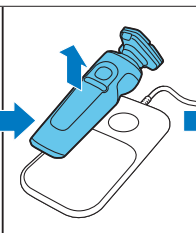
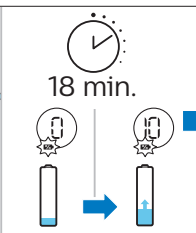
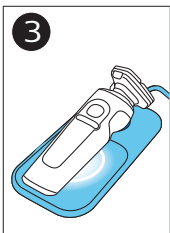
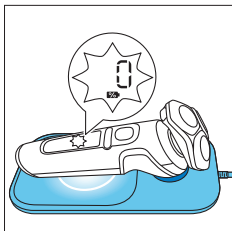
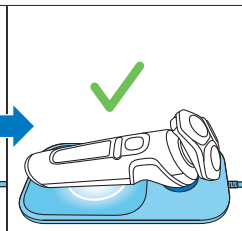
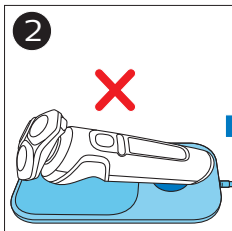
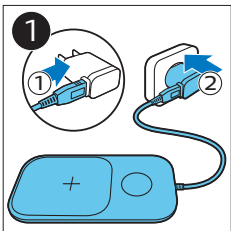
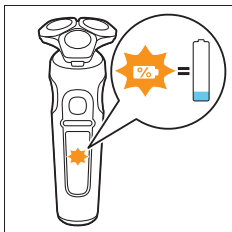
SP988X Series

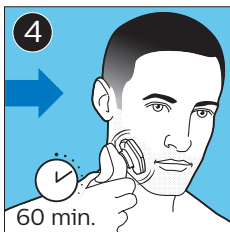
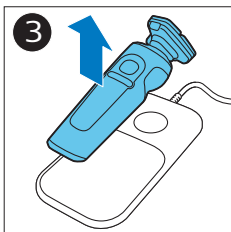
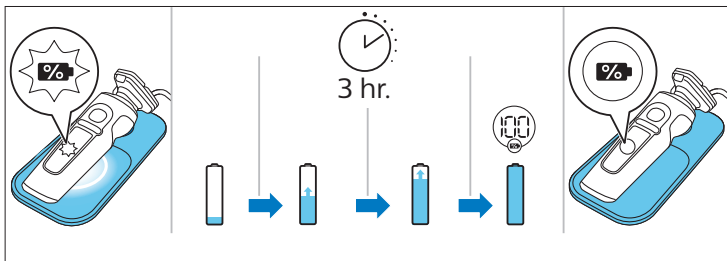


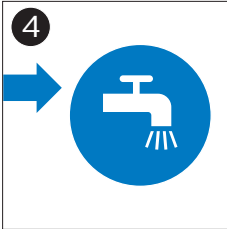
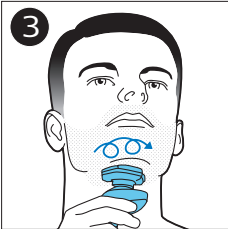
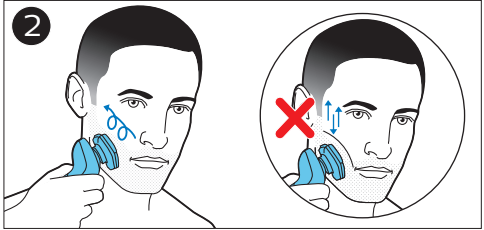
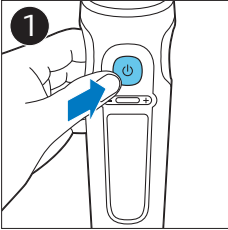
www.philips.com/support/ifu-lux

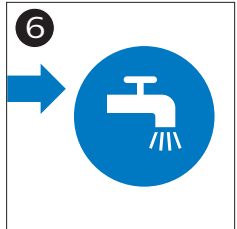
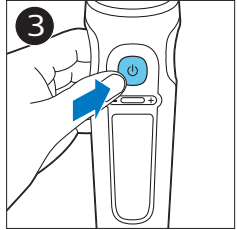
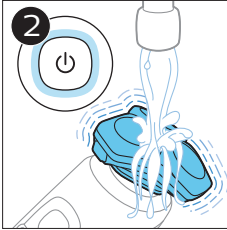


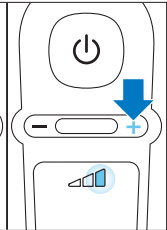
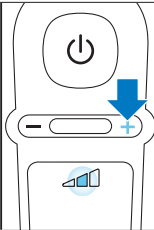
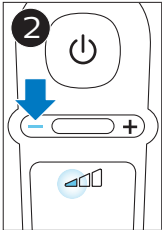
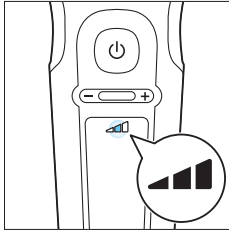
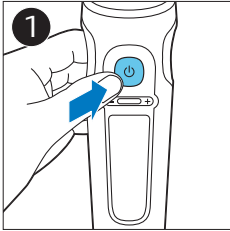
	1	2	3	4	5	6	7	8
SP988x/34			✓	✓	✓	✓	✓	
SP988x/35		✓	✓	✓	✓	✓	✓	
SP988x/36	✓		✓	✓	✓	✓	✓	
SP988x/37		✓		✓	✓	✓	✓	
SP988x/38		✓		✓	✓	✓	✓	✓

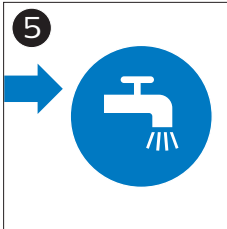
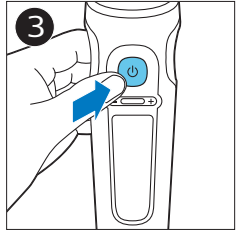
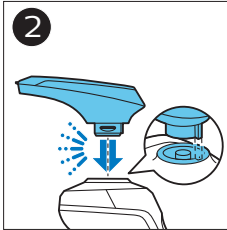
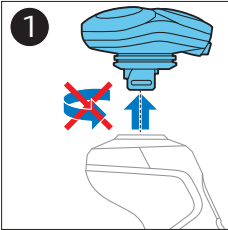
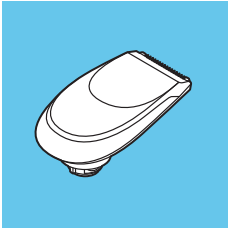


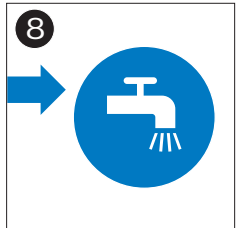
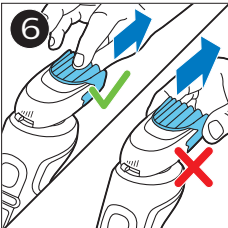
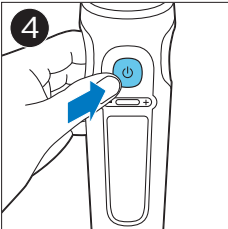
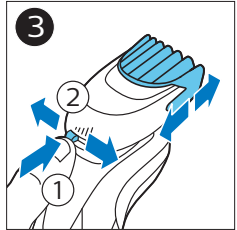
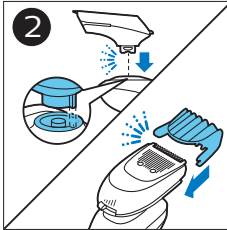
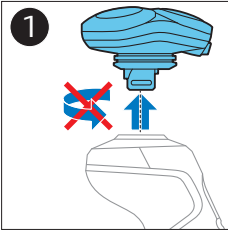
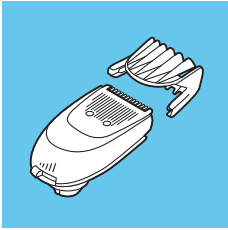


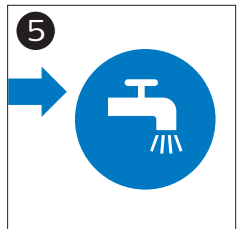
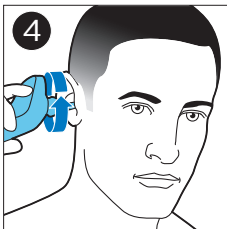
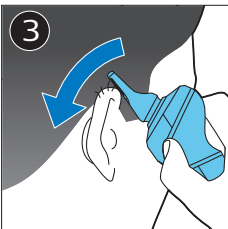
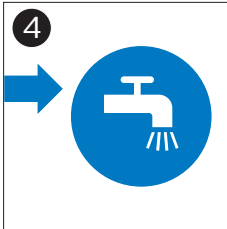
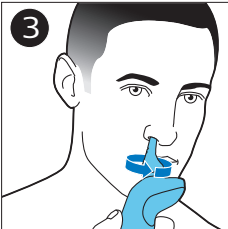
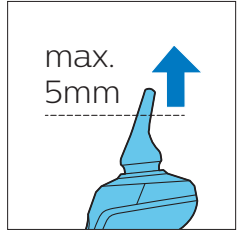
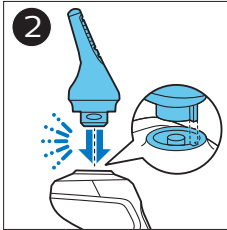
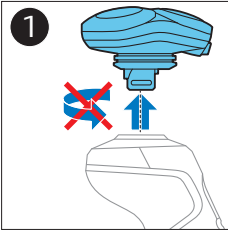
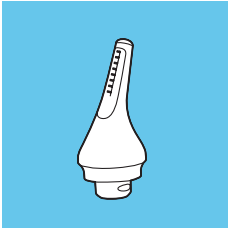


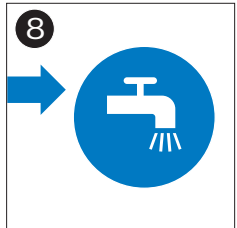
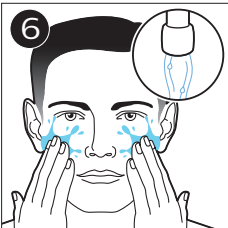
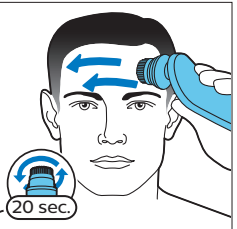
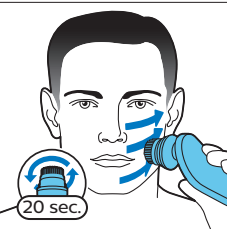
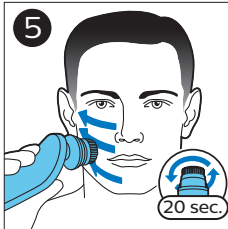
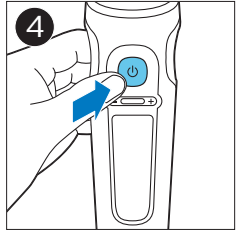
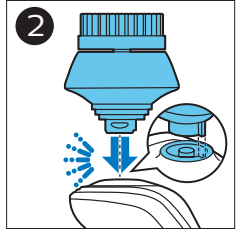
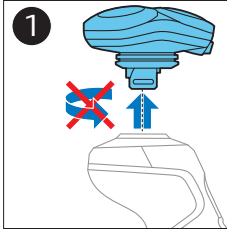
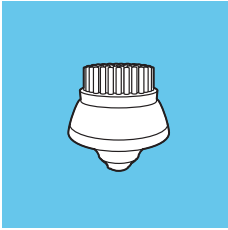


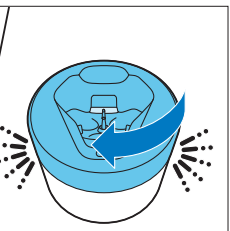
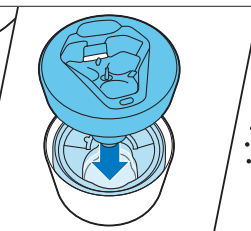
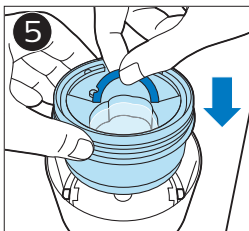
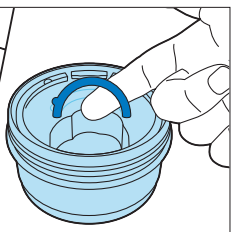
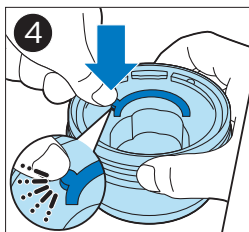
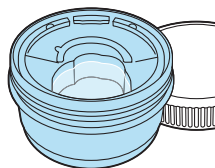
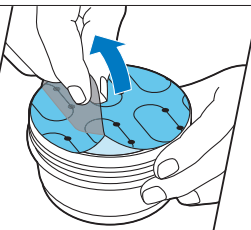
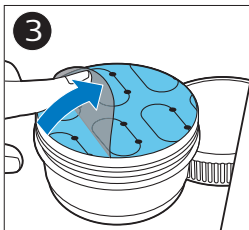
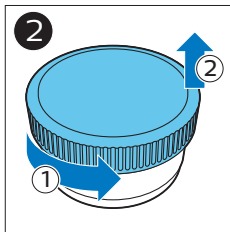
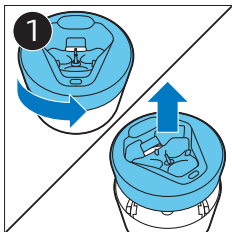
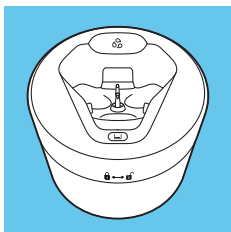


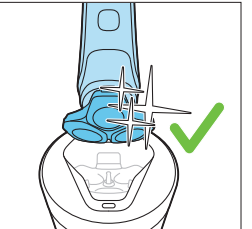
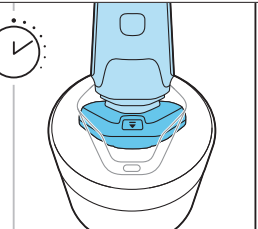
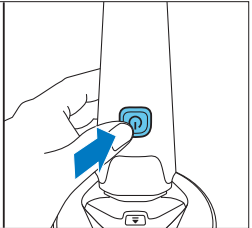
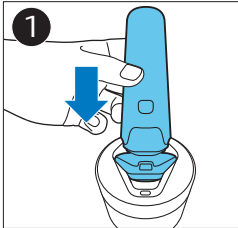
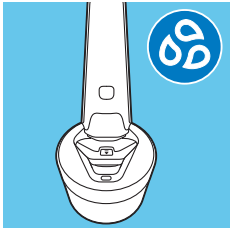


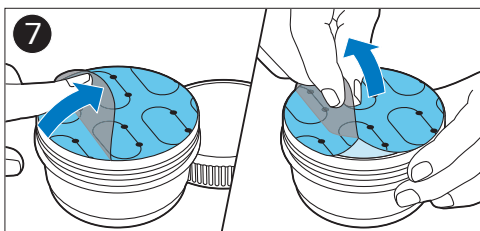
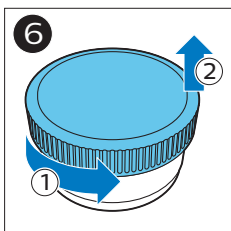
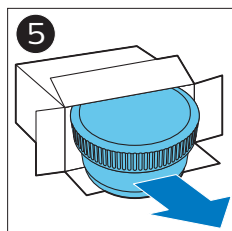
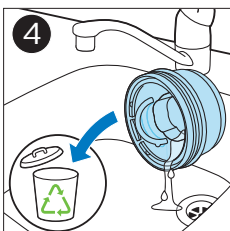
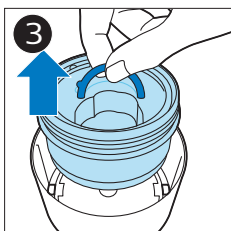
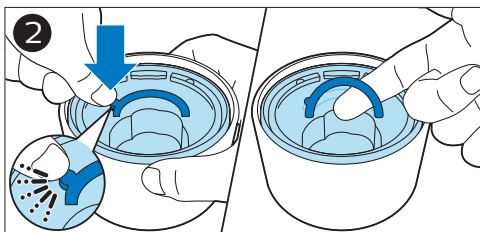
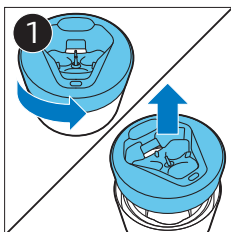
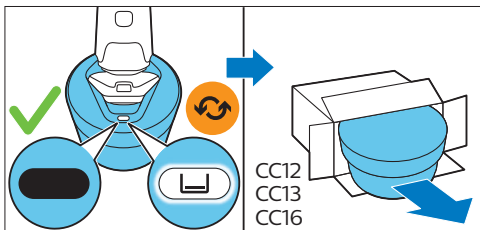
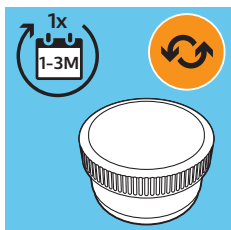


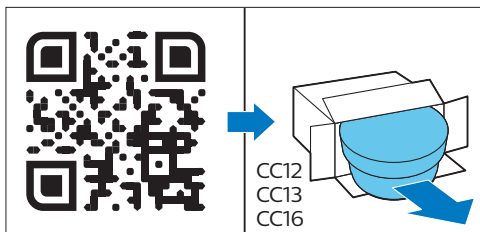
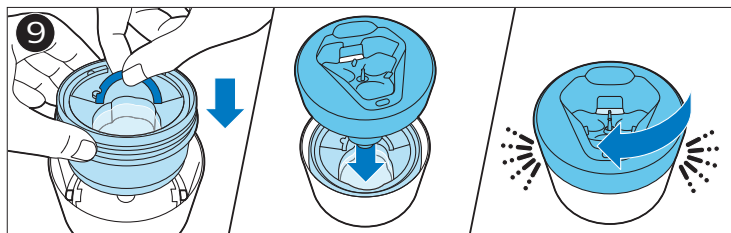
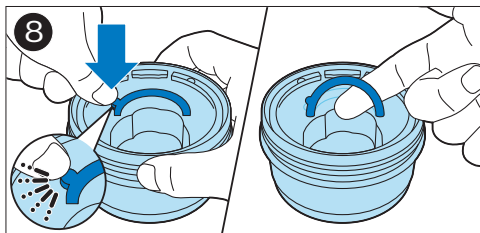


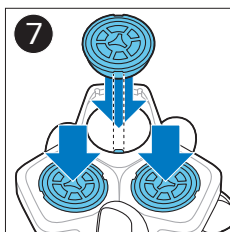
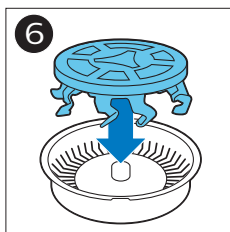
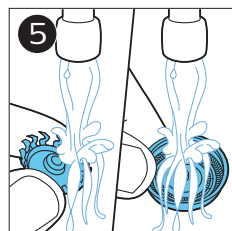
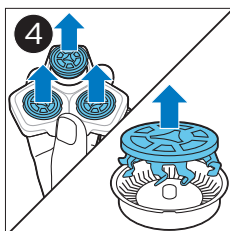
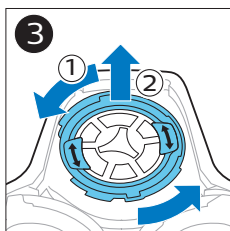
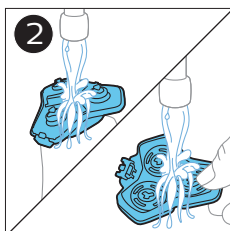
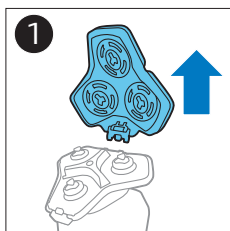
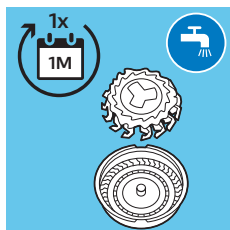


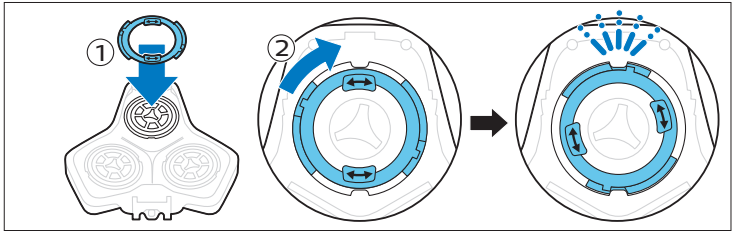




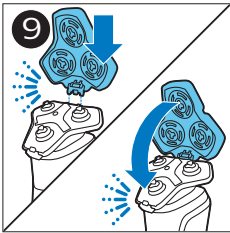




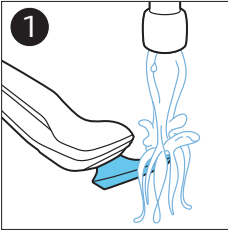
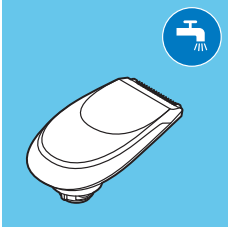


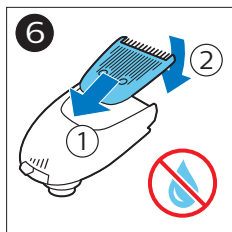
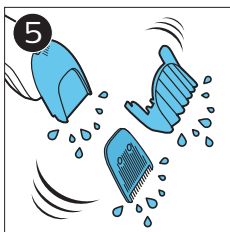
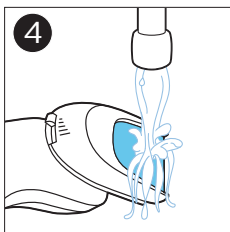
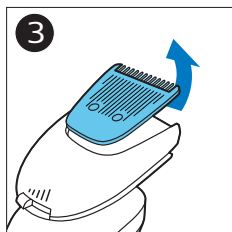
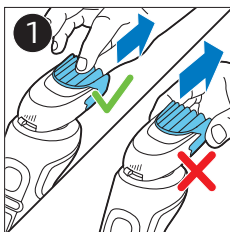
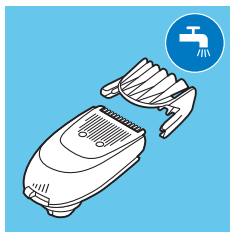


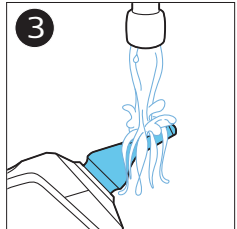
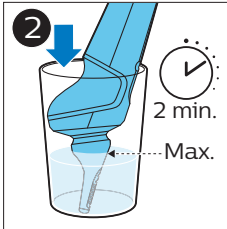
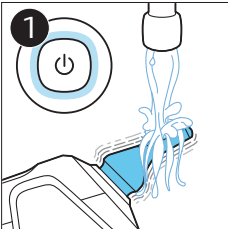
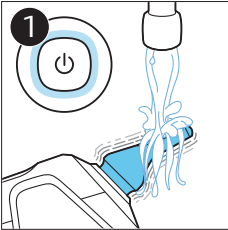
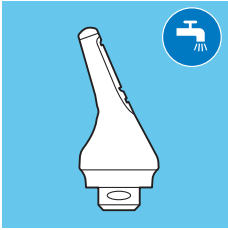
8

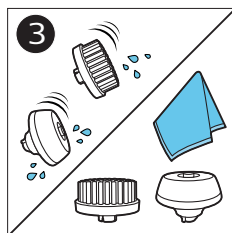
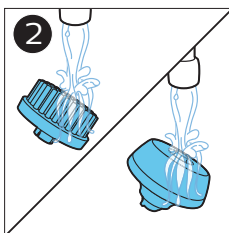
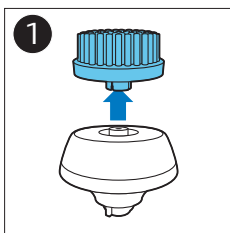
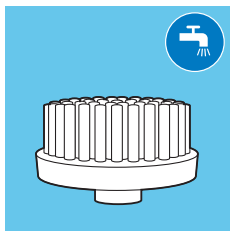


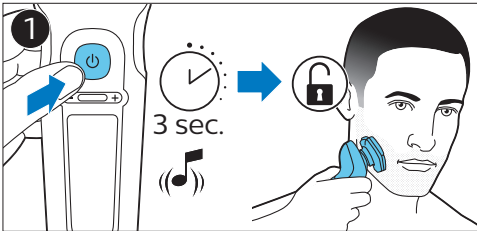
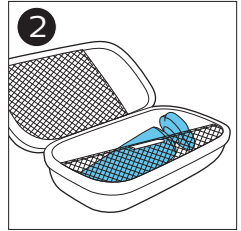
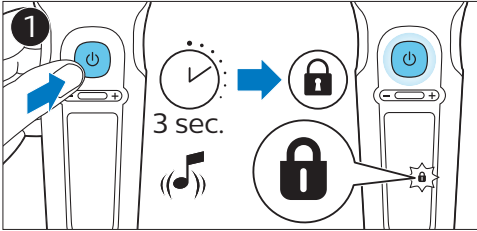
9

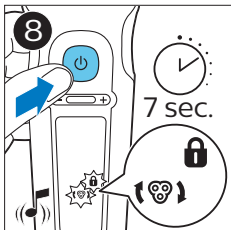
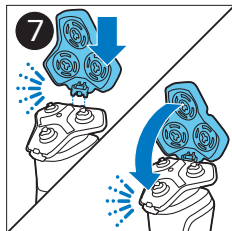
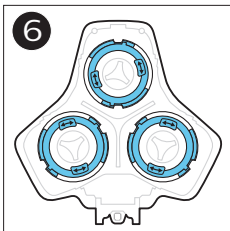
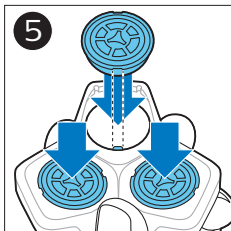
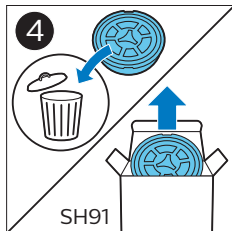
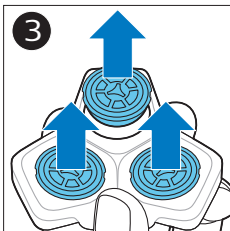
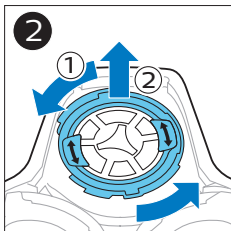
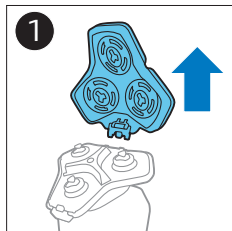
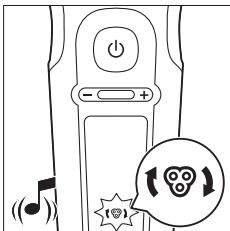
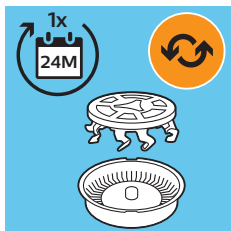


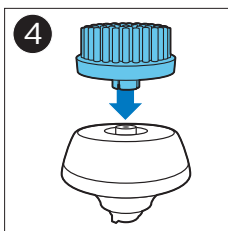
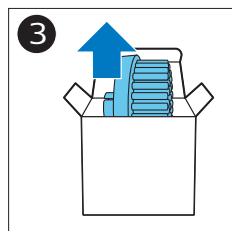
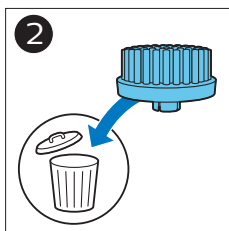
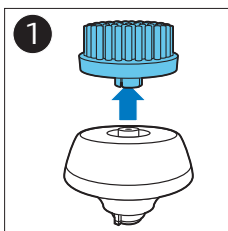
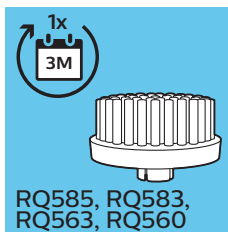


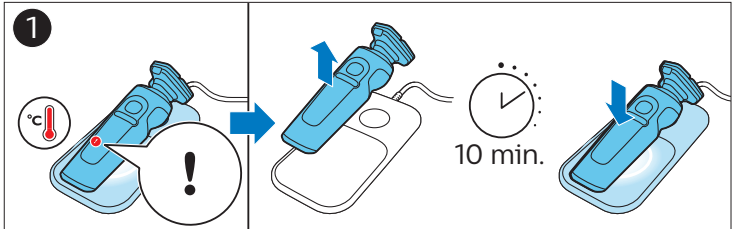
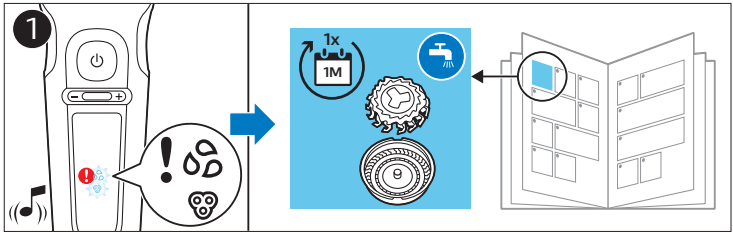
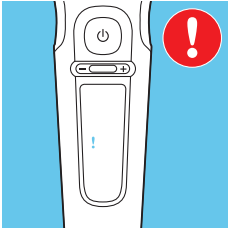


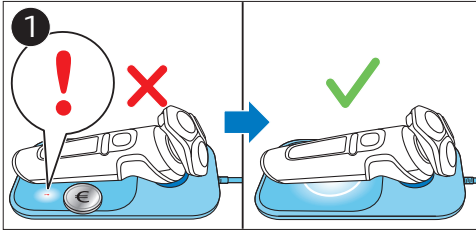
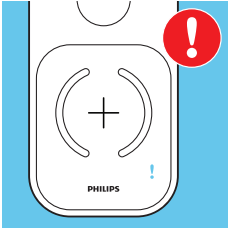














www.philips.com/support

設備名稱: 飛利浦電鬚刀 型號: SP9882, SP9885						
單元 Unit	限用物質及其化學符號					
	鉛 (Pb)	汞 (Hg)	鎘 (Cd)	六價鉻 (Cr ⁶⁺)	多溴聯苯 (PBB)	多溴二苯醚 (PBDE)
電路板 PCBs	-	O	O	O	O	O
刀片 Electrical contact pins	-	O	O	O	O	O
電源供應器 Supply unit	-	O	O	O	O	O
金屬部件 Internal metal parts	-	O	O	O	O	O
備考1. "超出0.1 wt %" 及 "超出0.01 wt %" 係指限用物質之百分比含量超出百分比含量基準值。 備考2. "O" 係指該項限用物質之百分比含量未超出百分比含量基準值。 備考3. "-" 係指該項限用物質為排除項目。						

NCC警語

取得審驗證明之低功率射頻器材，非經核准，公司、商號或使用者均不得擅自變更頻率、加大功率或變更原設計之特性及功能。低功率射頻器材之使用不得影響飛航安全及干擾合法通信；經發現有干擾現象時，應立即停用，並改善至無干擾時方得繼續使用。前述合法通信，指依電信管理法規定作業之無線電通信。低功率射頻器材須忍受合法通信或工業、科學及醫療用電波輻射性電機設備之干擾。

設備名稱: Prestige 無線充電板, 型號 (型式): HQ8510 Equipment name Type designation (Type)						
單元 Unit	限用物質及其化學符號 Restricted substances and its chemical symbols					
	鉛 Lead (Pb)	汞 Mercury (Hg)	鎘 Cadmium (Cd)	六價鉻 Hexavalent chromium (Cr ⁶⁺)	多溴聯苯 Polybrominated biphenyls (PBB)	多溴二苯醚 Polybrominated diphenyl ethers (PBDE)
電路板 PCB's	○	○	○	○	○	○
塑膠部件 Plastics parts	○	○	○	○	○	○
USB電線 USB Cable Unit	○	○	○	○	○	○
金屬部件 Internal Metal parts	○	○	○	○	○	○
<p>備考1. "超出0.1 wt %" 及 "超出0.01 wt %" 係指限用物質之百分比含量超出百分比含量基準值。 Note 1: "Exceeding 0.1 wt %" and "exceeding 0.01 wt %" indicate that the percentage content of the restricted substance exceeds the reference percentage value of presence condition.</p> <p>備考2. "○" 係指該項限用物質之百分比含量未超出百分比含量基準值。 Note 2: "○" indicates that the percentage content of the restricted substance does not exceed the percentage of reference value of presence.</p> <p>備考3. "-" 係指該項限用物質為排除項目。 Note 3: The "-" indicates that the restricted substance corresponds to the exemption.</p>						

— |

| —

— |

| —

— |


| —

— |

| —

© 2022 Koninklijke Philips N.V.
All rights reserved
3000.091.0910.2 (25/08/2022)



 >75 % recycled paper
>75 % papier recyclé