



Owner's Manual IPS LED MONITOR (LED MONITOR*)

***LG LED Monitors are LCD Monitors with LED Backlighting.**

Please read the safety information carefully before using the product.

IPS LED Monitor (LED Monitor) Model List

24MP88HM

24MP88HV

24MP88GM

24MP88TM

CONTENTS

3 LICENSE

4 ASSEMBLING AND PREPARING

- 4 Product Components
- 5 Component and Button Description
 - 5 - How to Use the Joystick Button
- 6 Parts and buttons
- 6 Input Connector
- 7 Moving and Lifting the Monitor
- 8 Installing the Monitor
 - 8 - Assembling the stand base
 - 9 - Detaching the Stand Base
 - 10 - Using the cable holder
 - 10 - Installing onto a table
 - 11 - Adjusting the angle
 - 12 - Using the Kensington lock
 - 13 - Mounting on a wall

14 USING THE MONITOR

- 14 Connecting to a PC
 - 14 - D-SUB connection
 - 14 - HDMI connection
- 15 Connecting to AV Devices
 - 15 - HDMI connection
- 15 Connecting to External Devices
 - 15 - Connecting Headphones

16 USER SETTINGS

- 17 Customizing settings
 - 17 - Menu Settings
 - 17 - -Quick Settings
 - 19 - -Picture
 - 22 - -Sound
 - 23 - -General
 - 24 - -Auto Configuration
 - 25 - -Reset
 - 26 - -Picture mode

27 TROUBLESHOOTING

29 SPECIFICATIONS

- 33 Preset Modes (Resolution)
- 33 Indicator

34 PROPER POSTURE

- 34 Proper posture for using the Monitor set.

LICENSE

Each model has different licenses. Visit www.lg.com for more information on the license.



The terms HDMI and HDMI High-Definition Multimedia Interface, and the HDMI Logo are trademarks or registered trademarks of HDMI Licensing Administrator, Inc.



MaxxAudio and additional MAXX trademarks are trademarks and/or registered trademarks of Waves Audio Ltd.

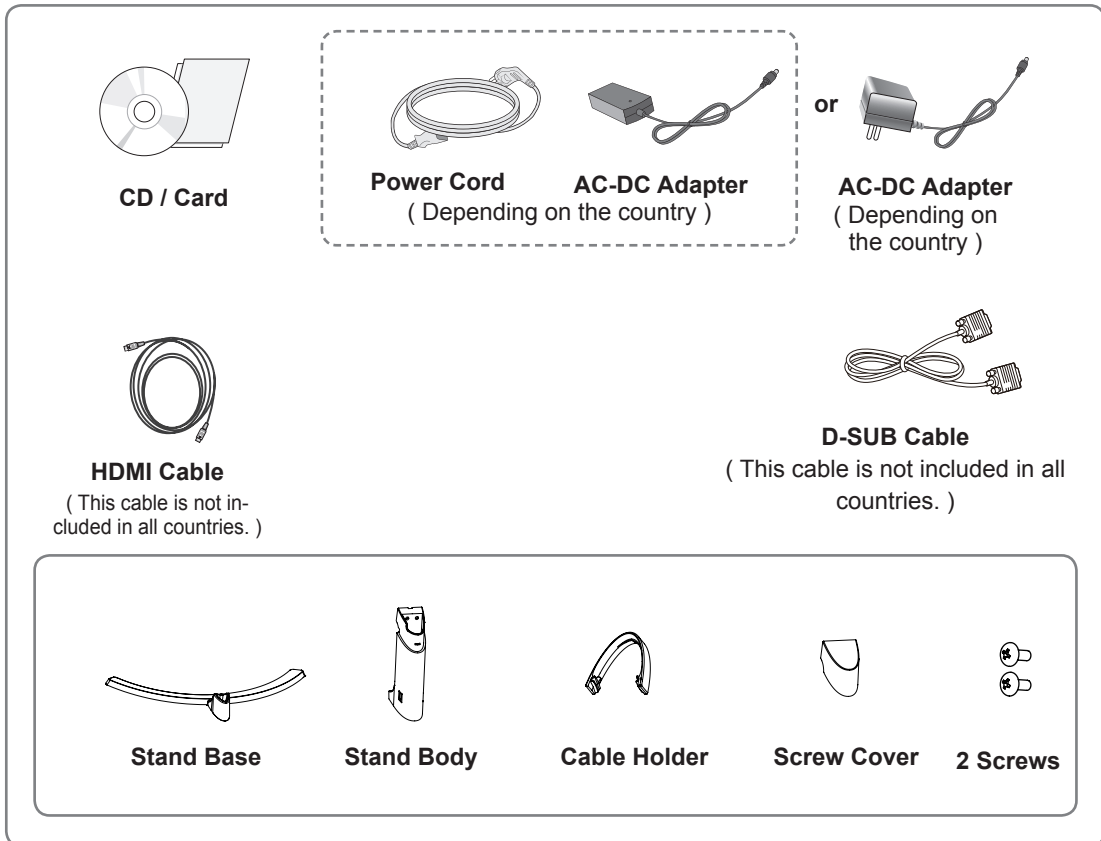
The following content is only applied to the monitor which is sold in Europe market and which needs to meet the ErP Directive:

- * This monitor is set to be turned off automatically in 4 hours after you turned on display if there is no adjustment to display.
- * To make this setting be disabled, change the option to 'Off' in OSD menu of "Automatic Standby".

ASSEMBLING AND PREPARING

Product Components

Please check whether all the components are included in the box before using the product. If there are missing components, contact the retail store where you purchased the product. Note that the product and components may look different from those shown here.



CAUTION

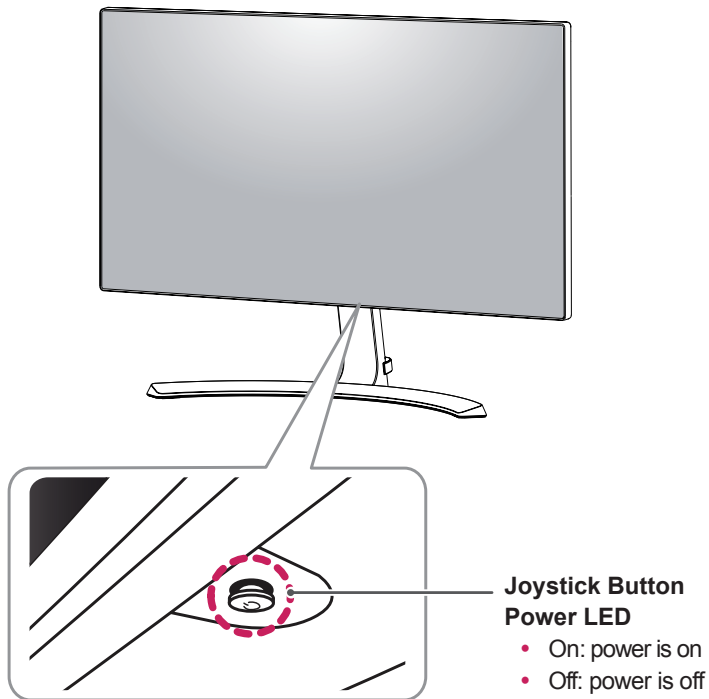
- Always use genuine components to ensure safety and product performance.
- The product warranty will not cover damage or injury caused by the use of counterfeit components.



NOTE

- Note that the components may look different from those shown here.
- Without prior notice, all information and specifications in this manual are subject to change to improve the performance of the product.
- To purchase optional accessories, visit an electronics store or online shopping site or contact the retail store where you purchased the product.
- The DisplayPort cable may not be available in some areas.

Component and Button Description



How to Use the Joystick Button

You can easily control the functions of the monitor by pressing the joystick button or moving it left/right with your finger.

Basic Functions

| | | | |
|--|--|-----------------------|---|
| | | Power on | Press the joystick button once with your finger to turn on the monitor. |
| | | Power off | Press and hold the joystick button once with your finger to turn off the monitor. |
| | | Volume Control | You can control the volume by moving the joystick button left/right. |

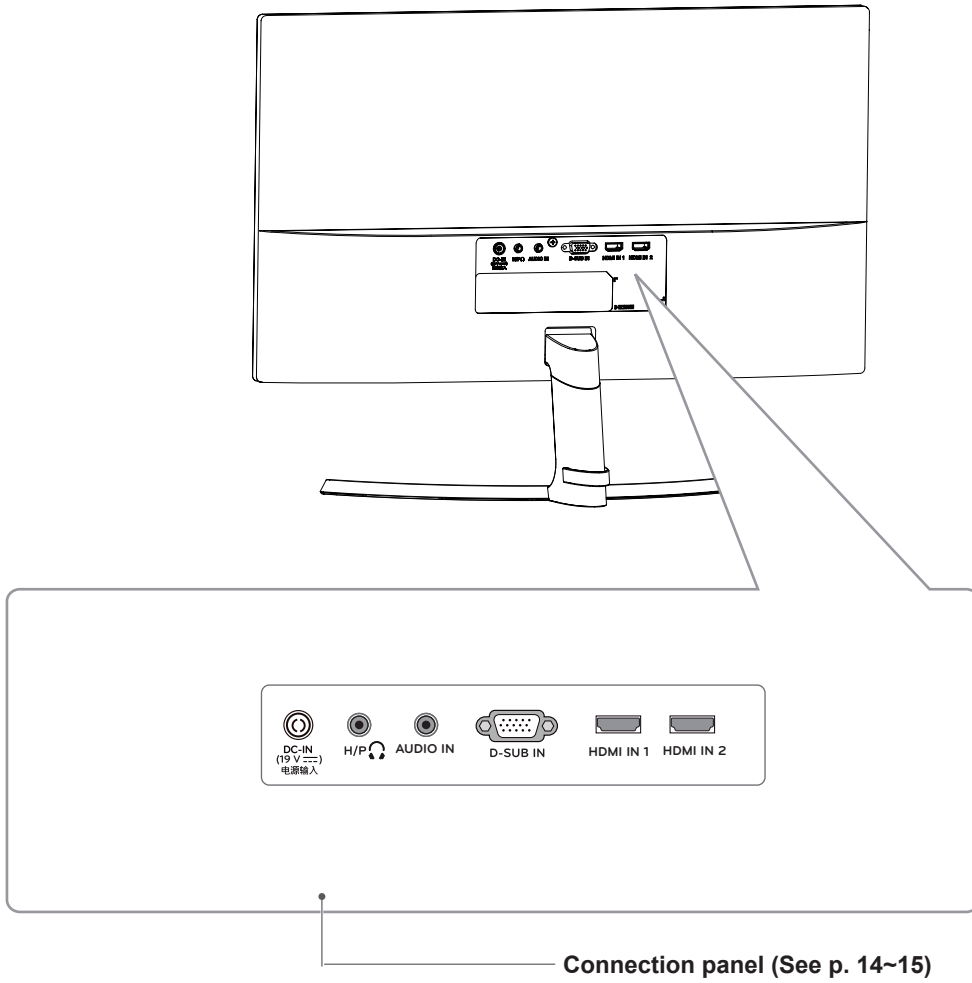


NOTE

- The joystick button is located at the bottom of the monitor.

Parts and buttons

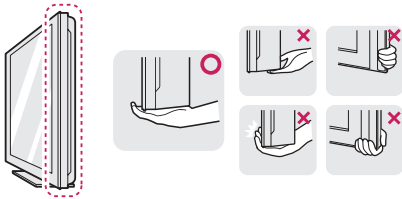
Input Connector



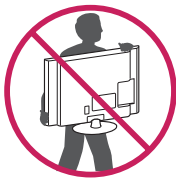
Moving and Lifting the Monitor

When moving or lifting the monitor, follow these instructions to prevent the monitor from being scratched or damaged and to ensure safe transportation regardless of its shape or size.

- It is advisable to place the monitor in the original box or packing material before attempting to move it.
- Before moving or lifting the monitor, disconnect the power cord and all cables.
- Hold the top and bottom of the monitor frame firmly. Do not hold the panel itself.



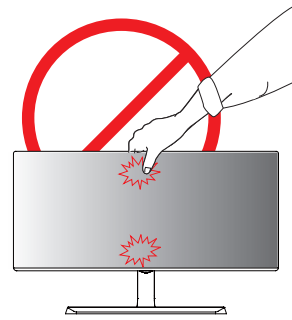
- When holding the monitor, the screen should face away from you to prevent it being scratched.



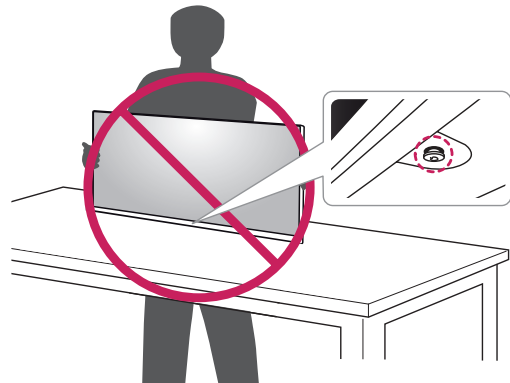
- When moving the monitor, avoid any strong shock or vibrations to the product.
- When moving the monitor, keep it upright, never turn the monitor on its side or tilt it sideways.

CAUTION

- As far as possible, avoid touching the monitor screen. This may result in damage to the screen or some of the pixels used to create images.



- If you use the monitor panel without the stand base, its joystick button may cause the monitor to become unstable and fall, resulting in damage to the monitor or human injury. In addition, this may cause the joystick button to malfunction.



Installing the Monitor

Assembling the stand base

- 1 Place the screen face down.

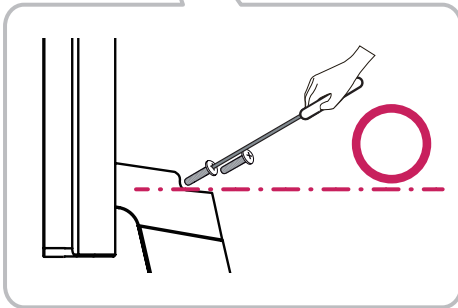
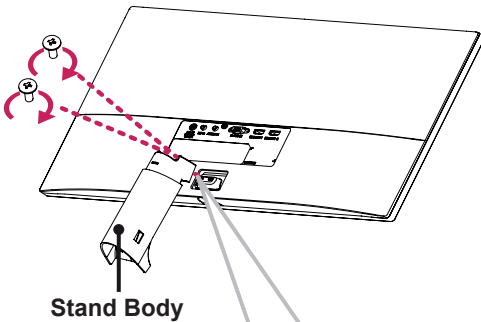


CAUTION

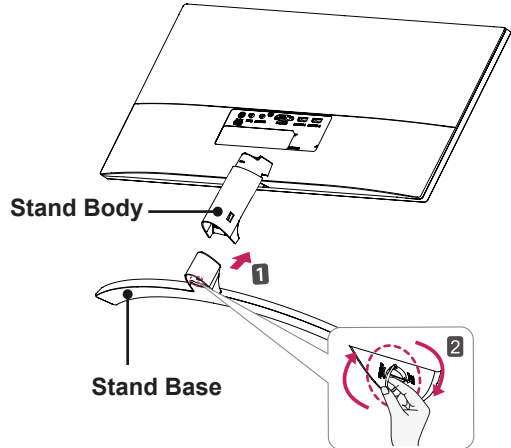
- To protect the screen from scratches, cover the surface with a soft cloth.

- 2 Check the direction of the **stand body** (front, back) and then mount the **stand body** onto the **stand hinge**.

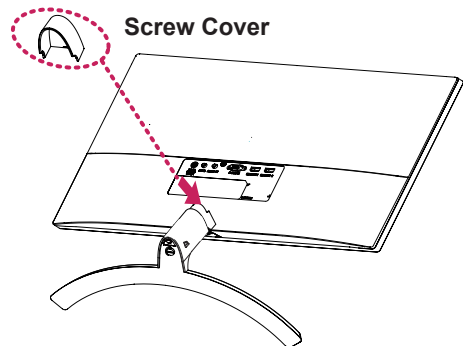
Use a tool to attach the **stand body** as shown in the figure.



- 3 ① Attach the **Stand Base** to **Stand Body**.
② Tighten the screw to the right.



- 4 Attach the **screw cover**.



CAUTION

Applying excessive force when tightening the screws may cause damage to the monitor. Damage caused in this way will not be covered by the product warranty.



CAUTION

It may hurt your foot off the stand, so be careful.

Detaching the Stand Base

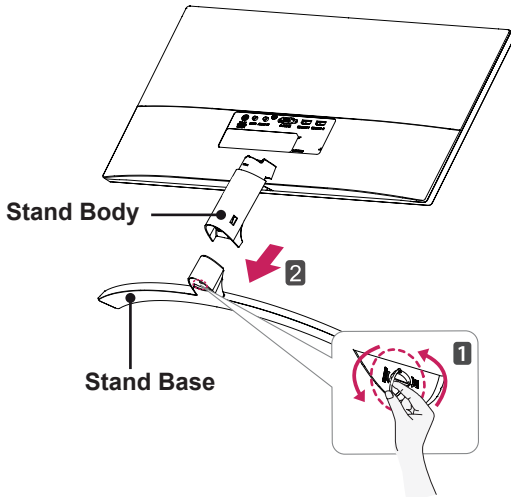
- 1 Place the screen face down.



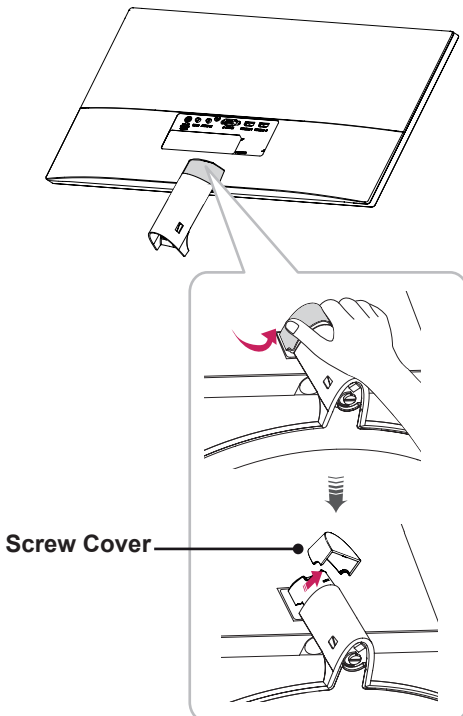
CAUTION

- To protect the screen from scratches, cover the surface with a soft cloth.

- 2 **1** Turn the screw to the left.
- 2** Pull out the **Stand Base**.

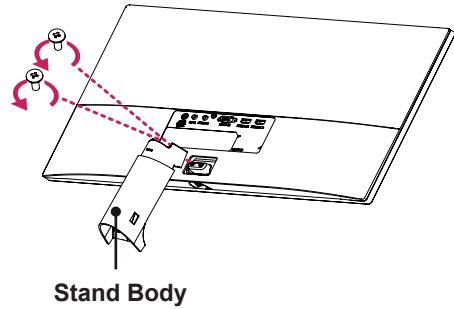


- 3 As shown in the illustration, pull Screw Cover out to separate it from the set.



- 4 Remove the two screws on the back of **stand body**.

As shown in the illustration, disconnect the **stand body** from the **stand hinge**.



CAUTION

- Illustrations in this document represent typical procedures, so they may look different from the actual product.
- Applying excessive force when tightening screws may cause damage to the monitor. Damage caused in this way will not be covered by the product warranty.
- Be careful not to hurt your hand on the edges of the screw covers.
- Do not carry the monitor upside down by just holding the base. This may cause the monitor to fall off the stand and could result in personal injury.
- When lifting or moving the monitor, do not touch the monitor screen. The force applied to the monitor screen may cause damage to it.

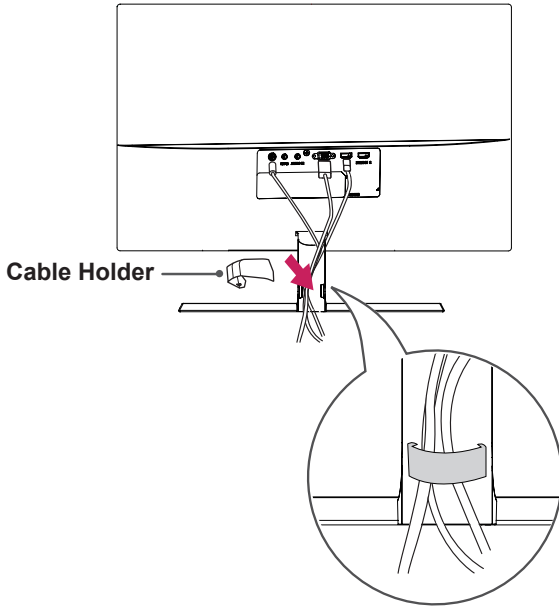


CAUTION

It may hurt your foot off the stand, so be careful.

Using the cable holder

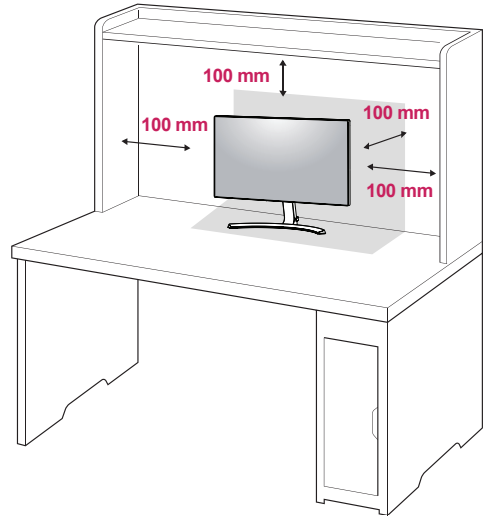
Arrange the cables using the cable holder as shown in the illustration.



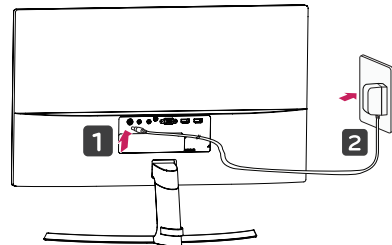
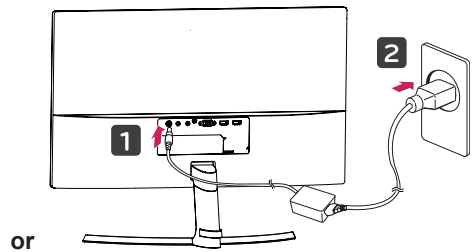
Installing onto a table

- 1 Lift the monitor and place it on the table in an upright position.

Place at least **100 mm** away from the wall to ensure sufficient ventilation.



- 2 Connect the power adapter to the monitor and then plug the power cord into the wall outlet.



- 3 Press the joystick button on the bottom of the monitor to turn on the monitor.

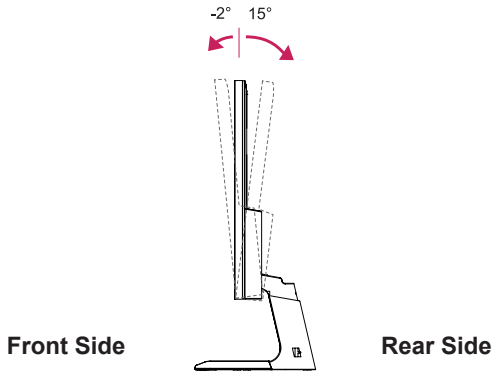


CAUTION

- Unplug the power cord prior to moving or installing the monitor. There is risk of electric shock.

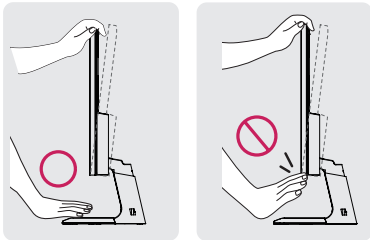
Adjusting the angle

- 1 Place the monitor in an upright position, mounted on the stand base.
- 2 Adjust the angle of the screen. The angle of the screen can be adjusted forwards or backwards for a comfortable viewing experience.

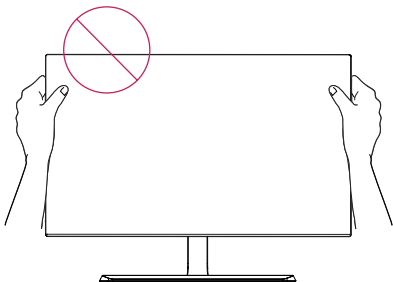


WARNING

- To avoid injury to the fingers when adjusting the screen, do not hold the lower part of the monitor's frame as illustrated below.



- Be careful not to touch or press the screen area when adjusting the angle of the monitor.

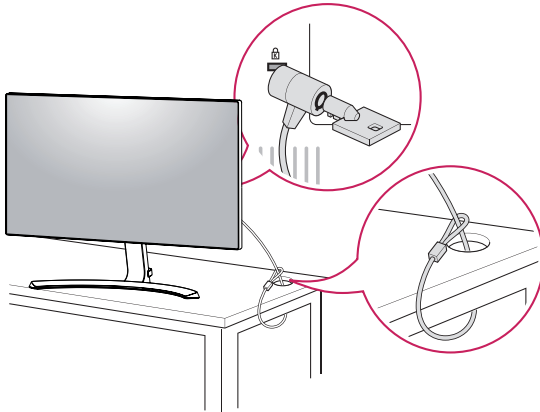


Using the Kensington lock

The Kensington security system connector is located at the back of the Monitor set.

For more information on installation and usage, refer to the Kensington lock user manual or visit the website at <http://www.kensington.com>.

Connect the Kensington security system cable between the Monitor set and a table.



NOTE

- Use of the Kensington lock is optional. The accessories can be purchased at your local electronics store.

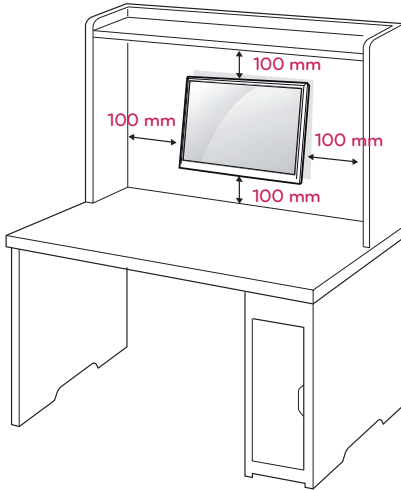
24MP88TM

24MP88HV

24MP88GM

Mounting on a wall

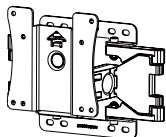
For proper ventilation, allow a clearance of 100 mm on each side and from the wall. Detailed instructions are available from your dealer, see the optional Tilt Wall Mounting Bracket Installation and Setup Guide.



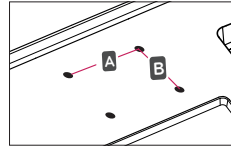
If you intend to mount the Monitor set to a wall, attach Wall mounting interface (optional parts) to the back of the set.

When you install the Monitor set using a wall mounting interface (optional parts), attach it carefully so it will not drop.

- 1 If you use screw longer than standard, the monitor might be damaged internally.
- 2 If you use improper screw, the product might be damaged and drop from mounted position. In this case, LG Electronics is not responsible for it.

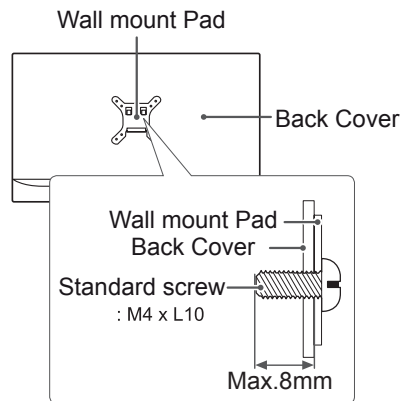
| | | |
|------------------------------------|--|----------|
| Model | 24MP88HV | 24MP88GM |
| | 24MP88TM | |
| Wall Mount (A x B) | 75 x 75 | |
| Standard screw | M4 | |
| Number of screws | 4 | |
| Wall Mount Plate (Optional) | LSW 149  | |

• Wall Mount (A x B)



! CAUTION

- Disconnect the power cord first, and then move or install the Monitor set. Otherwise electric shock may occur.
- If you install the Monitor set on a ceiling or slanted wall, it may fall and result in severe injury.
- Use only an authorized LG wall mount and contact the local dealer or qualified personnel.
- Do not over tighten the screws as this may cause damage to the Monitor set and void your warranty.
- Use only screws and wall mounts that meet the VESA standard. Any damages or injuries by misuse or using an improper accessory are not covered by the warranty.
- Screw length from outer surface of back cover should be under 8mm.



! NOTE

- Use the screws that are listed on the VESA standard screw specifications.
- The wall mount kit will include an installation manual and necessary parts.
- The wall mount bracket is optional. You can obtain additional accessories from your local dealer.
- The length of screws may differ depending on the wall mount. Be sure to use the proper length.
- For more information, refer to the instructions supplied with the wall mount.

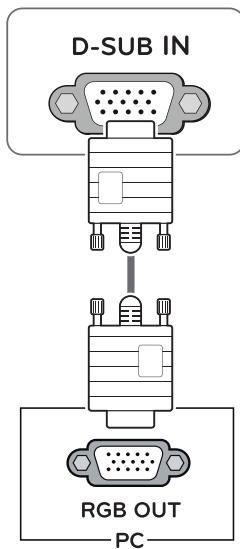
USING THE MONITOR

Connecting to a PC

- This monitor supports the *Plug and Play feature.
*Plug and Play: A feature that allows you to add a device to your computer without having to reconfigure anything or install any manual drivers.

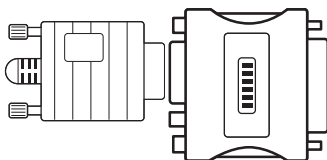
D-SUB connection

Transmits analog video from your PC to the Monitor set. Connect the PC and the Monitor set with the supplied D-sub 15 pin signal cable as shown in the following illustrations.



NOTE

- When using a D-Sub signal input cable connector for Macintosh



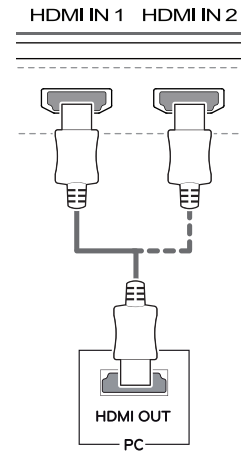
• Mac adapter

For Apple Macintosh use, a separate plug adapter is needed to change the 15 pin high density (3 row) D-SUB VGA connector on the supplied cable to a 15 pin 2 row connector.

HDMI connection

Transmits the digital video and audio signals from your PC and A/V devices to the monitor. Connect your PC and AV device to the monitor with the HDMI cable as illustrated below.

Press the menu button and then select the input option from the input menu.



NOTE

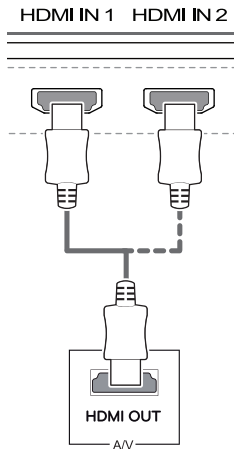
- If you use HDMI PC, it can cause compatibility problem.
- Use a certified cable with the HDMI logo attached. If you do not use a certified HDMI cable, the screen may not display or a connection error may occur.
- Recommended HDMI cable types
 - High-Speed HDMI[®]/TM Cable
 - High-Speed HDMI[®]/TM Cable with Ethernet

Connecting to AV Devices

HDMI connection

Transmits the digital video and audio signals from your PC and A/V devices to the monitor. Connect your PC and AV device to the monitor with the HDMI cable as illustrated below.

Press the menu button and then select the input option from the input menu.



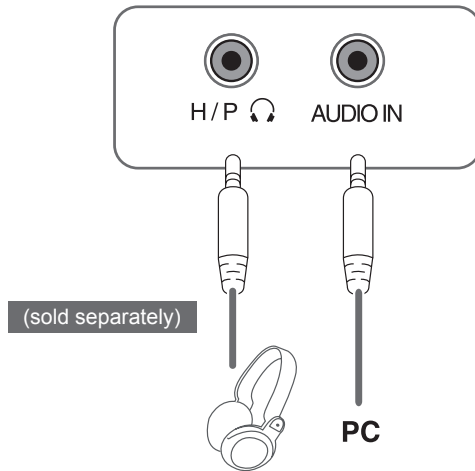
! NOTE

- If you use HDMI PC, it can cause compatibility problem.
- Use a certified cable with the HDMI logo attached. If you do not use a certified HDMI cable, the screen may not display or a connection error may occur.
- Recommended HDMI cable types
 - High-Speed HDMI^{®/™} Cable
 - High-Speed HDMI^{®/™} Cable with Ethernet

Connecting to External Devices

Connecting Headphones

Connect peripherals to the monitor via the headphones port. Connect as illustrated.

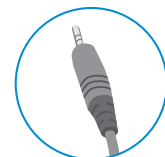


! NOTE

- Peripheral devices are sold separately.
- If you use angled earphones, it may cause a problem with connecting another external device to the monitor. Therefore, it is recommended to use straight earphones.



Angled



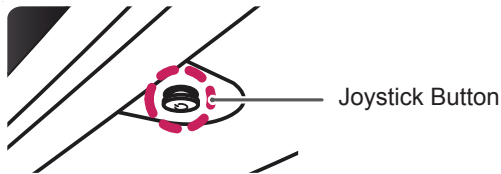
Straight




- Depending on the audio settings of the PC and external device, headphones and speaker functions may be limited.

USER SETTINGS

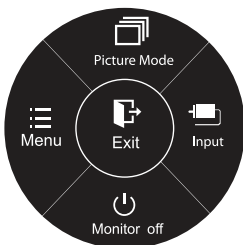
Activating the Main Menu

- 1 Press the joystick button on the bottom of the monitor.
- 2 Move the joystick up/down (▲/▼) and left/right(◀/▶) to set the options.
- 3 Press the joystick button once more to exit the main menu.



| Button | Menu Status | Description |
|---|-----------------------------|---|
|  | Main menu disabled | Enables the main menu. |
| | Main menu enabled | Exits the main menu. (Holding down the button to turn off the monitor. You can turn off the monitor this way at any time, including when the OSD is on.) |
|  | ◀ Main menu disabled | Adjusts the monitor volume level. |
| | ◀ Main menu enabled | Enters the menu features. |
| | ▶ Main menu disabled | Adjusts the monitor volume level. |
| | ▶ Main menu enabled | Enters the input feature. |
|  | ▲ Main menu disabled | Enables the main menu. |
| | ▲ Main menu enabled | Enters the picture mode feature. |
| | ▼ Main menu disabled | Enables the main menu. |
| | ▼ Main menu enabled | Turns off the monitor. |

Main Menu Features



Ⓞ Long Press: Monitor off

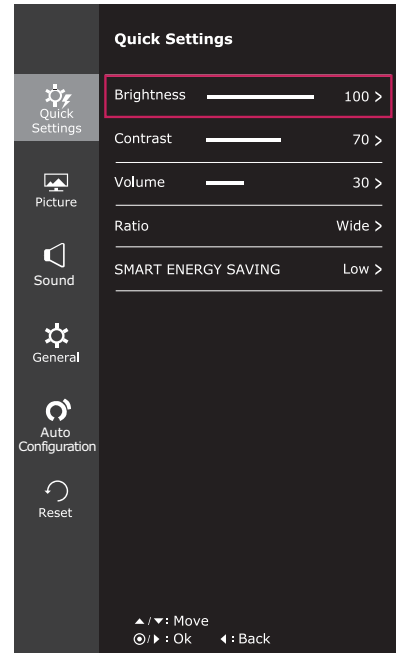
| Main Menu | Description |
|---------------------|---|
| Menu | Configures the screen settings. |
| Picture Mode | Select picture mode to achieve the best display effect. |
| Input | You can operate the change of input signals. • When two input signals over are connected and select the input menu, input signal(D-SUB/HDMI) will be changed sequentially. • When only one signal is connected, it is automatically detected. The default setting is D-SUB. |
| Monitor off | Turns off the monitor. |
| Exit | Exits the main menu. |

Customizing settings

Menu Settings

-Quick Settings

- 1 To view the **OSD menu**, press the **joystick button** at the bottom of the monitor and then enter the **Menu**.
- 2 Go to **Quick Settings > Brightness** by moving the joystick.
- 3 Configure the options following the instructions that appear in the bottom right corner.
- 4 To return to the upper menu or set other menu items, move the joystick to ◀ or pressing (⊙ / OK) it.
- 5 If you want to exit the OSD menu, move the joystick to ◀ until you exit.



Each option is described below.

| Menu > Quick Settings | Description | |
|----------------------------|---|--|
| Brightness | Adjusts the color contrast and brightness of the screen. | |
| Contrast | | |
| Volume | Adjusts the volume. | |
| | <div style="border: 1px solid black; padding: 5px;"> <p>NOTE</p> <ul style="list-style-type: none"> • You can adjust Mute/ Unmute by moving the joystick button to ▼ in the Volume menu. </div> | |
| Ratio | Adjusts the screen ratio. | |
| | Wide | Displays the video in wide-screen, regardless of the video signal input. |
| | Original | Displays a video according to the input video signal aspect ratio. |
| SMART ENERGY SAVING | High | Enables SMART ENERGY SAVING you can save energy with this energy- high efficient function. |
| | Low | Enables SMART ENERGY SAVING you can save energy with this energy- low efficient function. |
| | Off | Disables SMART ENERGY SAVING . |

* **SMART ENERGY SAVING : Conserve energy by using luminance compensation algorithm.**

NOTE

- The display may look the same for Wide, Original options at the recommended resolution (1920 x 1080).
- The ratio is disabled in the interlaced signal.

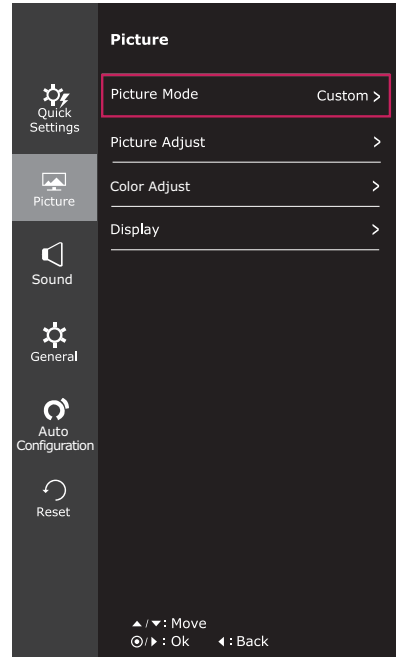


NOTE

- The value of energy saving data may differ depending on panel and panel suppliers.
- If you select the option of SMART ENERGY SAVING is High or Low, monitor luminance become lower or higher depend on source.

-Picture

- 1 To view the **OSD menu**, press the **joystick button** at the bottom of the monitor and then enter the **Menu**.
- 2 Go to **Picture** by moving the joystick.
- 3 Configure the options following the instructions that appear in the bottom right corner.
- 4 To return to the upper menu or set other menu items, move the joystick to ◀ or pressing (⊙ / OK) it.
- 5 If you want to exit the OSD menu, move the joystick to ◀ until you exit.



Each option is described below.

| Menu > Picture | Description | |
|---------------------|-----------------------|---|
| Picture Mode | Custom | Allows the user to adjust each element. The color mode of the main menu can be adjusted. |
| | Reader 1 | It is a mode that the screen is adjusted to the best for the newspaper. If you want screen more bright, you can control brightness in Menu OSD. |
| | Reader 2 | It is a mode that the screen is adjusted to the best for the cartoon. If you want screen more bright, you can control brightness in Menu OSD. |
| | Photo | Optimizes the screen to view photos. |
| | Cinema | Optimizes the screen to improve the visual effects of a video. |
| | Color Weakness | This mode is for users who cannot distinguish between red and green. It enables users with color weakness to easily distinguish between the two colors. |
| | Game | Optimizes the screen for gameplay. |

! NOTE

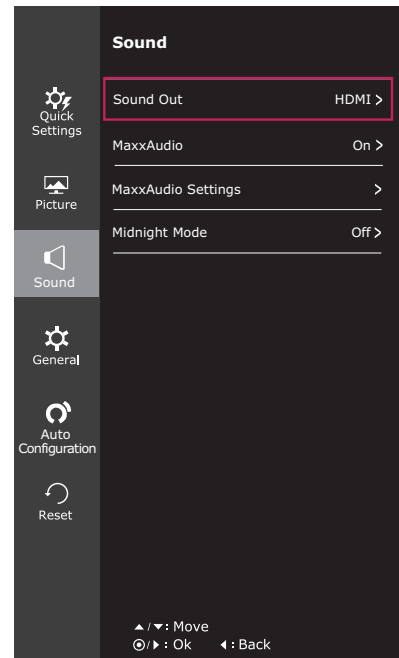
- This is subsidiary for color weakness user. Therefore if you feel uncomfortable with the screen, please turn off this function.
- This function can't distinguish some colors in some images.

| | | | |
|-----------------------|--------------------------|--|--|
| Picture Adjust | SUPER RESOLUTION+ | High | Optimized picture quality is displayed when a user wants crystal clear images. It is effective for high quality video or game. |
| | | Middle | The optimized picture quality is displayed when a user wants images between low and high modes for comfortable viewing. It is effective for UCC or SD video. |
| | | Low | The optimized picture quality is displayed when a user wants smooth and natural images. It is ineffective for slow-moving pictures or still images. |
| | | Off | Select this option for everyday viewing. SUPER RESOLUTION+ is turned off in this mode. |
| | Sharpness | Adjusts the sharpness of the screen. | |
| | Black Level | Sets the offset level (for HDMI only). • Offset: as a reference for a video signal, this is the darkest color the monitor can display. | |
| | | High | Keeps the current contrast ratio of the screen. |
| | | Low | Lowers the black levels and raises the white levels from the current contrast ratio of the screen. |
| | Response Time | Sets a response time for displayed pictures based on the speed of the screen. For a normal environment, it is recommended that you use Normal. For a fast-moving picture, it is recommended that you use High. Setting to High may cause image sticking. | |
| | | High | Sets the response time to High. |
| | | Middle | Sets the response time to Middle. |
| | | Low | Sets the response time to Low. |
| | | Off | Sets the response time to Off. |
| | Overscan | To select the range of output image for DTV timing in HDMI input. (only for HDMI input) Recommend overscan function to turn on when connect AV equipment. | |
| | DFC | Adjusts the brightness automatically according to the screen. | |
| | Black Stabilizer | Black Stabilizer : You can control the black contrast to have better visibility in dark scenes. Increasing the Black Stabilizer value brightens the low gray level area on the screen. (You can easily distinguish objects on dark game screens.) Reducing the Black Stabilizer value darkens the low gray level area and increases the dynamic contrast on the screen. | |

| | | | |
|---------------------|-------------------|---|--|
| Color Adjust | Gamma | The higher the gamma value, the darker the image becomes. Likewise, the lower the gamma value, the lighter the image becomes. If you do not need to adjust the gamma settings, select Off. | |
| | Color Temp | Selects the factory default picture color. Warm: Sets the screen color to a reddish tone. Medium: Sets the screen color between a red and blue tone. Cool: Sets the screen color to a bluish tone. | |
| | | Custom | |
| | | Red Green Blue | You can customize the picture color using Red, Green, and Blue colors. |
| | Six Color | Meets the user requirements for colors through adjusting the color and saturation of the six colors(Red_Hue, Red_Saturation, Green_Hue, Green_Saturation, Blue_Hue, Blue_Saturation, Cyan_Hue, Cyan_Saturation, Magenta_Hue, Magenta_Saturation, Yellow_Hue, Yellow_Saturation) and saving the settings. | |
| | | *Hue: Adjusts tone of the screen. *Saturation: Adjusts the saturation of the screen colors. The lower the value, less saturated and bright the colors become. The higher the value, the more saturated and dark the colors become. | |
| Reset | | | |
| Display | Horizontal | To move image left and right. | |
| | Vertical | To move image up and down. | |
| | Clock | To minimize any vertical bars or stripes visible on the screen background. The horizontal screen size will also change. | |
| | Phase | To adjust the focus of the display. This item allows you to remove any horizontal noise and clear or sharpen the image of characters. | |

-Sound

- 1 To view the **OSD menu**, press the **joystick button** at the bottom of the monitor and then enter the **Menu**.
- 2 Go to **Sound** by moving the joystick.
- 3 Configure the options following the instructions that appear in the bottom right corner.
- 4 To return to the upper menu or set other menu items, move the joystick to ◀ or pressing (⊙ / OK) it.
- 5 If you want to exit the OSD menu, move the joystick to ◀ until you exit.

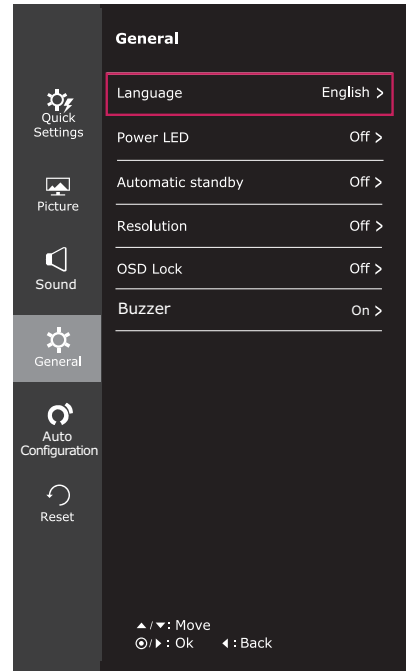


Each option is described below.

| Menu > Sound | Description | |
|---------------------------|---|---|
| Sound Out | Output the sound from external device. | |
| MaxxAudio | On | MaxxAudio® by Waves, recipient of a Technical GRAMMY Award® is a suite of studio-quality sound tools for a superior listening experience. |
| | Off | Disables the MaxxAudio function. |
| MaxxAudio Settings | The user can set the sound quality manually. | |
| | MaxxBass | Bass Enhancement. |
| | MaxxTreble | Treble Enhancement. |
| | MaxxDialog | Dialog Enhancement. |
| | Maxx3D | Enhances the three dimensional effect of the sound. |
| | Reset | Returns the sound quality to the default settings. |
| Midnight Mode | Lets you enjoy rich and full sound at a low volume. | |

-General

- 1 To view the **OSD menu**, press the **joystick button** at the bottom of the monitor and then enter the **Menu**.
- 2 Go to **General** by moving the joystick.
- 3 Configure the options following the instructions that appear in the bottom right corner.
- 4 To return to the upper menu or set other menu items, move the joystick to ◀ or pressing (⊙ / OK) it.
- 5 If you want to exit the OSD menu, move the joystick to ◀ until you exit.

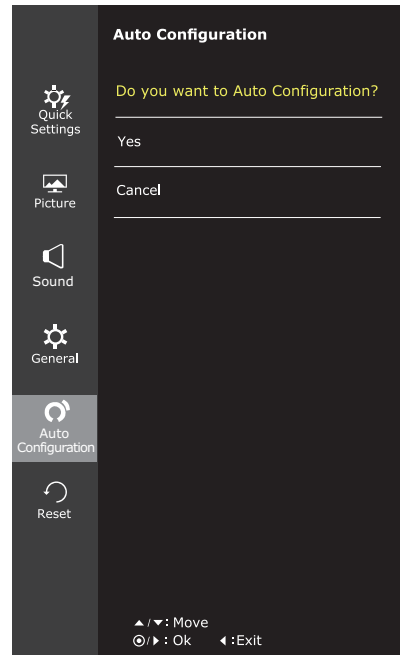


Each option is described below.

| Menu > General | Description |
|--------------------------|---|
| Language | To choose the language in which the control names are displayed. |
| Power LED | Turns the power indicator on the front side of the monitor on/off. |
| | On The power indicator is automatically turned on. |
| | Off The power indicator is turned off. |
| Automatic Standby | The monitor will automatically switch to standby mode after a certain period. |
| Resolution | User can set the desired resolution. This option is enabled only when the screen resolution on your computer is set to the following (D-SUB only). |
| | <div style="border: 1px solid black; padding: 5px;"> <p>NOTE</p> <p>The function is enabled only when the screen resolution on your computer is set to the following, except that the PC output wrong resolution.</p> </div> |
| | 1024x768, 1280x768, 1360x768, 1366x768, Off |
| | 1280x960, 1600x900, Off |
| 1440x900, 1600x900, Off | |
| OSD Lock | Prevents incorrect key input. |
| | On Key input is disabled. |
| | <div style="border: 1px solid black; padding: 5px;"> <p>NOTE</p> <p>All functions except for the OSD Lock mode and the Exit button for Brightness, Contrast, Volume, Input, and General are disabled.</p> </div> |
| | Off Key input is enabled. |
| Buzzer | This feature lets you set the sound generated from Buzzer when your monitor powers on to On or Off. |
| | On Enables your monitor's Buzzer. |
| | Off Disables your monitor's Buzzer. |

-Auto Configuration

- 1 To view the **OSD menu**, press the **joystick button** at the bottom of the monitor and then enter the **Menu**.
- 2 Go to **Auto Configuration** by moving the joystick.
- 3 Configure the options following the instructions that appear in the bottom right corner.
- 4 To return to the upper menu or set other menu items, move the joystick to ◀ or pressing (⊙ / OK) it.
- 5 If you want to exit the OSD menu, move the joystick to ◀ until you exit.



Each option is described below.

| Menu > Auto Configuration | Description |
|---|--|
| Do you want to Auto configuration? | |
| Yes | Operate the Auto configuration for optimal display in D-SUB. |
| Cancel | Cancel the select. |

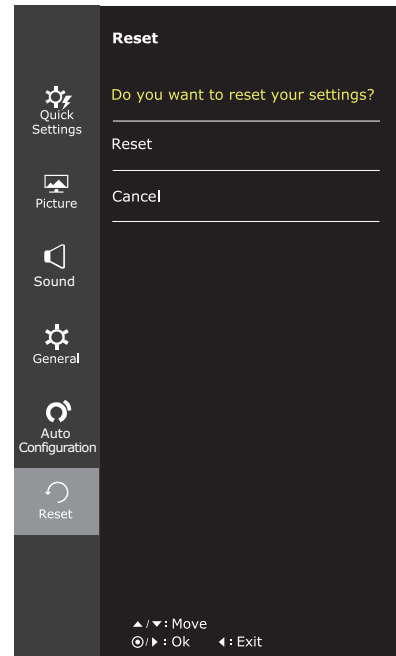


NOTE

- This function will be enable only in analog input.

-Reset

- 1 To view the **OSD menu**, press the **joystick button** at the bottom of the monitor and then enter the **Menu**.
- 2 Go to **Reset** by moving the joystick.
- 3 Configure the options following the instructions that appear in the bottom right corner.
- 4 To return to the upper menu or set other menu items, move the joystick to ◀ or pressing (⊙ / OK) it.
- 5 If you want to exit the OSD menu, move the joystick to ◀ until you exit.

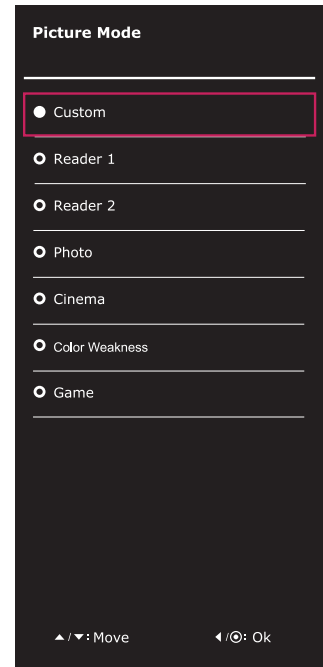


Each option is described below.

| Menu > Reset | Description |
|--|----------------------------------|
| Do you want to reset your settings? | |
| Reset | Returns to the default settings. |
| Cancel | Cancel the select. |

-Picture mode

- 1 Press the joystick button on the bottom of the monitor.
- 2 Go to **Picture mode** by moving the joystick button to ▲.
- 3 Configure the options following the instructions that appear in the bottom.



Each option is described below.

| Joystick Button > Picture Mode | Description | |
|-----------------------------------|----------------|---|
| Picture Mode | Custom | Allows the user to adjust each element. The color mode of the main menu can be adjusted. |
| | Reader 1 | It is a mode that the screen is adjusted to the best for the newspaper. If you want screen more bright, you can control brightness in Menu OSD. |
| | Reader 2 | It is a mode that the screen is adjusted to the best for the cartoon. If you want screen more bright, you can control brightness in Menu OSD. |
| | Photo | Optimizes the screen to view photos. |
| | Cinema | Optimizes the screen to improve the visual effects of a video. |
| | Color Weakness | This mode is for users who cannot distinguish between red and green. It enables users with color weakness to easily distinguish between the two colors. |
| | Game | Optimizes the screen for gameplay. |

TROUBLESHOOTING

Check the following before calling for service.

| No image appears | |
|---|--|
| Is the power cord of the display connected? | <ul style="list-style-type: none"> • Check and see if the power cord is connected properly to the power outlet. |
| Is the power indicator light on? | <ul style="list-style-type: none"> • Press the Power button. |
| Is the power indicator flickering? | <ul style="list-style-type: none"> • If the display is in power saving mode, try moving the mouse or pressing any key on the keyboard to bring up the screen. • Try to turn on the PC. |
| Do you see an "OUT OF RANGE" message on the screen? | <ul style="list-style-type: none"> • This message appears when the signal from the PC (video card) is out of horizontal or vertical frequency range of the display. See the 'Specifications' section of this manual and configure your display again. |
| Do you see a "NO SIGNAL" message on the screen? | <ul style="list-style-type: none"> • This is displayed when the signal cable between the PC and the monitor is missing or disconnected. Check the cable and reconnect it. |

| Can't you control some functions in OSD? | |
|--|--|
| Can't you select some menu in OSD? | <ul style="list-style-type: none"> • You can unlock the OSD controls at any time by entering the OSD lock menu and changing items to off. |

| Display image is incorrect | |
|--|---|
| Display Position is incorrect. | <ul style="list-style-type: none"> • Enter the Auto Configuration function and select the "Yes" item to automatically adjust your display image to the ideal setting. |
| On the screen background, vertical bars or stripes are visible. | <ul style="list-style-type: none"> • Enter the Auto Configuration function and select the "Yes" item to automatically adjust your display image to the ideal setting. |
| Any horizontal noise appearing in any image or characters are not clearly portrayed. | <ul style="list-style-type: none"> • Enter the Auto Configuration function and select the "Yes" item to automatically adjust your display image to the ideal setting. • Check Control Panel ► Display ► Settings and adjust the display to the recommended resolution or adjust the display image to the ideal setting. Set the color setting higher than 24 bits (true color). |

**CAUTION**

- Check **Control Panel ► Display ► Settings** and see if the frequency or the resolution were changed. If yes, readjust the video card to the recommend resolution.
- If the recommended resolution (optimal resolution) is not selected, letters may be blurred and the screen may be dimmed, truncated or biased. Make sure to select the recommend resolution.
- The setting method can differ by computer and O/S (Operation System), and resolution mentioned above may not be supported by the video card performance. In this case, please ask to the computer or the video card manufacturer.

Display image is incorrect

| | |
|---------------------------------------|---|
| The screen color is mono or abnormal. | <ul style="list-style-type: none"> • Check if the signal cable is properly connected and use a screwdriver to fasten if necessary. • Make sure the video card is properly inserted in the slot. • Set the color setting higher than 24 bits (true color) at Control Panel ► Settings. |
| The screen blinks. | <ul style="list-style-type: none"> • Check if the screen is set to interlace mode and if yes, change it to the recommend resolution. |

Do you see an "Unrecognized monitor, Plug&Play (VESA DDC) monitor found" message?

| | |
|--|--|
| Have you installed the display driver? | <ul style="list-style-type: none"> • Be sure to install the display driver from our web site: http://www.lg.com. • Make sure to check if the video card supports Plug&Play function. |
|--|--|

The screen is flickering.

| | |
|--|---|
| Did you select the recommended resolution? | <ul style="list-style-type: none"> • If the selected resolution is HDMI 1080i 60/50 Hz, the screen may be flickering. Change the resolution to the recommended resolution 1080P. |
|--|---|

SPECIFICATIONS

24MP88HM

| | | |
|--|--|--|
| Display | Screen Type | Flat Panel Active matrix-TFT LCD Anti-Glare coating |
| | Pixel Pitch | 0.2745 mm x 0.2745 mm (Pixel Pitch) |
| Resolution | Max | 1920 x 1080 @ 60 Hz |
| | Recommend | VESA 1920 x 1080 @ 60 Hz |
| Power Consumption | On Mode : 21.2 W Typ. (Outgoing condition) * Sleep Mode ≤ 0.3 W ** Off Mode ≤ 0.3 W | |
| Power Input | 19 V --- 1.6 A or 19 V --- 1.3 A | |
| AC-DC Adapter | Type ADS-40SG-19-3 19032G, manufactured by SHENZHEN HONOR ELECTRONIC or Type ADS-40FSG-19 19032GPG-1, manufactured by SHENZHEN HONOR ELECTRONIC or Type ADS-40FSG-19 19032GPBR-1, manufactured by SHENZHEN HONOR ELECTRONIC or Type ADS-40FSG-19 19032GPI-1, manufactured by SHENZHEN HONOR ELECTRONIC or Type ADS-40FSG-19 19032GPCU-1, manufactured by SHENZHEN HONOR ELECTRONIC or Type ADS-32FSG-19 19032EPCU-1L, manufactured by SHENZHEN HONOR ELECTRONIC or Type LCAP21A, manufactured by LIEN CHANG ELECTRONIC ENTERPRISE or Type LCAP26A-A, manufactured by LIEN CHANG ELECTRONIC ENTERPRISE or Type LCAP26A-E, manufactured by LIEN CHANG ELECTRONIC ENTERPRISE or Type LCAP26A-I, manufactured by LIEN CHANG ELECTRONIC ENTERPRISE or Type LCAP26A-B, manufactured by LIEN CHANG ELECTRONIC ENTERPRISE or Type LCAP51A, manufactured by LIEN CHANG ELECTRONIC ENTERPRISE or Type PA-1031-23, manufactured by Lite-On Technology Corporation | |
| | OUTPUT: 19 V --- 1.7 A | |
| | Type ADS-40SG-19-3 19025G, manufactured by SHENZHEN HONOR ELECTRONIC or Type ADS-40FSG-19 19025GPG-1, manufactured by SHENZHEN HONOR ELECTRONIC | |
| | OUTPUT: 19 V --- 1.3 A | |
| Speaker Wattage | 5 W + 5 W | |
| Dimensions (Width x Height x Depth) | With Stand | 541 mm x 414.5 mm x 186.2 mm |
| | Without Stand | 541 mm x 313.3 mm x 46.6 mm |
| Weight | 3.2 kg | |
| Tilt Range | -2° to 15° | |
| Environmental conditions | Operating Temperature | 0°C to 40°C |
| | Operating Humidity | ≤ 80% |
| | Storage Temperature | -20°C to 60°C |
| | Storage Humidity | ≤ 85% |

Product specifications shown above may be changed without prior notice due to upgrade of product functions.

The power consumption level can be different by operating condition and monitor setting.

* The On mode power consumption is measured with LGE test standard (Full White pattern , Maximum resolution).

** The monitor goes to the Sleep Mode in a couple of minutes(Max 5 minutes).

| | | | 24MP88HM |
|------------------------|-----------------------------|-------------------------------|----------|
| Sync Input | Horizontal Frequency | 30 kHz to 83 kHz (Automatic) | • |
| | Vertical Frequency | 56 Hz to 75 Hz (D-SUB) | • |
| | | 56 Hz to 75 Hz (HDMI) | • |
| | Input Form | Separate Sync. | • |
| Digital | | • | |
| Video Input | Signal Input | 15 pin D-SUB Connector | • |
| | | HDMI Connector | • |
| | Input Form | RGB Analog (0.7 Vp-p/ 75 ohm) | • |
| | | Digital | • |
| Plug & Play | DDC 2B(Analog) | | • |
| | DDC 2B(HDMI) | | • |

SPECIFICATIONS

24MP88HV 24MP88GM 24MP88TM

| | | |
|--|--|--|
| Display | Screen Type | Flat Panel Active matrix-TFT LCD Anti-Glare coating |
| | Pixel Pitch | 0.2745 mm x 0.2745 mm (Pixel Pitch) |
| Resolution | Max | 1920 x 1080 @ 60 Hz |
| | Recommend | VESA 1920 x 1080 @ 60 Hz |
| Power Consumption | On Mode : 21.2 W Typ. (Outgoing condition) * Sleep Mode ≤ 0.3 W ** Off Mode ≤ 0.3 W | |
| Power Input | 19 V --- 1.6 A or 19 V --- 1.3 A | |
| AC-DC Adapter | Type ADS-40SG-19-3 19032G, manufactured by SHENZHEN HONOR ELECTRONIC or Type ADS-40FSG-19 19032GPG-1, manufactured by SHENZHEN HONOR ELECTRONIC or Type ADS-40FSG-19 19032GPBR-1, manufactured by SHENZHEN HONOR ELECTRONIC or Type ADS-40FSG-19 19032GPI-1, manufactured by SHENZHEN HONOR ELECTRONIC or Type ADS-40FSG-19 19032GPCU-1, manufactured by SHENZHEN HONOR ELECTRONIC or Type ADS-32FSG-19 19032EPCU-1L, manufactured by SHENZHEN HONOR ELECTRONIC or Type LCAP21A, manufactured by LIEN CHANG ELECTRONIC ENTERPRISE or Type LCAP26A-A, manufactured by LIEN CHANG ELECTRONIC ENTERPRISE or Type LCAP26A-E, manufactured by LIEN CHANG ELECTRONIC ENTERPRISE or Type LCAP26A-I, manufactured by LIEN CHANG ELECTRONIC ENTERPRISE or Type LCAP26A-B, manufactured by LIEN CHANG ELECTRONIC ENTERPRISE or Type LCAP51A, manufactured by LIEN CHANG ELECTRONIC ENTERPRISE or Type PA-1031-23, manufactured by Lite-On Technology Corporation | |
| | OUTPUT: 19 V --- 1.7 A | |
| | Type ADS-40SG-19-3 19025G, manufactured by SHENZHEN HONOR ELECTRONIC or Type ADS-40FSG-19 19025GPG-1, manufactured by SHENZHEN HONOR ELECTRONIC | |
| | OUTPUT: 19 V --- 1.3 A | |
| Speaker Wattage | 5 W + 5 W | |
| Dimensions (Width x Height x Depth) | With Stand | 541 mm x 414.5 mm x 186.2 mm |
| | Without Stand | 541 mm x 313.3 mm x 46.6 mm |
| Weight | 3.3 kg | |
| Tilt Range | -2° to 15° | |
| Environmental conditions | Operating Temperature | 0°C to 40°C |
| | Operating Humidity | ≤ 80% |
| | Storage Temperature | -20°C to 60°C |
| | Storage Humidity | ≤ 85% |

Product specifications shown above may be changed without prior notice due to upgrade of product functions.

The power consumption level can be different by operating condition and monitor setting.

* The On mode power consumption is measured with LGE test standard (Full White pattern , Maximum resolution).

** The monitor goes to the Sleep Mode in a couple of minutes(Max 5 minutes).

| | | | 24MP88HV | 24MP88GM | 24MP88TM |
|------------------------|-----------------------------|-------------------------------|----------|----------|----------|
| Sync Input | Horizontal Frequency | 30 kHz to 83 kHz (Automatic) | • | • | • |
| | Vertical Frequency | 56 Hz to 75 Hz (D-SUB) | • | • | • |
| | | 56 Hz to 75 Hz (HDMI) | • | • | • |
| | Input Form | Separate Sync. | • | • | • |
| Digital | | • | • | • | |
| Video Input | Signal Input | 15 pin D-SUB Connector | • | • | • |
| | | HDMI Connector | • | • | • |
| | Input Form | RGB Analog (0.7 Vp-p/ 75 ohm) | • | • | • |
| | | Digital | • | • | • |
| Plug & Play | DDC 2B(Analog) | | • | • | • |
| | DDC 2B(HDMI) | | • | • | • |

Preset Modes (Resolution)

D-SUB/HDMI PC Timing

| Display Modes (Resolution) | Horizontal Frequency(kHz) | Vertical Frequency(Hz) | Polarity(H/V) | |
|----------------------------|---------------------------|------------------------|---------------|----------------|
| 720 x 400 | 31.468 | 70 | -/+ | |
| 640 x 480 | 31.469 | 60 | -/- | |
| 640 x 480 | 37.500 | 75 | -/- | |
| 800 x 600 | 37.879 | 60 | +/+ | |
| 800 x 600 | 46.875 | 75 | +/+ | |
| 1024 x 768 | 48.363 | 60 | -/- | |
| 1024 x 768 | 60.023 | 75 | +/+ | |
| 1152 x 864 | 67.500 | 75 | +/+ | |
| 1280 x 1024 | 63.981 | 60 | +/+ | |
| 1280 x 1024 | 79.976 | 75 | +/+ | |
| 1680 x 1050 | 65.290 | 60 | -/+ | |
| 1920 x 1080 | 67.500 | 60 | +/+ | Recommend Mode |

HDMI Timing(Video)

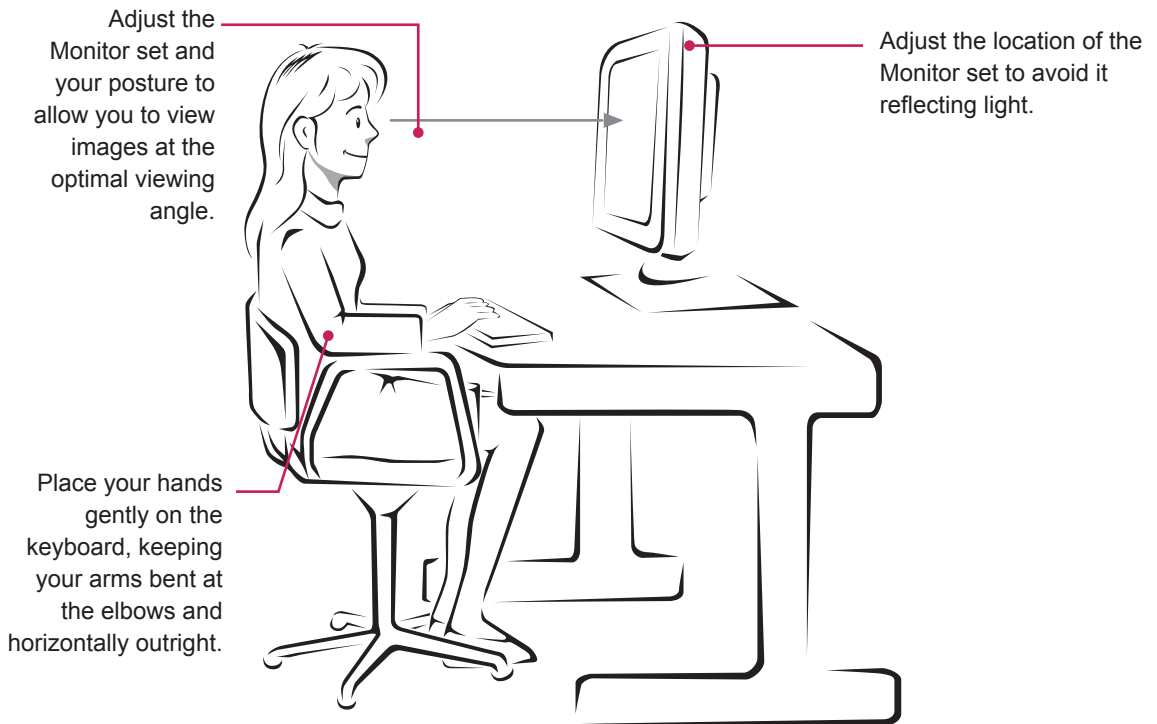
| Factory support mode (Preset Mode) | Horizontal Frequency(kHz) | Vertical Frequency(Hz) | HDMI |
|------------------------------------|---------------------------|------------------------|---------------------|
| 480P | 31.50 | 60 | O |
| 576P | 31.25 | 50 | O |
| 720P | 37.50 | 50 | O |
| 720P | 45.00 | 60 | O |
| 1080P | 56.25 | 50 | O |
| 1080P | 67.50 | 60 | O Recommend Mode |

Indicator

| Mode | LED Color |
|------------|----------------|
| On Mode | White |
| Sleep Mode | Blinking White |
| Off Mode | Off |

PROPER POSTURE

Proper posture for using the Monitor set.





Make sure to read the Safety Precautions before using the product.

The model and serial number of the product are located on the back and on one side of the product.

Record them below in case you ever need service.

MODEL _____

SERIAL _____